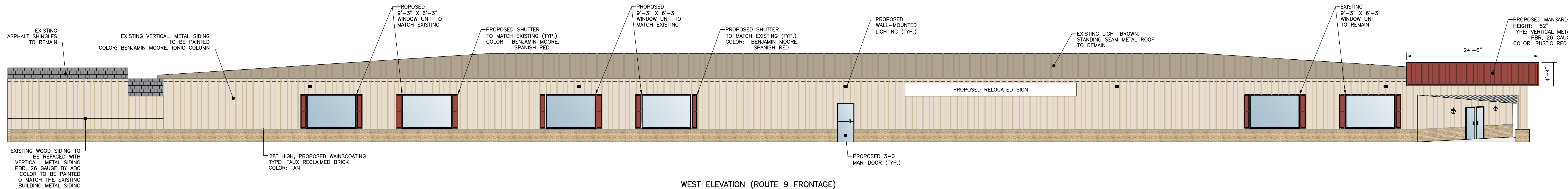
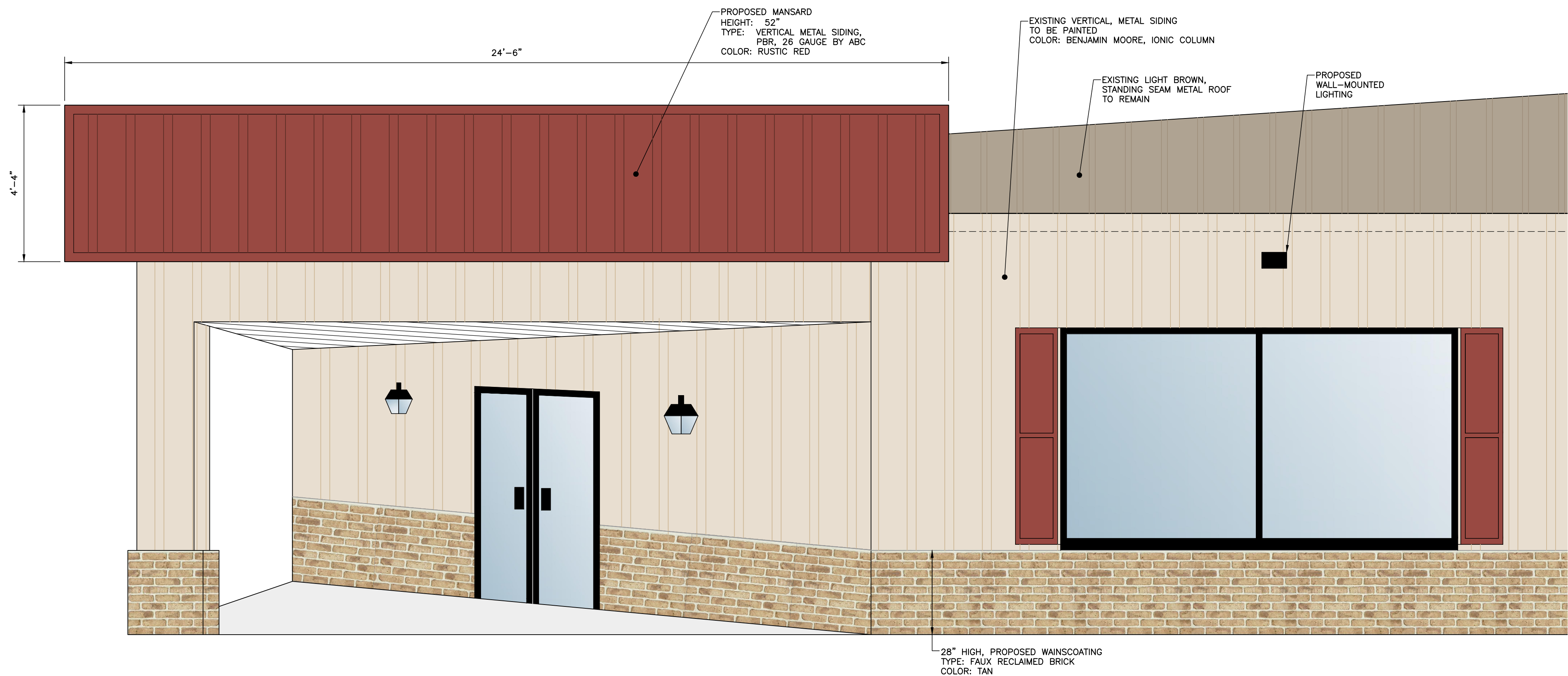


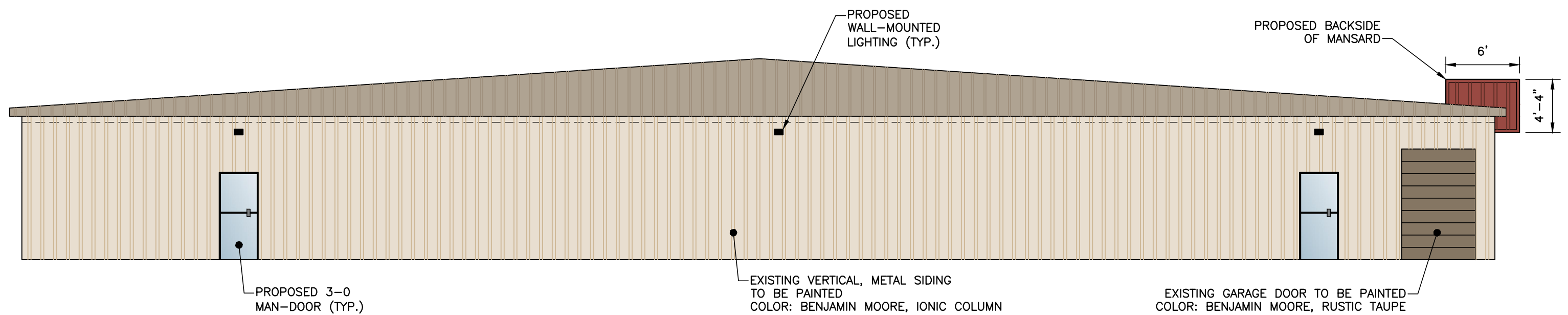
EAST ELEVATION (REAR)  
SCALE: 1/8"=1'



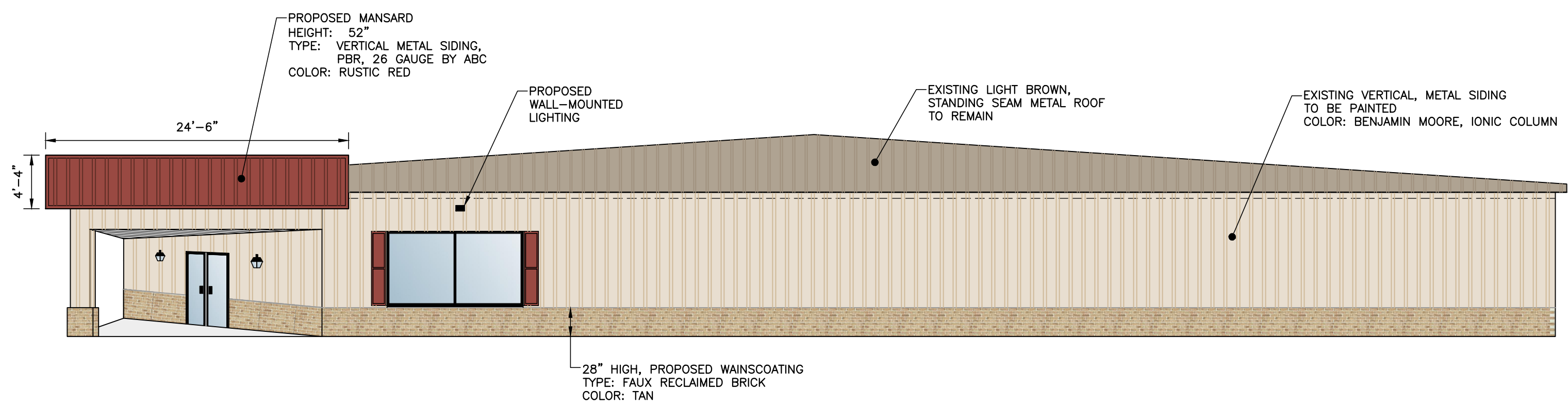
WEST ELEVATION (ROUTE 9 FRONTAGE)  
SCALE: 1/8"=1'



SOUTH FRONT CORNER ENLARGEMENT  
SCALE: 1/2"=1'

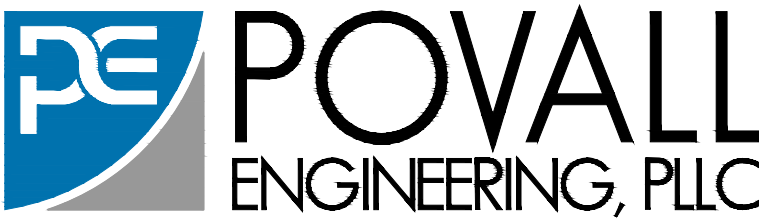


NORTH ELEVATION (NO ROAD FACING)  
SCALE: 1/8"=1'



SOUTH ELEVATION (OLD ROUTE 9 FRONTAGE)  
SCALE: 1/8"=1'

REVISIONS	
DATE:	DESCRIPTION:



WILLIAM H. POVALL III, P.E.  
N.Y.S.P.E. LICENSE #075020  
3 NANCY COURT, SUITE 4  
WAPPINGERS FALLS, NY 12590  
TEL.: (845) 897-9205  
FAX: (845) 897-0042

TOWN OF WAPPINGER	STAGE DOOR BUILDING	JOB #: 1320D
	ELEVATIONS	DATE: 12-02-21
		SCALE: AS SHOWN
		E-1
	DUTCHESS COUNTY, NEW YORK	SHEET 1 OF 1