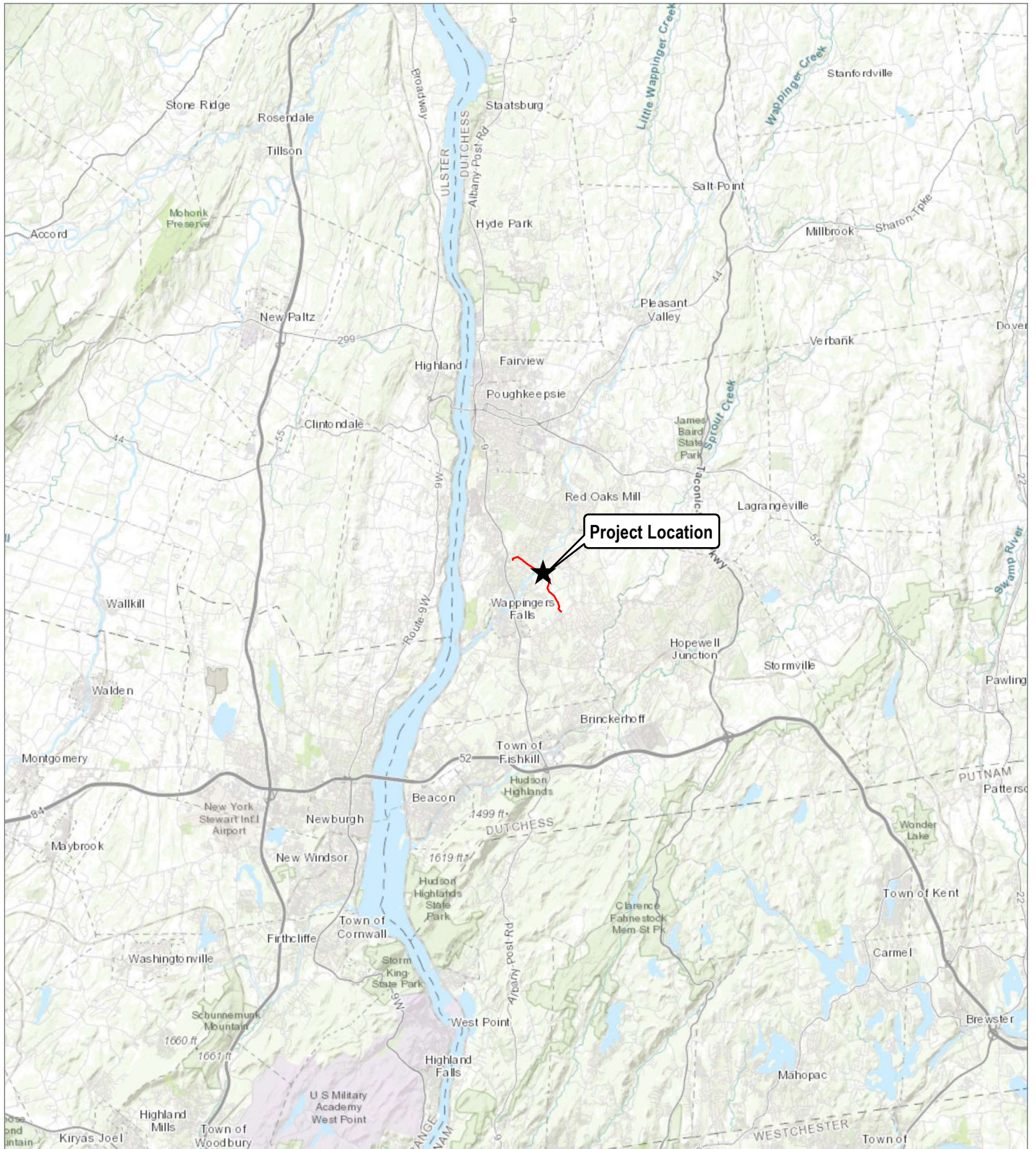


**Figure 1. Regional Project Location**



## 69kV KM Electric Transmission Line Replacement Project

Towns of Wappinger and Poughkeepsie, Dutchess County, New York

— Transmission Line



0 1 2 4  
Miles

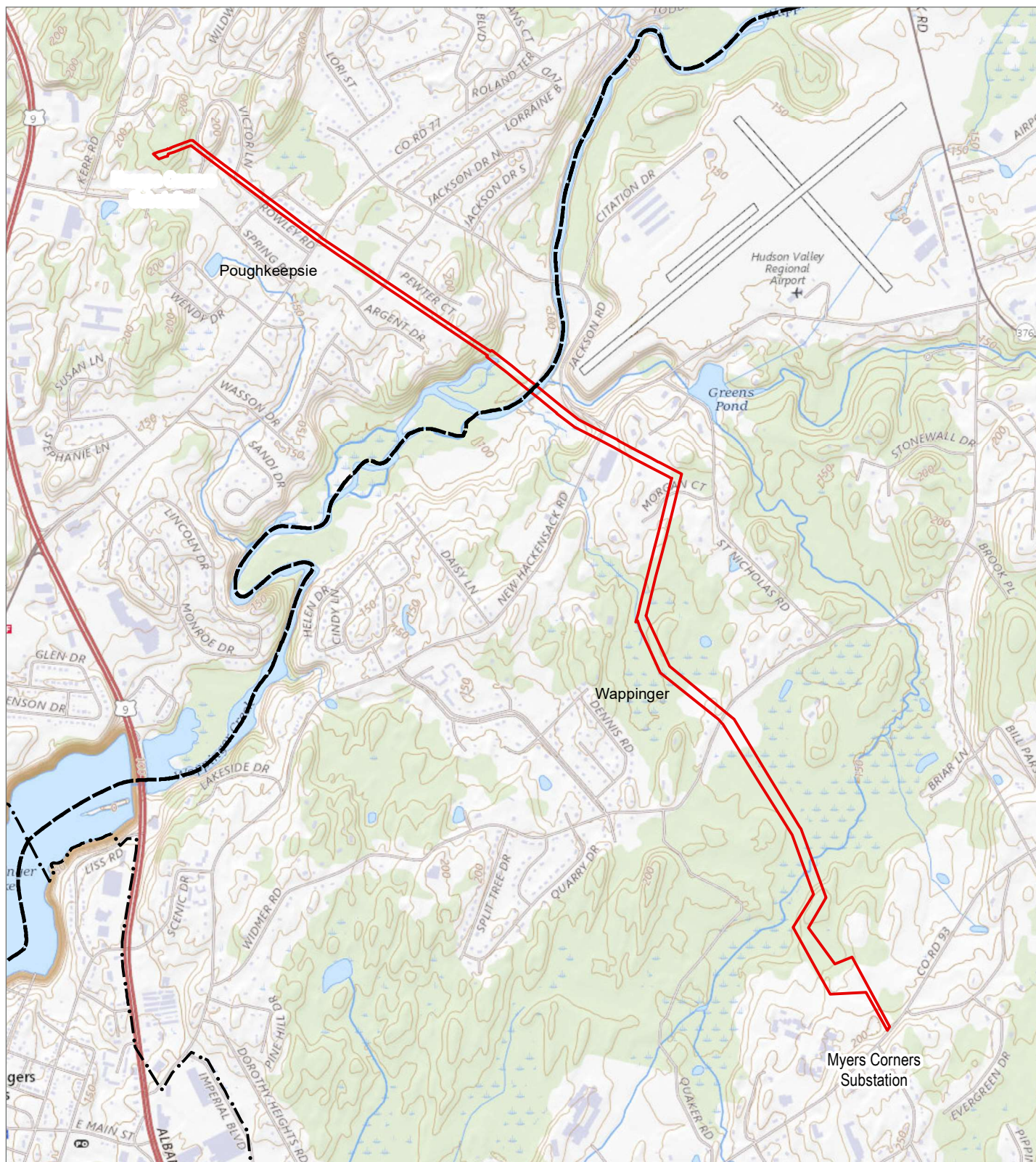
FEAF

EDR

Prepared November 9, 2021  
Basemap: ESRI ArcGIS Online "World Topographic Map" map service



Figure 2. Project Site Location and Topography



## 69kV KM Electric Transmission Line Replacement Project

Towns of Wappinger and Poughkeepsie, Dutchess County, New York

-  Municipal Boundary
-  Project Site - ROW



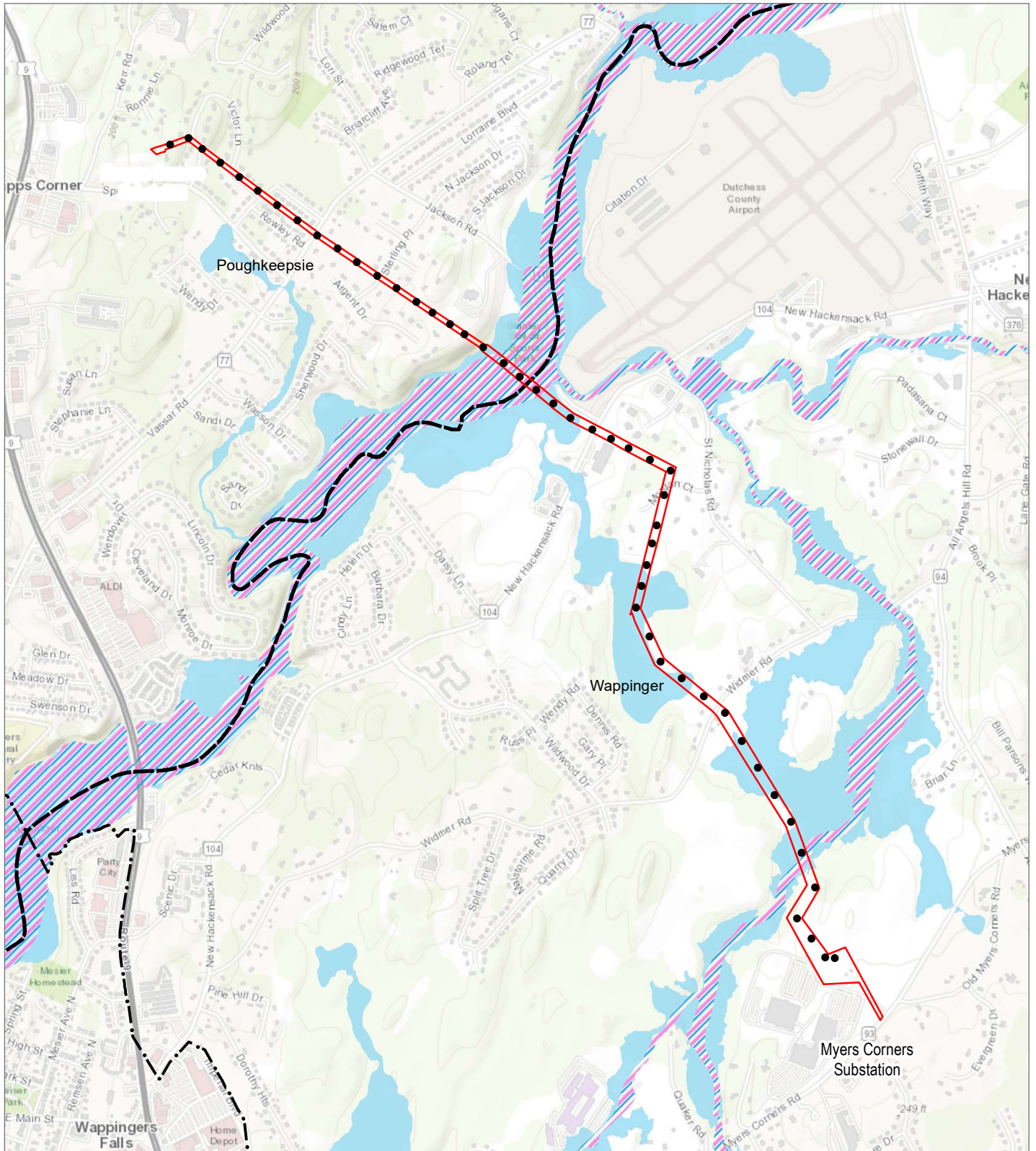
0 500 1,000 2,000  
Feet

FEAF

EDR



**Figure 3. FEMA Flood Zones**



## 69kV KM Electric Transmission Line Replacement Project

Towns of Wappinger and Poughkeepsie, Dutchess County, New York

FEAF

EDR

- KM Line Replacement Poles
- Municipal Boundary
- ▬ KM Line - ROW
- 1% Annual Flood Chance
- ▨ Regulatory Floodway

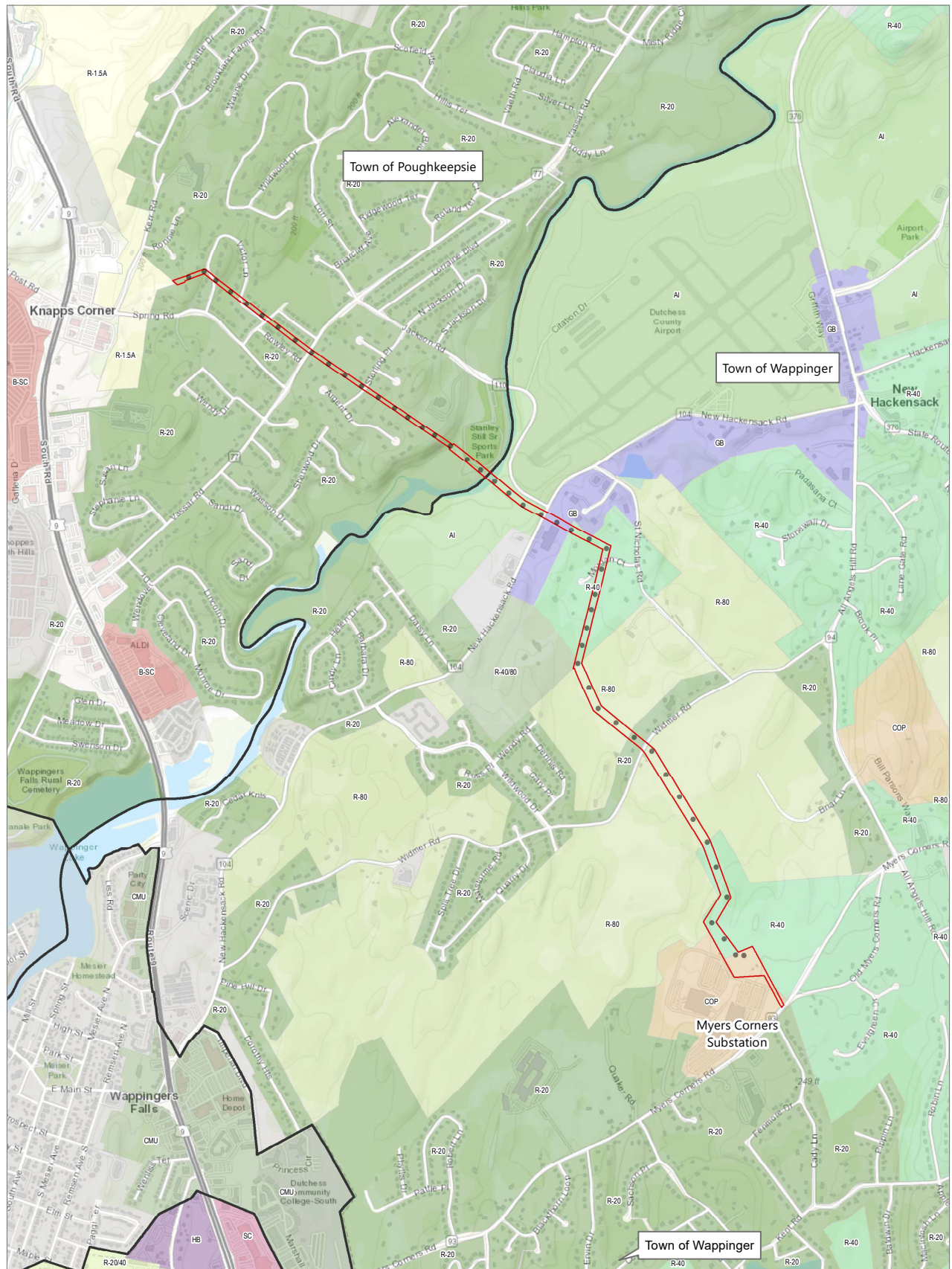


0 500 1,000 2,000  
Feet

Prepared November 9, 2021  
Basemap: ESRI ArcGIS Online "World Topographic Map" map service



**Figure 4. Zoning Map**



# **69 kV KM Electric Transmission Line Replacement Project**

Towns of Wappinger and Poughkeepsie  
Dutchess County, New York

**FEAF  
EDR**

Town of Wappinger and Poughkeepsie  
Zoning Districts

- R-20, Residence Single Family
- R-15A, Residence Single Family
- B-SC, Shopping Center Business
- Village of Wappingers Falls Zoning  
Districts
- CMU, Commercial Mixed Use

Town of Wappinger Zoning Districts

- SC, Shopping Center District
- COP, Conservation Office Park District
- GB, General Business District
- HB, Highway Business District
- Zoning Districts Outside of ROW
- Airport Industry District

- R-40, One Family Residence District
- R-40/80, One Family Residence District
- R-80, One Family Residence District
- R-20/40, One Family Residence District
- KM Line Pole
- Project Site - ROW
- Municipal Boundary

Feet  
0 500 1,000 2,000



Prepared November 9, 2021  
Basemap: ESRI ArcGIS Online "World Topographic Map" map service





### Existing Conditions 1

Town of Poughkeepsie, Stanley Still Park. Note the bending pole and various pole types.



### Existing Conditions 2

Town of Poughkeepsie, Morgan Court. Note the clutter of electrical infrastructure, multiple poles, etc.

## 69 kV KM Electric Transmission Line Replacement Project

Towns of Poughkeepsie and Wappinger, Dutchess County, NY

EAf





### Existing Conditions 3

Towns of Wappinger and Poughkeepsie at Wappinger Creek. Note aged and bending pole.



### Existing Conditions 4

Town of Poughkeepsie, Malmros Terrace. Note aged and bending pole.

## 69 kV KM Electric Transmission Line Replacement Project

Towns of Poughkeepsie and Wappinger, Dutchess County, NY

EAf



### Existing Conditions 5

Town of Poughkeepsie, Rowley Road. Note the presence of adjacent distribution line, bending pole, and various types



### Existing Conditions 6

Town of Poughkeepsie, Victor Lane. Note the visual clutter and various electrical infrastructure.



## 69 kV KM Electric Transmission Line Replacement Project

Towns of Poughkeepsie and Wappinger, Dutchess County, NY

EAf

EDR