

- NOTE:
1. PROVIDE 24" CONCRETE FOUNDATION REVEAL FOR ALL FIXTURES WITHIN PARKING AREAS. ALL OTHER AREAS SHALL BE INSTALLED FLUSH.
 2. CONCRETE SHALL HAVE A 28 DAY COMPRESSIVE STRENGTH OF 3,500 PSI, WITH AIR-ENTAINMENT OF 5-7%.
 3. COLOR OF LUMINAIRE SHALL MATCH COLOR OF POLE.

LIGHT POLE BASE DETAIL

L400 Series

L401/L402 Models LED Street and Area Light

The L400 Series captures the benefits of the latest in LED technology into a high performance, high efficiency, long-life luminaire. The outstanding photometric performance results in sites with excellent uniformity, greater pole spacing and lower power density. The L400 Series is the better alternative for traditional street and area lighting with quick payback and improved performance.

Applications: Roadway, parking lots, walkways and general area spaces.

Warranty:

- Ten year limited warranty.

L400 Series

L401/L402 Models LED Street and Area Light

Performance Data

Lumen Output:

Lumen values are from photometric tests performed in accordance with IESNA LM-79-08. Data are considered to be representative of the configurations shown, within the tolerances allowed by Lighting Facts. Actual performance may differ as a result of end user environment and application. Actual wattage may differ by +/- 10%. Contact factory for performance data on any configurations not shown here.

Model	LEDs	LED Current	Power	Beam Type	10K (1000K-2000K)				40K (4000K-5000K)			
					Lumens	B	U	G	Lumens	B	U	G
L401L	10	0.7 A	25 W	10°	2000	1.0	1.1	1.1	2400	1.0	1.1	1.1
				15°	2500	1.1	1.2	1.2	2800	1.1	1.2	1.2
				20°	3000	1.2	1.3	1.3	3200	1.2	1.3	1.3
				25°	3500	1.3	1.4	1.4	3600	1.3	1.4	1.4
L402L	20	0.7 A	50 W	10°	4000	2.0	2.2	2.2	4800	2.0	2.2	2.2
				15°	5000	2.2	2.4	2.4	6000	2.2	2.4	2.4
				20°	6000	2.4	2.6	2.6	7200	2.4	2.6	2.6
				25°	7000	2.6	2.8	2.8	8400	2.6	2.8	2.8

Electrical Data:

Model	LED Type	Power	Beam Type	Operating Temp. (°C)	Operating Temp. (°F)
L401L	10°	25W	10°	10°C	50°F
L401L	15°	25W	15°	20°C	68°F
L401L	20°	25W	20°	25°C	77°F
L401L	25°	25W	25°	30°C	86°F
L401L	30°	25W	30°	35°C	95°F

Lumen Ambient Temperature (LAT) Multipliers:

°C	30°F	1.00
10°C	50°F	1.01
20°C	68°F	1.01
25°C	77°F	1.01
30°C	86°F	1.01
35°C	95°F	0.99

Certifications

- cULus Listed
- Suitable for wet locations
- Certified to ANSI C136.31-2007, IC vision standard
- Surge suppression protection tested in accordance with IEEE/ANSI C82.41.2
- Precision resistor spot assembly tested to 100%
- Meets FCC Part 15 standards for unlicensed use and adjacent channels
- RoHS compliant. Consult factory for additional details.

Luminaire Lumen Maintenance Factors (LMF)

Date reference the enhanced performance capabilities for the photometric tests at 40°C ambient, based on 10,000 hours of life being tested per IESNA LM-79-08 and projected per IESNA TM-21-11.

To calculate LMF, use the lumen maintenance factor that corresponds to the desired luminaire life and temperature.

Luminaire Life (hrs)	LMF
10,000	0.90
20,000	0.80
30,000	0.70
40,000	0.60
50,000	0.50

Ordering Information

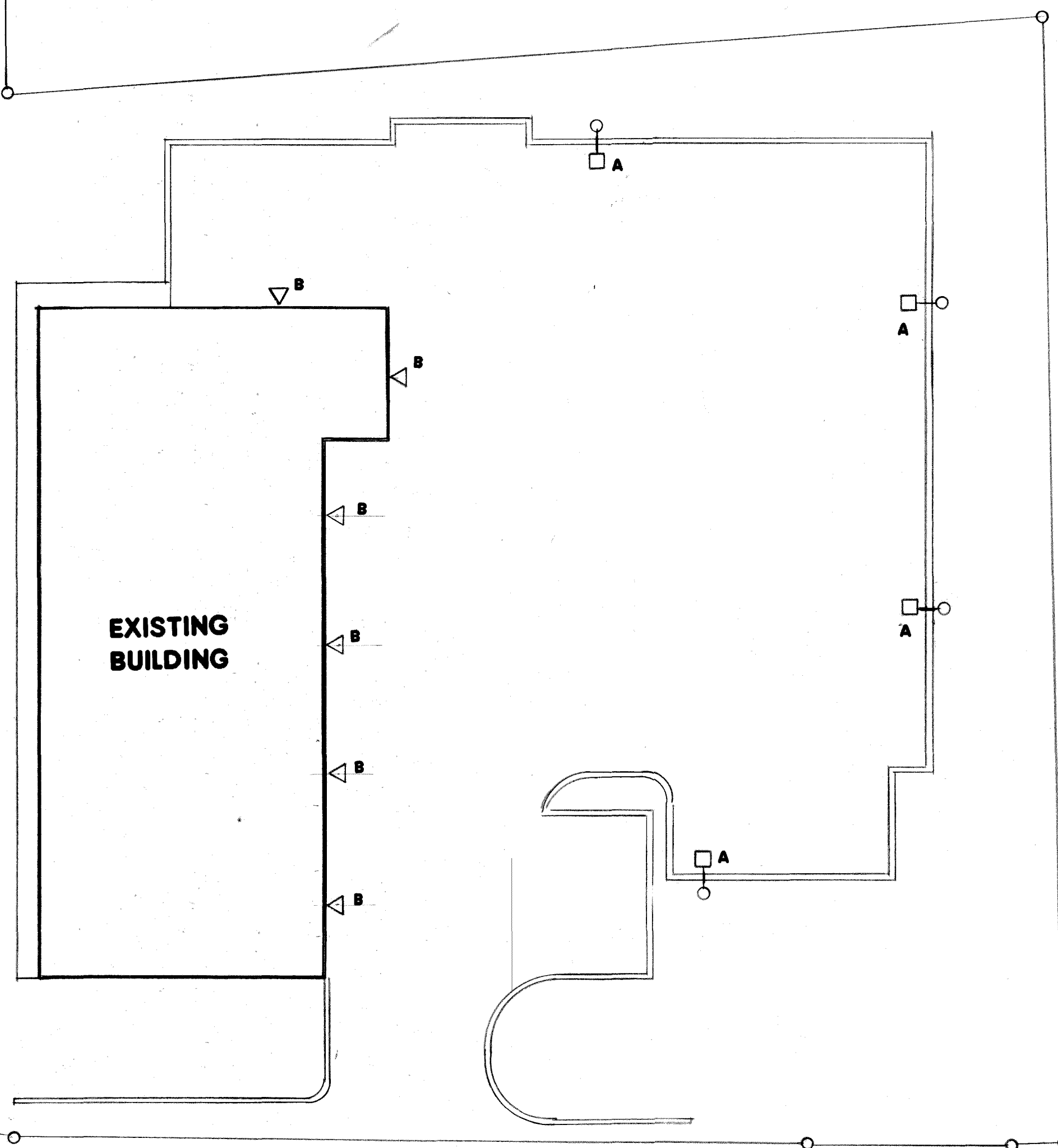
Model	Options	Power	Color	Distribution	Control Options	Finish	Input Voltage
L401	No Photocontrol*	25W	40K-5000K*	T2 Type 2 T3 Type 3 T5 Type 5	10-0-10V Dimming*	GR Gray*	M 120-277VAC

*Standard Configuration

Standard Features:

- Standard 7-Phi Photocell (Recapable per ANSI C136.31)
- Stand-alone 10kV/10kA Surge Suppression Device (consult factory for 20kV/20kA option)
- Terminal block accepts 14-6 AWG conductors (Line, Neutral, Ground) (consult factory for 600V, 85A, 14-24WG terminal block)
- Two Bolt Mounting accommodates 1" x 1/2" to 2" NPS horizontal tension (pre-configured for 2" NPS)
- Integral Tilt-adjustment Steps 15°
- Bird-guard
- Tool-less Entry
- Input Voltage: 120-277V, 50/60Hz
- Power Factor: > 0.9 at full load and Total Harmonic Distortion: < 20% at full load
- Ambient Operating Temperatures -40°C to +50°C

POLE MOUNTED LIGHT FIXTURE



HOWARD LIGHTING PRODUCTS

Medium Wall Pack - LED

Features:

- Construction
 - o One-piece die-cast aluminum housing and hinged, removable die-cast aluminum door
 - o One-piece silicone gasket seals the optical chamber
 - o Housing has a textured bronze finish
 - o Borosilicate molded glass lens
 - o 1/2" conduit access, sides, top, or rear knockouts
- Photocell adjustable and UL listed for wet locations
- LED driver and electrical components are mounted to the die-cast housing for optimal heat sinking and operating efficiency
- UL recognized integral LED electronic driver is Class 2 rated for 120-277V, 50/60Hz
- High output LEDs provide 80+ CRI in 5000 K CCT
- The LED system delivers, on average, 70% of lumen maintenance (L70) at 60,000 hours
- Suitable for ambient temperature up to 55°C (131°F)
- 5 Year warranty

Ordering Information

Series	Color	Configuration	Factory Installed Options (Y)
MWP	50	40R-LED-MV	
MWP	50	28R-LED-MV	(blank): No PFC
MWP	50	40R-LED-MV	4,660 Lumens, 22W
MWP	50	55R-LED-MV	4,660 Lumens, 41W
MWP	50	55R-LED-MV	5,990 Lumens, 51W

Note: Order with (M) for size 24 compliance in CA

Cross Reference Chart

Comparable to HID	LED Replacement	Energy Savings		
Source	Input Watts	Model #	Input Watts	Percentage
150W	185	MWP-5055R-LED-MV	51	72%
100W	129	MWP-5040R-LED-MV	41	68%
70W	91	MWP-5028R-LED-MV	22	76%

120V on Quad Tap Ballast

Accessories (sold separately)

Catalog #	Description
LCPCM	LED compatible external stem & swivel mount electronic photocell

Please use LED compatible electronic components to maintain warranty.

Dimensions

Classic look - modern performance

5 YEAR WARRANTY

DLG lighting facts LISTED

Applications

Ideal for parking facilities, entry ways, perimeter/pathway lighting for underpasses.

Dimensions

7.13 in.

9.20 in.

14.2 in.

Proudly Assembled IN THE USA*

Online Resources

QR code linking to online resources.

Specifications subject to change without notice.

Howard Lighting Products | 190 Eastview Drive | Laurel, MD 20646
(301) 800-9566 | (301) 422-0031 | Fax: (301) 422-1652
www.howard-lightingproducts.com

Page 1 of 2
Rev: 8/24/2018

HOWARD LIGHTING PRODUCTS

Medium Wall Pack - LED

Project:

Catalog#:

Approved by:

Date:

Classic look - modern performance

5 YEAR WARRANTY

DLG lighting facts LISTED

Applications

Ideal for parking facilities, entry ways, perimeter/pathway lighting for underpasses.

Dimensions

7.13 in.

9.20 in.

14.2 in.

Proudly Assembled IN THE USA*

Online Resources

QR code linking to online resources.

Specifications subject to change without notice.

Howard Lighting Products | 190 Eastview Drive | Laurel, MD 20646
(301) 800-9566 | (301) 422-0031 | Fax: (301) 422-1652
www.howard-lightingproducts.com

Page 1 of 2
Rev: 8/24/2018

WALL MOUNTED LIGHT FIXTURE

Lighting Notes

1. All lighting shown on this plan shall be directed and/or shielded so as to preclude objectionable glare from being observable from adjoining streets and properties.

Luminaire Schedule

Mark	Item	Description	Qty.
A	Pole Mount	Howard Lighting L401L-25W-40K-T4 120 V, 1 p, 2 w	4
B	Wall Mount	Howard Lighting MWP - 5028-LED, MV 120 V, 1 p, 2 w	6

REVISIONS	BY

ALFRED A. CAPELLI JR., AIA
ARCHITECT
 1136 ROUTE 9 WAPPINGERS FALLS, N.Y. 12590
 Phone: (845) 632-6500
 acapell2102@aol.com

PROPOSED CONTRACTOR STORAGE BUILDING
33 MIDDLEBUSH LLC
 33 MIDDLEBUSH ROAD TOWN OF WAPPINGERS, NY

LIGHTING PLAN

DATE	AUG. 1, 2019
SCALE	1" = 20'
DRAWN	AC
JOB	16-034
SHEET	S-6
OF	SHEETS