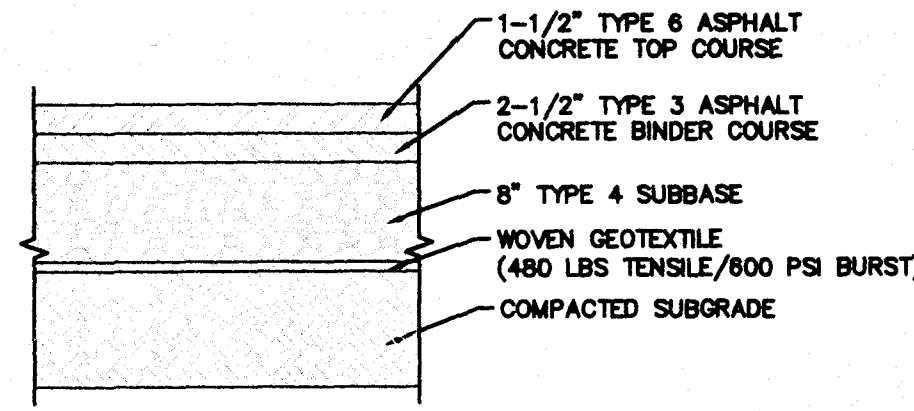


NOTES:

1. MATERIALS AND METHODS OF CONSTRUCTION SHALL BE IN CONFORMANCE WITH THE NEW YORK STATE DEPARTMENT OF TRANSPORTATION (NYSDOT) STANDARD SPECIFICATIONS FOR CONSTRUCTION AND MATERIALS, DATED JANUARY 2, 2008, AND ALL ADDENDA THERETO; THE ONLY EXCEPTION BEING THAT THE WORK OF THIS CONTRACT SHALL BE MEASURED IN ENGLISH UNITS.
2. SUBBASE MATERIAL SHALL CONFORM WITH SECTION 304 - SUBBASE COURSE OF THE ABOVE REFERENCED NYSDOT STANDARD SPECIFICATIONS AND THE TYPE CALLED OUT IN THESE DRAWINGS.
3. TACK COAT WHEN SPECIFIED OR CALLED OUT IN THESE DRAWINGS OR REQUIRED BY THE REFERENCED SPECIFICATIONS SHALL CONFORM WITH SECTION 407-TACK COAT OF THE ABOVE REFERENCED NYSDOT STANDARD SPECIFICATIONS.
4. WHERE IT IS NECESSARY TO PLACE FILL FOR PURPOSES OF BRINGING THE SUBGRADE ELEVATION UP TO A SPECIFIED GRADE, THE FILL MATERIAL PLACED SHALL BE IN CONFORMANCE WITH SECTION 203-EXCAVATION AND EMBANKMENT OF THE ABOVE REFERENCED NYSDOT STANDARD SPECIFICATIONS.

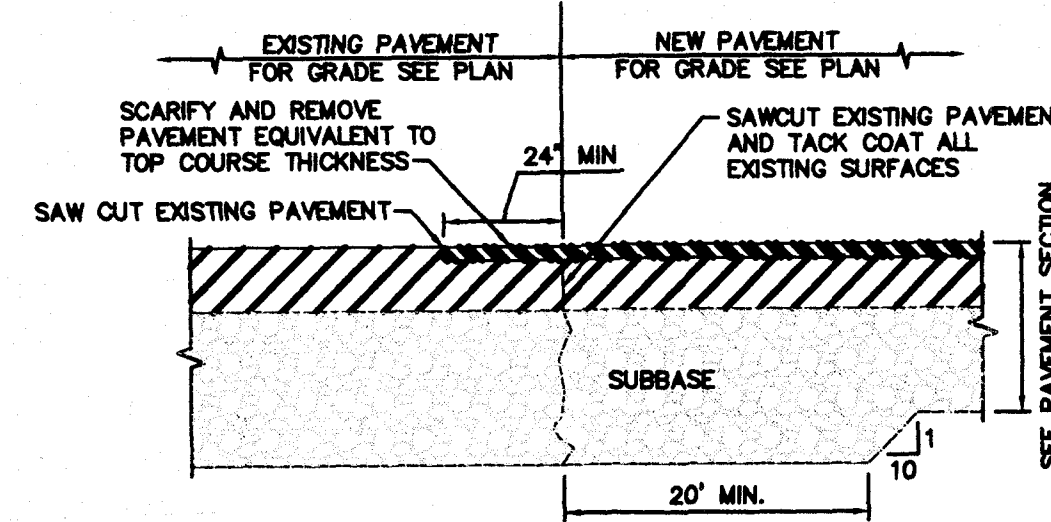
1 PAVING DETAIL @ SITE ENTRANCE
FOR 20 FT. ON TO THE PROPERTY FROM THE PROPERTY LINE



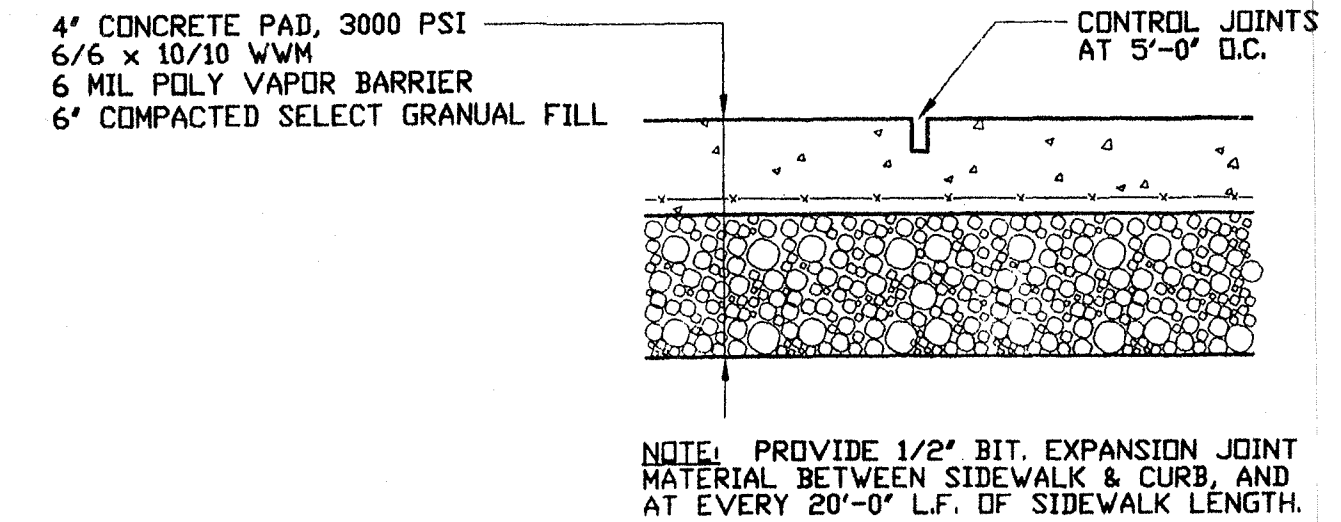
NOTES:

1. MATERIALS AND METHODS OF CONSTRUCTION SHALL BE IN CONFORMANCE WITH THE NEW YORK STATE DEPARTMENT OF TRANSPORTATION (NYSDOT) STANDARD SPECIFICATIONS FOR CONSTRUCTION AND MATERIALS, DATED JANUARY 2, 2008, AND ALL ADDENDA THERETO; THE ONLY EXCEPTION BEING THAT THE WORK OF THIS CONTRACT SHALL BE MEASURED IN ENGLISH UNITS.
2. SUBBASE MATERIAL SHALL CONFORM WITH SECTION 304 - SUBBASE COURSE OF THE ABOVE REFERENCED NYSDOT STANDARD SPECIFICATIONS AND THE TYPE CALLED OUT IN THESE DRAWINGS.
3. TACK COAT WHEN SPECIFIED OR CALLED OUT IN THESE DRAWINGS OR REQUIRED BY THE REFERENCED SPECIFICATIONS SHALL CONFORM WITH SECTION 407-TACK COAT OF THE ABOVE REFERENCED NYSDOT STANDARD SPECIFICATIONS.
4. WHERE IT IS NECESSARY TO PLACE FILL FOR PURPOSES OF BRINGING THE SUBGRADE ELEVATION UP TO A SPECIFIED GRADE, THE FILL MATERIAL PLACED SHALL BE IN CONFORMANCE WITH SECTION 203-EXCAVATION AND EMBANKMENT OF THE ABOVE REFERENCED NYSDOT STANDARD SPECIFICATIONS.

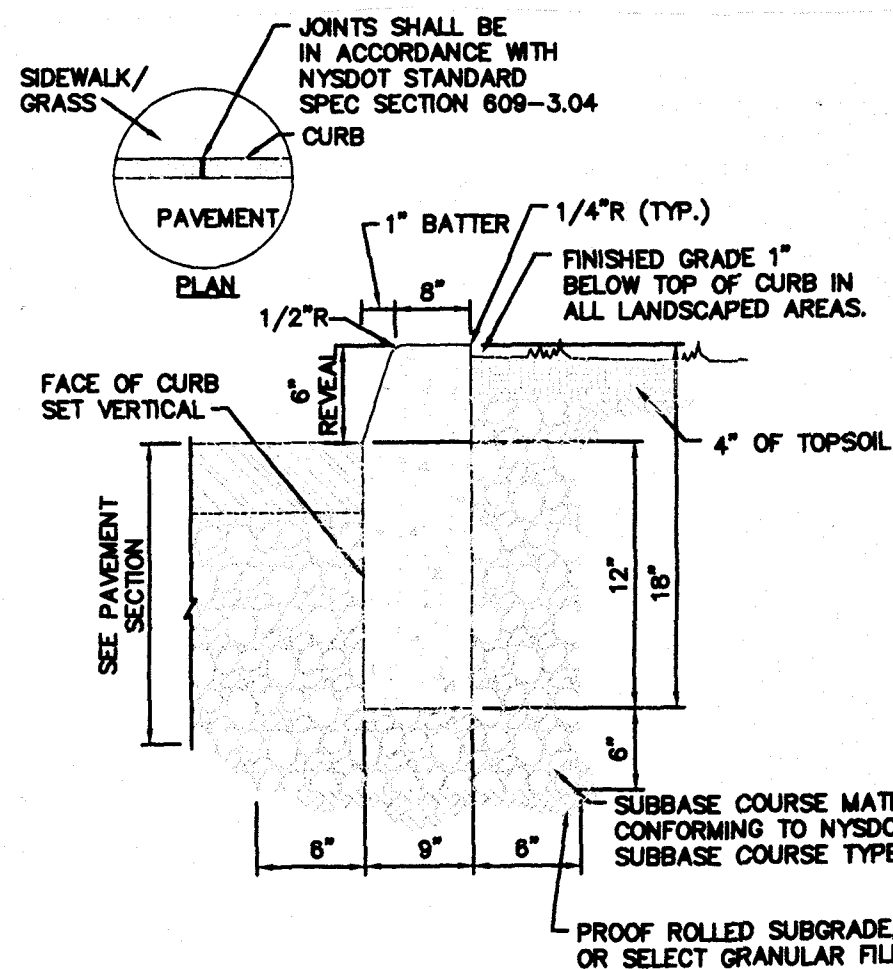
2 PAVING DETAIL @ LOT INTERIOR



3 PAVEMENT TRANSITION @ SITE ENTRANCE



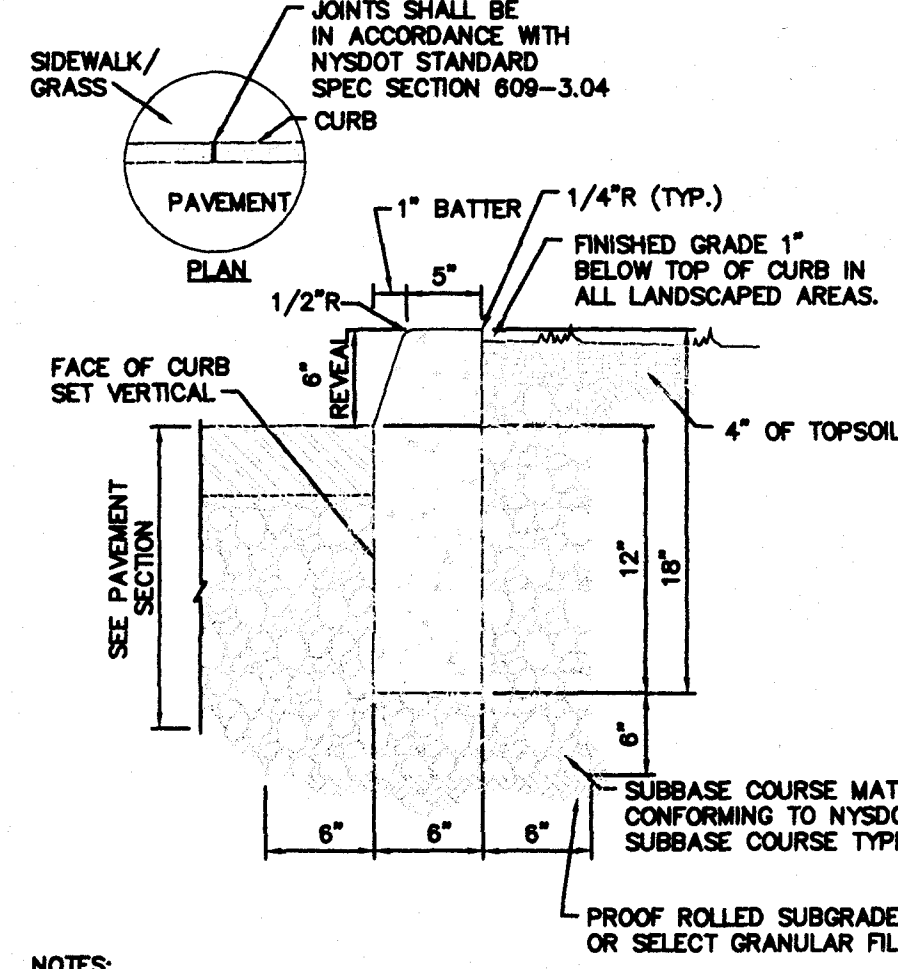
4 CONCRETE SIDEWALK DETAIL



NOTES:

1. CONCRETE CURB SHALL BE IN ACCORDANCE WITH NYSDOT STANDARD SPECIFICATION SECTION 609.
2. PRECAST CONCRETE CURB MAY BE SUBSTITUTED WHEN ALTERNATE CONSTRUCTION DETAILS ARE SUBMITTED BY THE CONTRACTOR AND APPROVED BY THE ENGINEER.

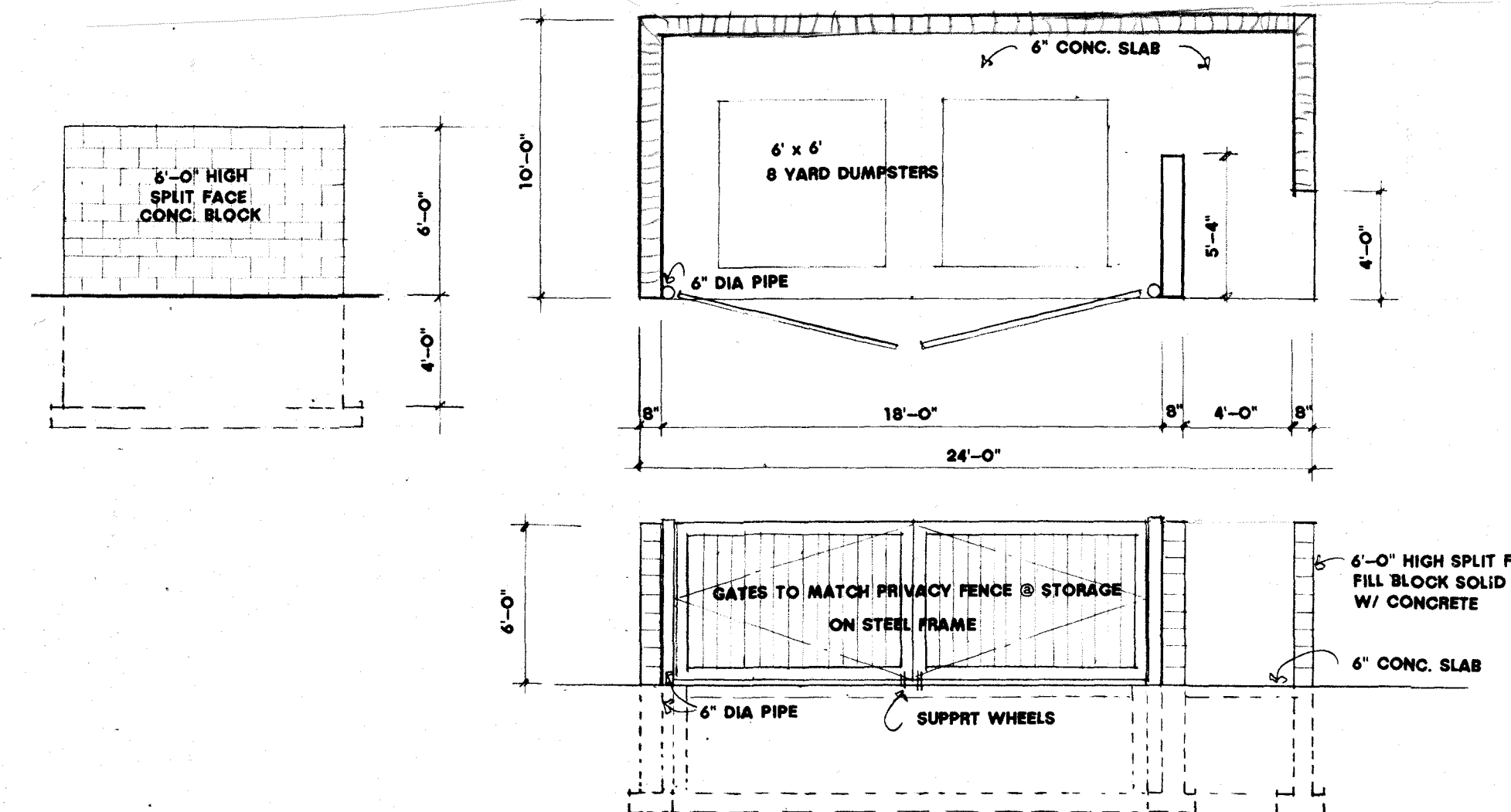
5 CONCRETE CURB @ SITE ENTRY



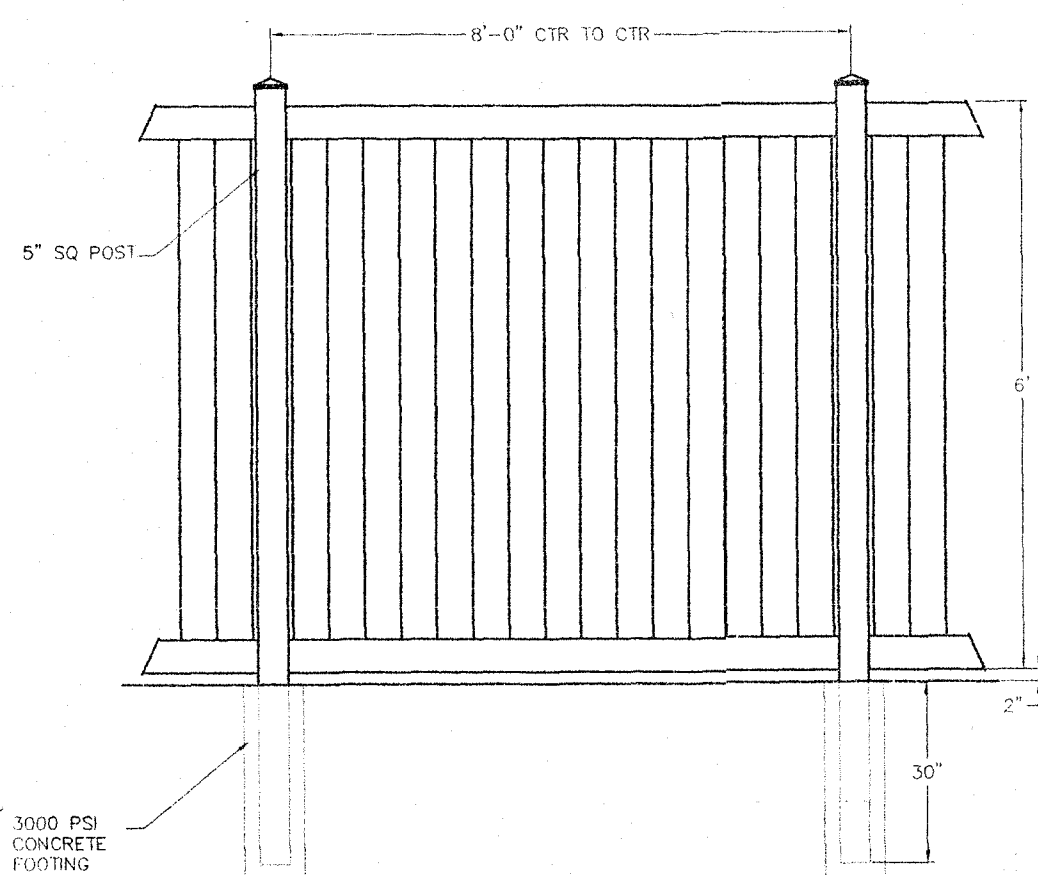
NOTES:

1. CONCRETE CURB SHALL BE IN ACCORDANCE WITH NYSDOT STANDARD SPECIFICATION SECTION 609.
2. PRECAST CONCRETE CURB MAY BE SUBSTITUTED WHEN ALTERNATE CONSTRUCTION DETAILS ARE SUBMITTED BY THE CONTRACTOR AND APPROVED BY THE ENGINEER.

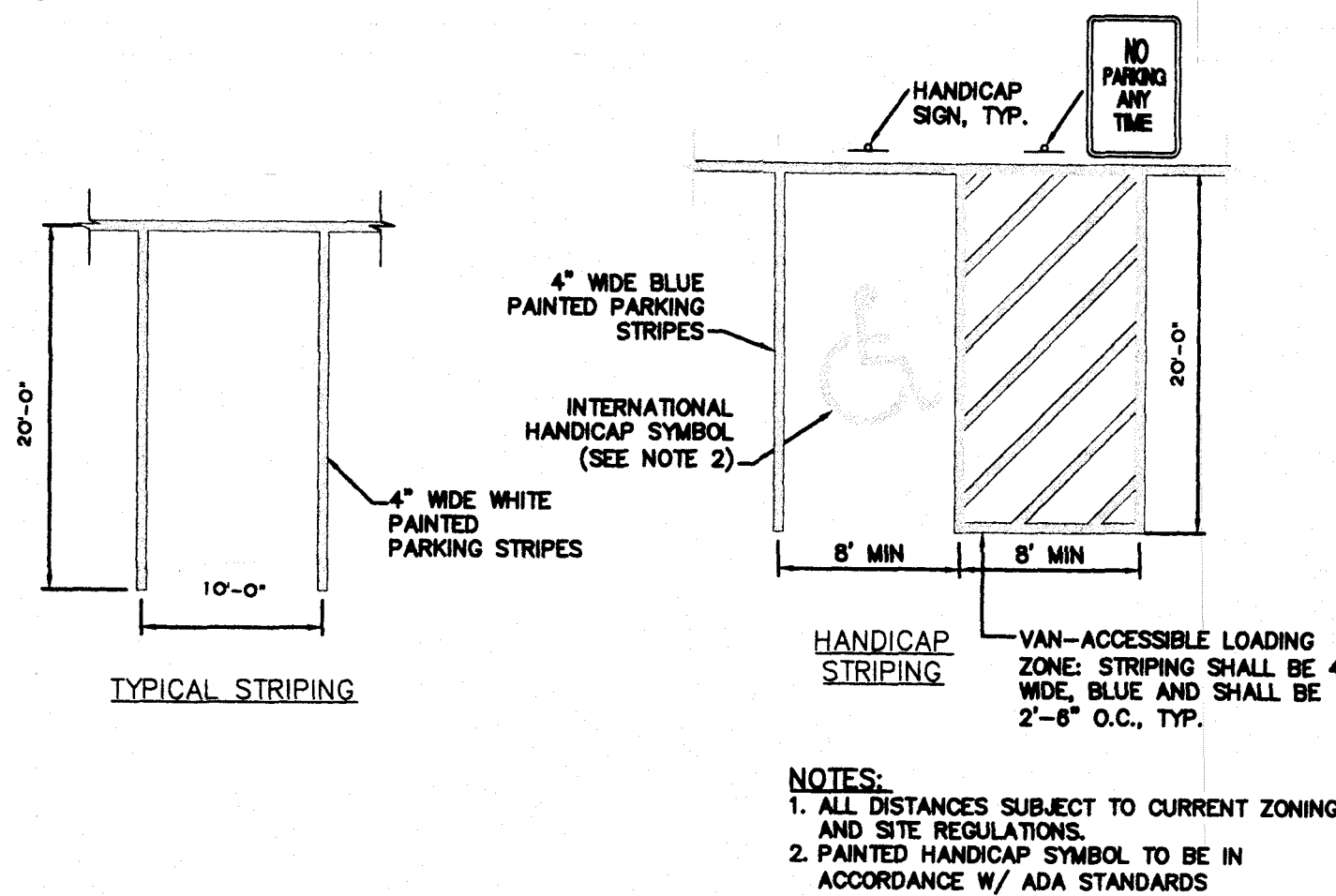
6 CONCRETE CURB @ SITE INTERIOR



7 DUMPSTER ENCLOSURE DETAIL



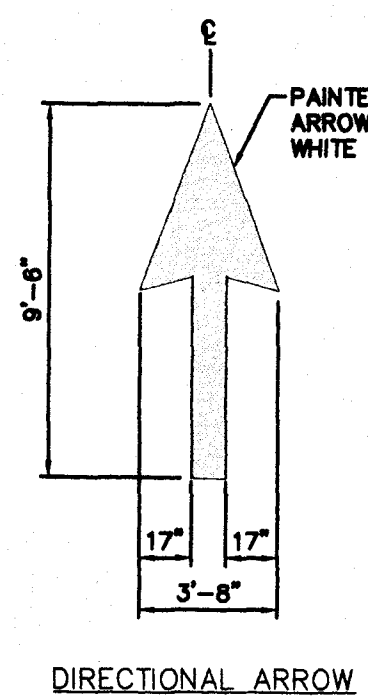
8 VINYL STOCKADE FENCE DETAIL



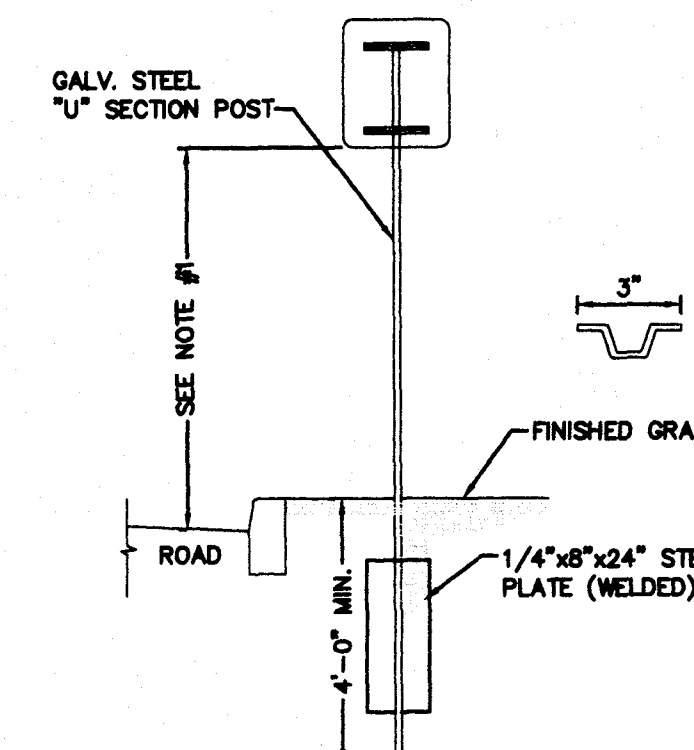
NOTES:

1. ALL DISTANCES SUBJECT TO CURRENT ZONING AND SITE REGULATIONS.
2. PAINTED HANDICAP SYMBOL TO BE IN ACCORDANCE W/ ADA STANDARDS

9 PAVEMENT MARKING



DIRECTIONAL ARROW



NOTES:

1. SIGN MOUNTING HEIGHT SHALL BE A MINIMUM OF 7'. MINIMUM MOUNTING HEIGHT MAY BE ADJUSTED ONLY IN ACCORDANCE WITH PROVISIONS OUTLINED IN "NYCRR, CHAPTER V-UNIFORM TRAFFIC CONTROL DEVICES."
2. SIGN POST SHALL BE IN ACCORDANCE W/ NYSDOT STANDARD SPECS SECTION 730.

10 SINGLE POST SIGN MOUNTING

SIGN SCHEDULE					
SIGN NO.	SIGN FACE	NUMBER	SIZE	COLORS	LEGEND
1		M12-1	24"x24"	BLUE	WHITE
2		P1-1C (NO ARROWS)	12"x18"	WHITE	RED
3		R1-1B	24"x24"	RED	WHITE

SIGNAGE NOTES:

1. ALL SIGNS SHALL CONFORM TO THE LATEST EDITION OF THE NYSDOT STANDARD SPECIFICATIONS, SECTION 640 AND THE CODES RULES AND REGULATIONS OF THE STATE OF NEW YORK (NYCRR) TITLE 17-TRANSPORTATION VOLUME B-CHAPTER V "UNIFORM TRAFFIC CONTROL DEVICES."