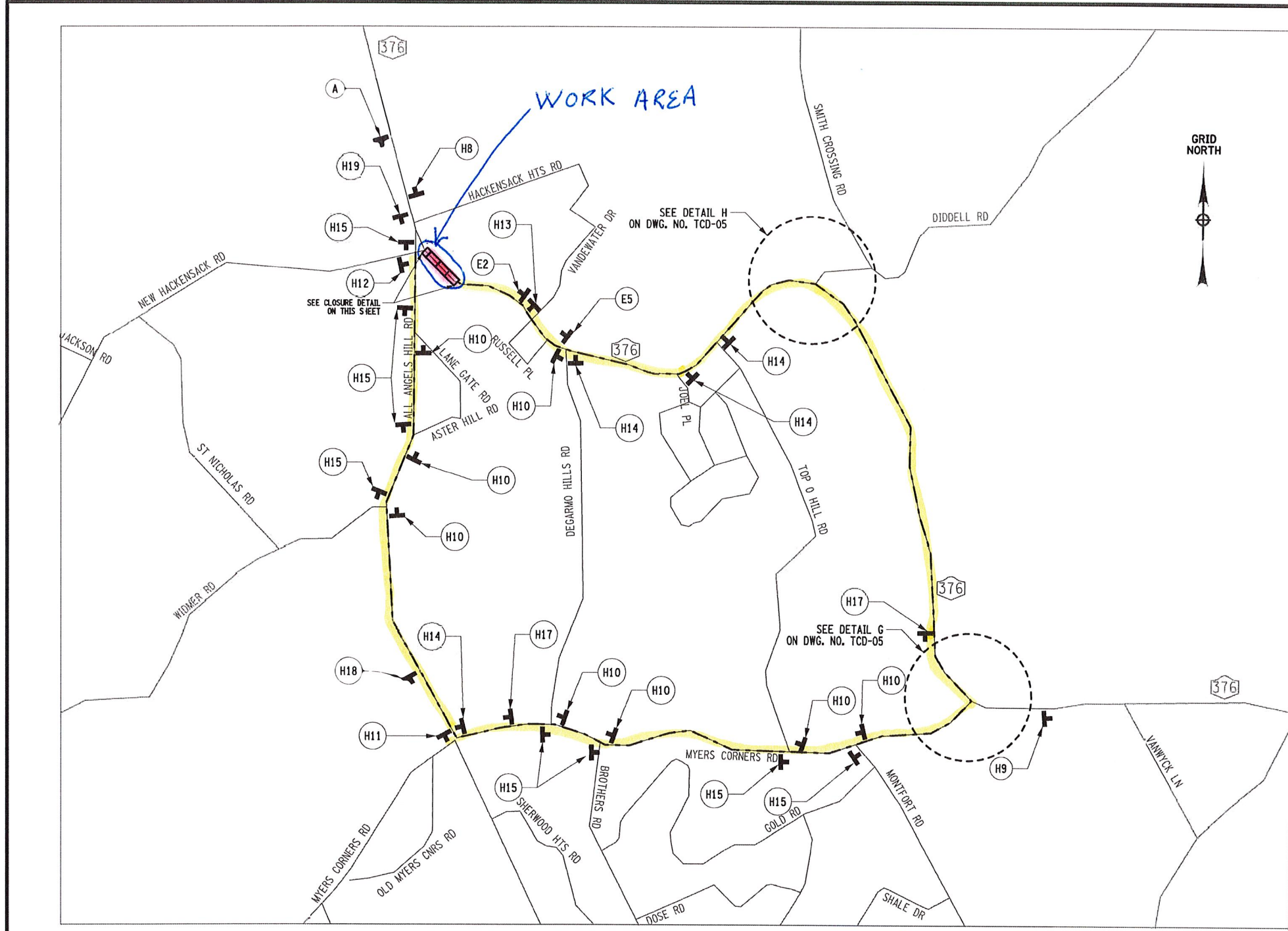
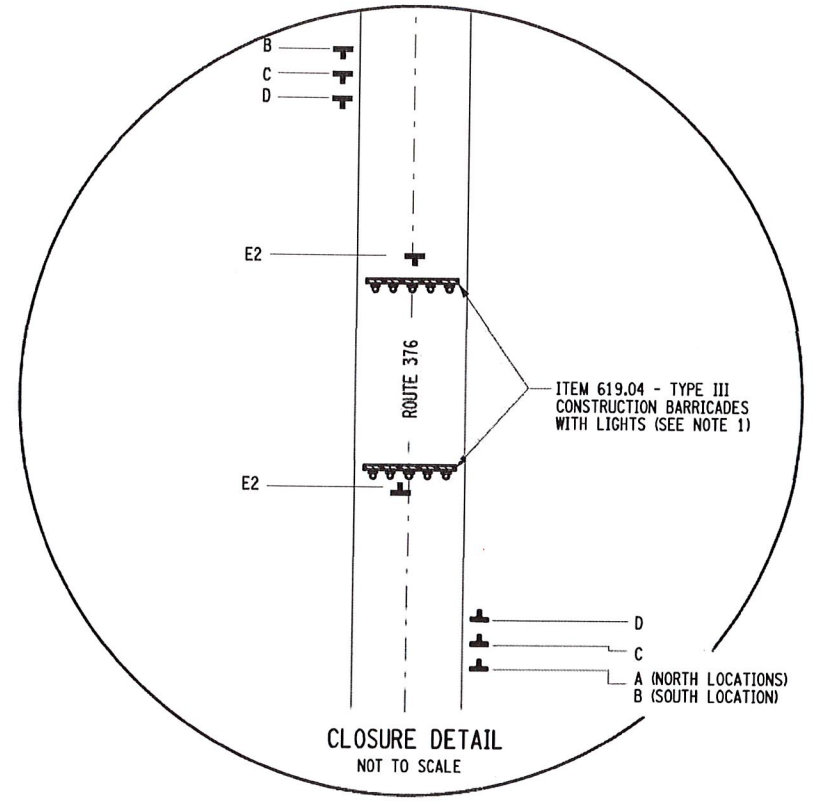


PROJECT MANAGER MARK KRUK
 CHECK
 DRAFTING
 CHECK
 DESIGN
 JOB MANAGER DEYLA OLARTE
 DESIGN SUPERVISOR MARK KRUK

FILE NAME = 839325_oph_tcd_03.dgn
 DATE/TIME = 12-JUL-2021 16:14
 USER = dolarte



THIS SHEET SUPERSEDES SHEET 20



ROUTE 376 CLOSURE DETAIL

NOT TO SCALE
 ALL ANGELS HILL ROAD
 TO MYERS CORNER ROAD
 TO ROUTE 376

- NOTES:
- TYPE III CONSTRUCTION BARRICADES WITH LIGHTING SHALL BE PAID FOR UNDER ITEM 619.04 ADDITIONAL CONSTRUCTION BARRICADES SHALL BE PLACED A.O.B.E.
 - TYPE III CONSTRUCTION BARRICADES SHALL BE PLACED PERPENDICULAR TO THE DIRECTION OF TRAVEL OF THE ROADWAY FROM THE EDGE OF SHOULDER TO THE EDGE OF SHOULDER.

LEGEND	
	SEE TCD-01 DETAIL SIGNAGE
	ROUTE 376 CLOSURE: TIME 9 MIN., LENGTH 5.1 MILES
	AREA UNDER CONSTRUCTION
	SIGN LOCATION SYMBOL
	VARIABLE MESSAGE SIGN

AFFIX SEAL: ON:	ALTERED BY: ON:

AS-BUILT REVISIONS DESCRIPTION OF ALTERATIONS:	SH 8093 FISHKILL PLAINS POUGHKEEPSIE, PT. 1	PIN 8393.25 NY 376 UTILITY QUALITY LEVEL D	BRIDGES	CULVERTS	ALL DIMENSIONS IN FT UNLESS OTHERWISE NOTED	CONTRACT NUMBER D264564
					TRAFFIC CONTROL DETOUR RTE 376 CLOSURE DETAIL	DRAWING NO. TCD-03 SHEET NO. 20A1
COUNTY: DUTCHESS		REGION: 08				

IT IS A VIOLATION OF LAW FOR ANY PERSON, UNLESS THEY ARE ACTING UNDER THE DIRECTION OF A LICENSED PROFESSIONAL ENGINEER, ARCHITECT, LANDSCAPE ARCHITECT, OR LAND SURVEYOR, TO ALTER AN ITEM IN ANY WAY. IF AN ITEM BEARING THE STAMP OF A LICENSED PROFESSIONAL IS ALTERED, THE ALTERING ENGINEER, ARCHITECT, LANDSCAPE ARCHITECT, OR LAND SURVEYOR SHALL STAMP THE DOCUMENT AND INCLUDE THE NOTATION "ALTERED BY" FOLLOWED BY THEIR SIGNATURE, THE DATE OF SUCH ALTERATION, AND A SPECIFIC DESCRIPTION OF THE ALTERATION.