



150111: 17.710 kWP
J.P. MORGAN CHASE
1460 Route 9
WAPPINGERS FALLS, NY 12590-4425
ASSESSOR'S #: 615700000000000000

ALPHABETICALLY LISTED
BY ZONING DISTRICT
ZONING: TOWN OF WAPPINGER
UTILITY: CENTRAL WATSON

DETAILED SPECIFICATION
CONSTRUCTION: COMMERCIAL, INDUSTRIAL
CONSTRUCTION: LOW DENSITY
WATER: 1.18 MG

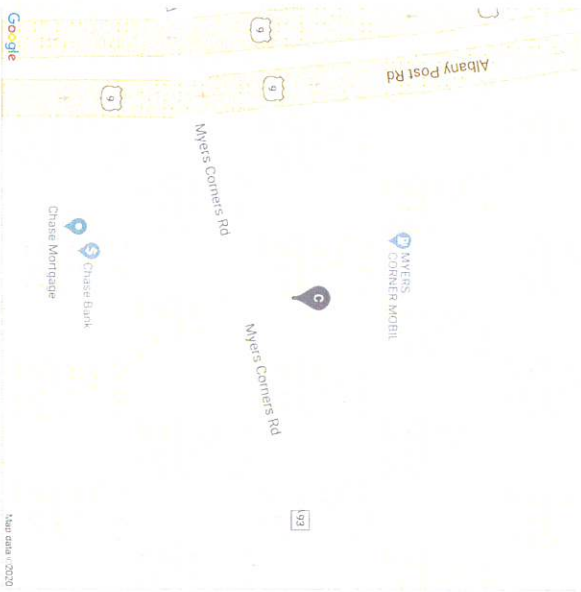
PROJECT INFORMATION

DETAILED SPECIFICATION
CONSTRUCTION: COMMERCIAL, INDUSTRIAL
CONSTRUCTION: LOW DENSITY
WATER: 1.18 MG

DETAILED SPECIFICATION
CONSTRUCTION: COMMERCIAL, INDUSTRIAL
CONSTRUCTION: LOW DENSITY
WATER: 1.18 MG



01 AERIAL PHOTO



02 VICINITY MAP

BLACK & VEATCH

J.P. MORGAN CHASE
1460 ROUTE 9 WAPPINGERS FALLS, NY 12590-4425

COVER PAGE

DATE

BY

1

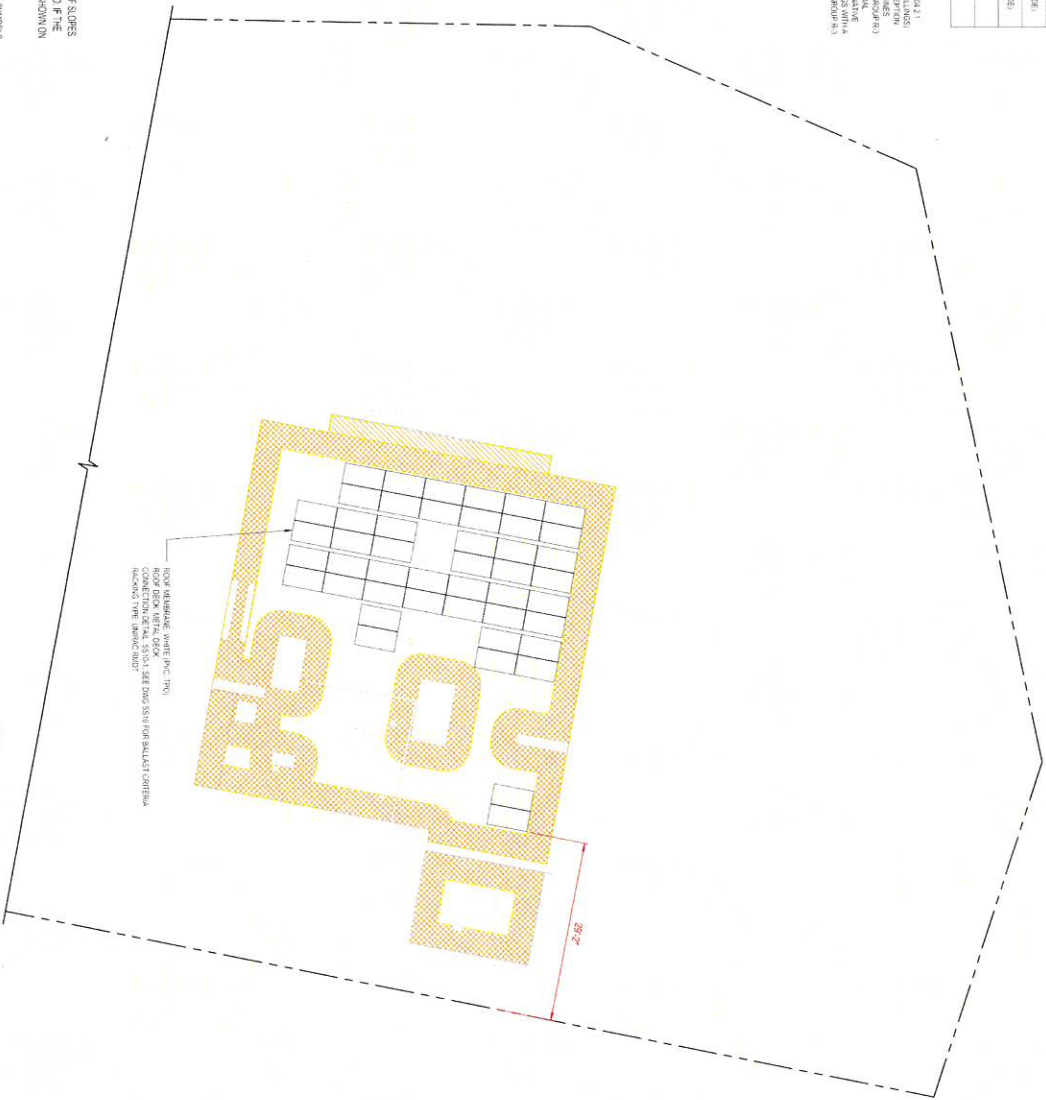
DRAWING INDEX	
DRAWING NUMBER	SHEET TITLE
G00	COVER PAGE
G01	SITE PLAN
E00	ELECTRICAL WIRING PLAN
E01	THREE LINE DIAGRAM & BILL OF MATERIALS
E02	ONE LINE DIAGRAM
E03	PLACEMENT
REQUIRED STANDARD DRAWING INDEX	
DRAWING NUMBER	SHEET TITLE
G00	COVER PAGE
G01	GENERAL NOTES
G02	GENERAL NOTES
G03	FLAT WOOD CONNECTION DETAILS
G04	ELECTRICAL DETAILS
G05	ELECTRICAL DETAILS
G06	MECHANICAL AND STRUCTURAL CONNECTION DETAILS
G07	MECHANICAL AND STRUCTURAL CONNECTION DETAILS
G08	MECHANICAL AND STRUCTURAL CONNECTION DETAILS
G09	MECHANICAL AND STRUCTURAL CONNECTION DETAILS
G10	MECHANICAL AND STRUCTURAL CONNECTION DETAILS
G11	MECHANICAL AND STRUCTURAL CONNECTION DETAILS
G12	MECHANICAL AND STRUCTURAL CONNECTION DETAILS
G13	MECHANICAL AND STRUCTURAL CONNECTION DETAILS
G14	MECHANICAL AND STRUCTURAL CONNECTION DETAILS
G15	MECHANICAL AND STRUCTURAL CONNECTION DETAILS
G16	MECHANICAL AND STRUCTURAL CONNECTION DETAILS
G17	MECHANICAL AND STRUCTURAL CONNECTION DETAILS
G18	MECHANICAL AND STRUCTURAL CONNECTION DETAILS
G19	MECHANICAL AND STRUCTURAL CONNECTION DETAILS
G20	MECHANICAL AND STRUCTURAL CONNECTION DETAILS
G21	MECHANICAL AND STRUCTURAL CONNECTION DETAILS
G22	MECHANICAL AND STRUCTURAL CONNECTION DETAILS
G23	MECHANICAL AND STRUCTURAL CONNECTION DETAILS
G24	MECHANICAL AND STRUCTURAL CONNECTION DETAILS
G25	MECHANICAL AND STRUCTURAL CONNECTION DETAILS
G26	MECHANICAL AND STRUCTURAL CONNECTION DETAILS
G27	MECHANICAL AND STRUCTURAL CONNECTION DETAILS
G28	MECHANICAL AND STRUCTURAL CONNECTION DETAILS
G29	MECHANICAL AND STRUCTURAL CONNECTION DETAILS
G30	MECHANICAL AND STRUCTURAL CONNECTION DETAILS
G31	MECHANICAL AND STRUCTURAL CONNECTION DETAILS
G32	MECHANICAL AND STRUCTURAL CONNECTION DETAILS
G33	MECHANICAL AND STRUCTURAL CONNECTION DETAILS
G34	MECHANICAL AND STRUCTURAL CONNECTION DETAILS
G35	MECHANICAL AND STRUCTURAL CONNECTION DETAILS
G36	MECHANICAL AND STRUCTURAL CONNECTION DETAILS
G37	MECHANICAL AND STRUCTURAL CONNECTION DETAILS
G38	MECHANICAL AND STRUCTURAL CONNECTION DETAILS
G39	MECHANICAL AND STRUCTURAL CONNECTION DETAILS
G40	MECHANICAL AND STRUCTURAL CONNECTION DETAILS
G41	MECHANICAL AND STRUCTURAL CONNECTION DETAILS
G42	MECHANICAL AND STRUCTURAL CONNECTION DETAILS
G43	MECHANICAL AND STRUCTURAL CONNECTION DETAILS
G44	MECHANICAL AND STRUCTURAL CONNECTION DETAILS
G45	MECHANICAL AND STRUCTURAL CONNECTION DETAILS
G46	MECHANICAL AND STRUCTURAL CONNECTION DETAILS
G47	MECHANICAL AND STRUCTURAL CONNECTION DETAILS
G48	MECHANICAL AND STRUCTURAL CONNECTION DETAILS
G49	MECHANICAL AND STRUCTURAL CONNECTION DETAILS
G50	MECHANICAL AND STRUCTURAL CONNECTION DETAILS
G51	MECHANICAL AND STRUCTURAL CONNECTION DETAILS
G52	MECHANICAL AND STRUCTURAL CONNECTION DETAILS
G53	MECHANICAL AND STRUCTURAL CONNECTION DETAILS
G54	MECHANICAL AND STRUCTURAL CONNECTION DETAILS
G55	MECHANICAL AND STRUCTURAL CONNECTION DETAILS
G56	MECHANICAL AND STRUCTURAL CONNECTION DETAILS
G57	MECHANICAL AND STRUCTURAL CONNECTION DETAILS
G58	MECHANICAL AND STRUCTURAL CONNECTION DETAILS
G59	MECHANICAL AND STRUCTURAL CONNECTION DETAILS
G60	MECHANICAL AND STRUCTURAL CONNECTION DETAILS
G61	MECHANICAL AND STRUCTURAL CONNECTION DETAILS
G62	MECHANICAL AND STRUCTURAL CONNECTION DETAILS
G63	MECHANICAL AND STRUCTURAL CONNECTION DETAILS
G64	MECHANICAL AND STRUCTURAL CONNECTION DETAILS
G65	MECHANICAL AND STRUCTURAL CONNECTION DETAILS
G66	MECHANICAL AND STRUCTURAL CONNECTION DETAILS
G67	MECHANICAL AND STRUCTURAL CONNECTION DETAILS
G68	MECHANICAL AND STRUCTURAL CONNECTION DETAILS
G69	MECHANICAL AND STRUCTURAL CONNECTION DETAILS
G70	MECHANICAL AND STRUCTURAL CONNECTION DETAILS
G71	MECHANICAL AND STRUCTURAL CONNECTION DETAILS
G72	MECHANICAL AND STRUCTURAL CONNECTION DETAILS
G73	MECHANICAL AND STRUCTURAL CONNECTION DETAILS
G74	MECHANICAL AND STRUCTURAL CONNECTION DETAILS
G75	MECHANICAL AND STRUCTURAL CONNECTION DETAILS
G76	MECHANICAL AND STRUCTURAL CONNECTION DETAILS
G77	MECHANICAL AND STRUCTURAL CONNECTION DETAILS
G78	MECHANICAL AND STRUCTURAL CONNECTION DETAILS
G79	MECHANICAL AND STRUCTURAL CONNECTION DETAILS
G80	MECHANICAL AND STRUCTURAL CONNECTION DETAILS
G81	MECHANICAL AND STRUCTURAL CONNECTION DETAILS
G82	MECHANICAL AND STRUCTURAL CONNECTION DETAILS
G83	MECHANICAL AND STRUCTURAL CONNECTION DETAILS
G84	MECHANICAL AND STRUCTURAL CONNECTION DETAILS
G85	MECHANICAL AND STRUCTURAL CONNECTION DETAILS
G86	MECHANICAL AND STRUCTURAL CONNECTION DETAILS
G87	MECHANICAL AND STRUCTURAL CONNECTION DETAILS
G88	MECHANICAL AND STRUCTURAL CONNECTION DETAILS
G89	MECHANICAL AND STRUCTURAL CONNECTION DETAILS
G90	MECHANICAL AND STRUCTURAL CONNECTION DETAILS
G91	MECHANICAL AND STRUCTURAL CONNECTION DETAILS
G92	MECHANICAL AND STRUCTURAL CONNECTION DETAILS
G93	MECHANICAL AND STRUCTURAL CONNECTION DETAILS
G94	MECHANICAL AND STRUCTURAL CONNECTION DETAILS
G95	MECHANICAL AND STRUCTURAL CONNECTION DETAILS
G96	MECHANICAL AND STRUCTURAL CONNECTION DETAILS
G97	MECHANICAL AND STRUCTURAL CONNECTION DETAILS
G98	MECHANICAL AND STRUCTURAL CONNECTION DETAILS
G99	MECHANICAL AND STRUCTURAL CONNECTION DETAILS
G100	MECHANICAL AND STRUCTURAL CONNECTION DETAILS



ROOF DESIGN & DRAINAGE TABLE		ITEM	MINIMUM CLEARANCE DIMENSIONS
ITEM			
1. FLAT ROOF		4" 2"	
2. PITCHED ROOF		6" 2" (3" MINIMUM EACH SIDE)	
3. PITCHED ROOF		3" 2" (3" MINIMUM EACH SIDE)	
4. PITCHED ROOF		6" 2"	
5. PITCHED ROOF		3" 2"	
6. PITCHED ROOF		3" 2"	

NOTES:
1. THE ROOFING OF THE BUILDING SHALL BE DONE IN ACCORDANCE WITH THE FOLLOWING:
A. THE ROOFING SHALL BE DONE IN ACCORDANCE WITH THE FOLLOWING:
B. THE ROOFING SHALL BE DONE IN ACCORDANCE WITH THE FOLLOWING:
C. THE ROOFING SHALL BE DONE IN ACCORDANCE WITH THE FOLLOWING:
D. THE ROOFING SHALL BE DONE IN ACCORDANCE WITH THE FOLLOWING:
E. THE ROOFING SHALL BE DONE IN ACCORDANCE WITH THE FOLLOWING:
F. THE ROOFING SHALL BE DONE IN ACCORDANCE WITH THE FOLLOWING:
G. THE ROOFING SHALL BE DONE IN ACCORDANCE WITH THE FOLLOWING:
H. THE ROOFING SHALL BE DONE IN ACCORDANCE WITH THE FOLLOWING:
I. THE ROOFING SHALL BE DONE IN ACCORDANCE WITH THE FOLLOWING:
J. THE ROOFING SHALL BE DONE IN ACCORDANCE WITH THE FOLLOWING:
K. THE ROOFING SHALL BE DONE IN ACCORDANCE WITH THE FOLLOWING:
L. THE ROOFING SHALL BE DONE IN ACCORDANCE WITH THE FOLLOWING:
M. THE ROOFING SHALL BE DONE IN ACCORDANCE WITH THE FOLLOWING:
N. THE ROOFING SHALL BE DONE IN ACCORDANCE WITH THE FOLLOWING:
O. THE ROOFING SHALL BE DONE IN ACCORDANCE WITH THE FOLLOWING:
P. THE ROOFING SHALL BE DONE IN ACCORDANCE WITH THE FOLLOWING:
Q. THE ROOFING SHALL BE DONE IN ACCORDANCE WITH THE FOLLOWING:
R. THE ROOFING SHALL BE DONE IN ACCORDANCE WITH THE FOLLOWING:
S. THE ROOFING SHALL BE DONE IN ACCORDANCE WITH THE FOLLOWING:
T. THE ROOFING SHALL BE DONE IN ACCORDANCE WITH THE FOLLOWING:
U. THE ROOFING SHALL BE DONE IN ACCORDANCE WITH THE FOLLOWING:
V. THE ROOFING SHALL BE DONE IN ACCORDANCE WITH THE FOLLOWING:
W. THE ROOFING SHALL BE DONE IN ACCORDANCE WITH THE FOLLOWING:
X. THE ROOFING SHALL BE DONE IN ACCORDANCE WITH THE FOLLOWING:
Y. THE ROOFING SHALL BE DONE IN ACCORDANCE WITH THE FOLLOWING:
Z. THE ROOFING SHALL BE DONE IN ACCORDANCE WITH THE FOLLOWING:

- LEGEND
- FLAT ROOF CLEARANCE AREA
 - PITCHED ROOF CLEARANCE AREA
 - EXISTING
 - PROPERTY LINE



ROOF CONNECTION DETAIL TABLE		ITEM	MINIMUM CLEARANCE DIMENSIONS
ITEM			
1. FLAT ROOF		4" 2"	
2. PITCHED ROOF		6" 2" (3" MINIMUM EACH SIDE)	
3. PITCHED ROOF		3" 2" (3" MINIMUM EACH SIDE)	
4. PITCHED ROOF		6" 2"	
5. PITCHED ROOF		3" 2"	
6. PITCHED ROOF		3" 2"	

NOTES:
1. CONTRACTORS SHALL VERIFY ALL DIMENSIONS AND ROOF SLOPES AND CORRELATE WITH ALL REFERENCE DRAWINGS IS REQUIRED. IF THE CONTRACTOR ENCOUNTERS CONDITIONS OTHER THAN WHAT IS SHOWN ON THE DRAWINGS, CONTRACTOR SHALL NOTIFY THE ENGINEER OF RECORD PRIOR TO START OF CONSTRUCTION.
2. SEE SHEET SLOPE AND SLOPE FOR GENERAL NOTES, LEGEND AND SYMBOLS.
3. FOR ROOF CONNECTIONS, CONTRACTOR SHALL VERIFY DIMENSIONS AND SLOPES NOTED OTHERWISE ON THIS SHEET.
4. DIMENSIONS IN CLEARANCE AREA SHALL BE 11' 0" TO A MINIMUM.
5. SOLAR ASSEMBLY DOES NOT INCLUDE EXISTING BUILDING HEIGHT FOR PITCHED ROOFS. FOR FLAT ROOFS, SOLAR ASSEMBLY EXTENDS 11' 0" MINIMUM ABOVE ROOF SURFACE WITH UNPAID ROOF PAVING AND EXTENDS 11' 0" MINIMUM ABOVE ROOF SURFACE WITH ROOF COVER BY RAILINGS.



ROOF CONNECTION DETAIL TABLE		ITEM	MINIMUM CLEARANCE DIMENSIONS
ITEM			
1. FLAT ROOF		4" 2"	
2. PITCHED ROOF		6" 2" (3" MINIMUM EACH SIDE)	
3. PITCHED ROOF		3" 2" (3" MINIMUM EACH SIDE)	
4. PITCHED ROOF		6" 2"	
5. PITCHED ROOF		3" 2"	
6. PITCHED ROOF		3" 2"	

NOTES:
1. CONTRACTORS SHALL VERIFY ALL DIMENSIONS AND ROOF SLOPES AND CORRELATE WITH ALL REFERENCE DRAWINGS IS REQUIRED. IF THE CONTRACTOR ENCOUNTERS CONDITIONS OTHER THAN WHAT IS SHOWN ON THE DRAWINGS, CONTRACTOR SHALL NOTIFY THE ENGINEER OF RECORD PRIOR TO START OF CONSTRUCTION.
2. SEE SHEET SLOPE AND SLOPE FOR GENERAL NOTES, LEGEND AND SYMBOLS.
3. FOR ROOF CONNECTIONS, CONTRACTOR SHALL VERIFY DIMENSIONS AND SLOPES NOTED OTHERWISE ON THIS SHEET.
4. DIMENSIONS IN CLEARANCE AREA SHALL BE 11' 0" TO A MINIMUM.
5. SOLAR ASSEMBLY DOES NOT INCLUDE EXISTING BUILDING HEIGHT FOR PITCHED ROOFS. FOR FLAT ROOFS, SOLAR ASSEMBLY EXTENDS 11' 0" MINIMUM ABOVE ROOF SURFACE WITH UNPAID ROOF PAVING AND EXTENDS 11' 0" MINIMUM ABOVE ROOF SURFACE WITH ROOF COVER BY RAILINGS.

solar edge

Power Optimizer
for North America
P730 / P860 / P850



POWER OPTIMIZER

PV power optimization at the module-level
The most cost effective solution for commercial and large field installations

- Specifically designed to work with SolarEdge inverters
- Up to 25% more energy
- Balance of system cost reduction, 15% less wiring, fewer and simpler junction boxes
- Easy to install, easy to maintain
- Advanced monitoring and safety features
- Modular design, easy to install and maintain
- Use with any PV module connected to a SolarEdge inverter

NEC 2011/2014 THREE PHASE OPTIMIZER (PG. 1)

solar edge

Three Phase Inverters
for the 277/480V Grid for North America
SE200US SE200US SE230KUS



INVERTERS

The best choice for SolarEdge enabled systems

- Specifically designed to work with SolarEdge inverters
- Advanced monitoring and safety features
- Modular design, easy to install and maintain
- Use with any PV module connected to a SolarEdge inverter
- Balance of system cost reduction, 15% less wiring, fewer and simpler junction boxes
- Easy to install, easy to maintain
- Advanced monitoring and safety features
- Modular design, easy to install and maintain
- Use with any PV module connected to a SolarEdge inverter

THREE PHASE INVERTER (PG. 1)

Power Optimizer

For North America

25%
more energy



POWER OPTIMIZER

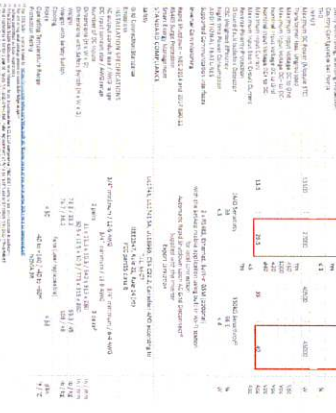
PV power optimization at the module-level
The most cost effective solution for commercial and large field installations

- Specifically designed to work with SolarEdge inverters
- Up to 25% more energy
- Balance of system cost reduction, 15% less wiring, fewer and simpler junction boxes
- Easy to install, easy to maintain
- Advanced monitoring and safety features
- Modular design, easy to install and maintain
- Use with any PV module connected to a SolarEdge inverter

NEC 2011/2014 THREE PHASE OPTIMIZER (PG. 2)

solar edge

Three Phase Inverters for the 277/480V Grid for North America
SE200US SE200US SE230KUS



THREE PHASE INVERTER (PG. 2)

THREE PHASE INVERTER (PG. 2)

Power Optimizer

For North America

25%
more energy



POWER OPTIMIZER

PV power optimization at the module-level
The most cost effective solution for commercial and large field installations

- Specifically designed to work with SolarEdge inverters
- Up to 25% more energy
- Balance of system cost reduction, 15% less wiring, fewer and simpler junction boxes
- Easy to install, easy to maintain
- Advanced monitoring and safety features
- Modular design, easy to install and maintain
- Use with any PV module connected to a SolarEdge inverter

NEC 2011/2014 THREE PHASE OPTIMIZER (PG. 2)

solar edge

Three Phase Inverters for the 277/480V Grid for North America
SE200US SE200US SE230KUS



THREE PHASE INVERTER (PG. 2)

THREE PHASE INVERTER (PG. 2)

Power Optimizer

For North America

25%
more energy



POWER OPTIMIZER

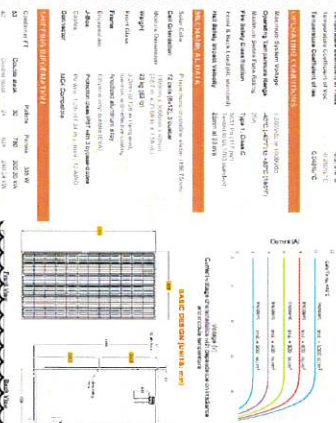
PV power optimization at the module-level
The most cost effective solution for commercial and large field installations

- Specifically designed to work with SolarEdge inverters
- Up to 25% more energy
- Balance of system cost reduction, 15% less wiring, fewer and simpler junction boxes
- Easy to install, easy to maintain
- Advanced monitoring and safety features
- Modular design, easy to install and maintain
- Use with any PV module connected to a SolarEdge inverter

NEC 2011/2014 THREE PHASE OPTIMIZER (PG. 2)

solar edge

Three Phase Inverters for the 277/480V Grid for North America
SE200US SE200US SE230KUS



THREE PHASE INVERTER (PG. 2)

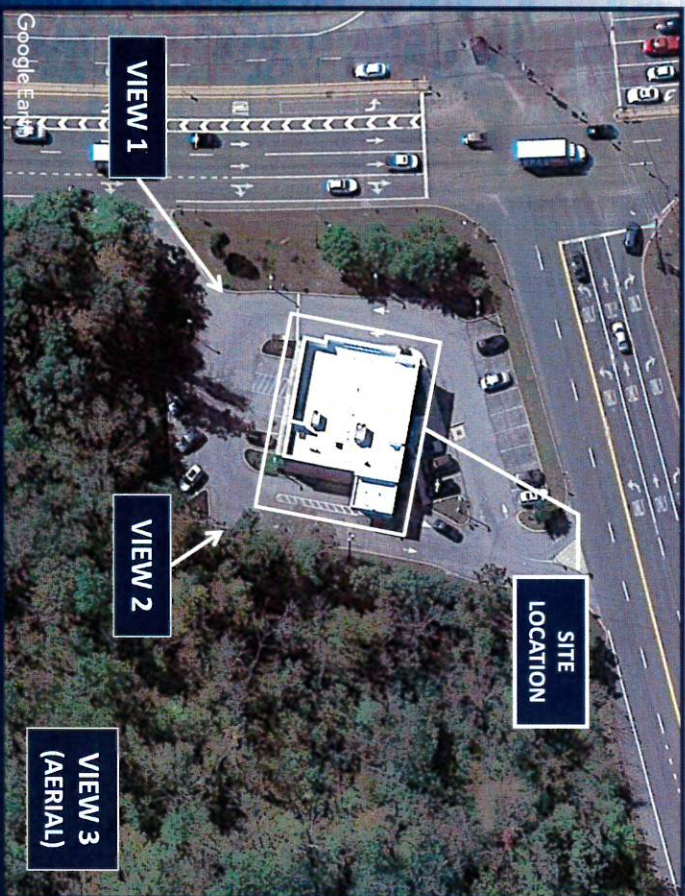
THREE PHASE INVERTER (PG. 2)



PHOTOGRAPHIC SIMULATION



BLACK & VEATCH
Building a world of difference.



The included Photographic Simulation(s) are intended as visual representations only and should not be used for construction purposes. The materials represented within the included Photographic Simulation(s) are subject to change.

SITE NUMBER:

150111

SITE NAME:

WAPPINGERS FALLS

SITE ADDRESS:

1460 ROUTE 9
WAPPINGERS FALLS, NY 12590

DATE:

05/05/2022

APPLICANT:

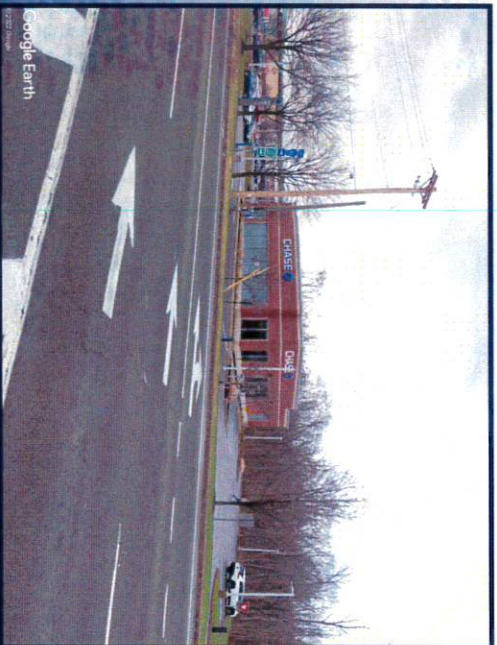
CHASE BANK

CONTACT:

BREANNE MOCABY
BLACK & VEATCH
(503) 443-4462



VIEW 1



EXISTING CONDITIONS



NO VISUAL CHANGES

PHOTOGRAPHIC SIMULATION

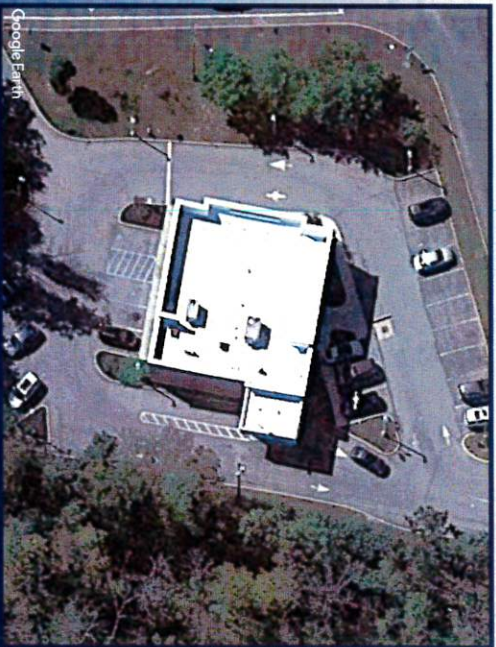


EXISTING CONDITIONS

PROPOSED EQUIPMENT



PHOTOGRAPHIC SIMULATION



EXISTING CONDITIONS

PROPOSED SOLAR PANELS



PHOTOGRAPHIC SIMULATION