

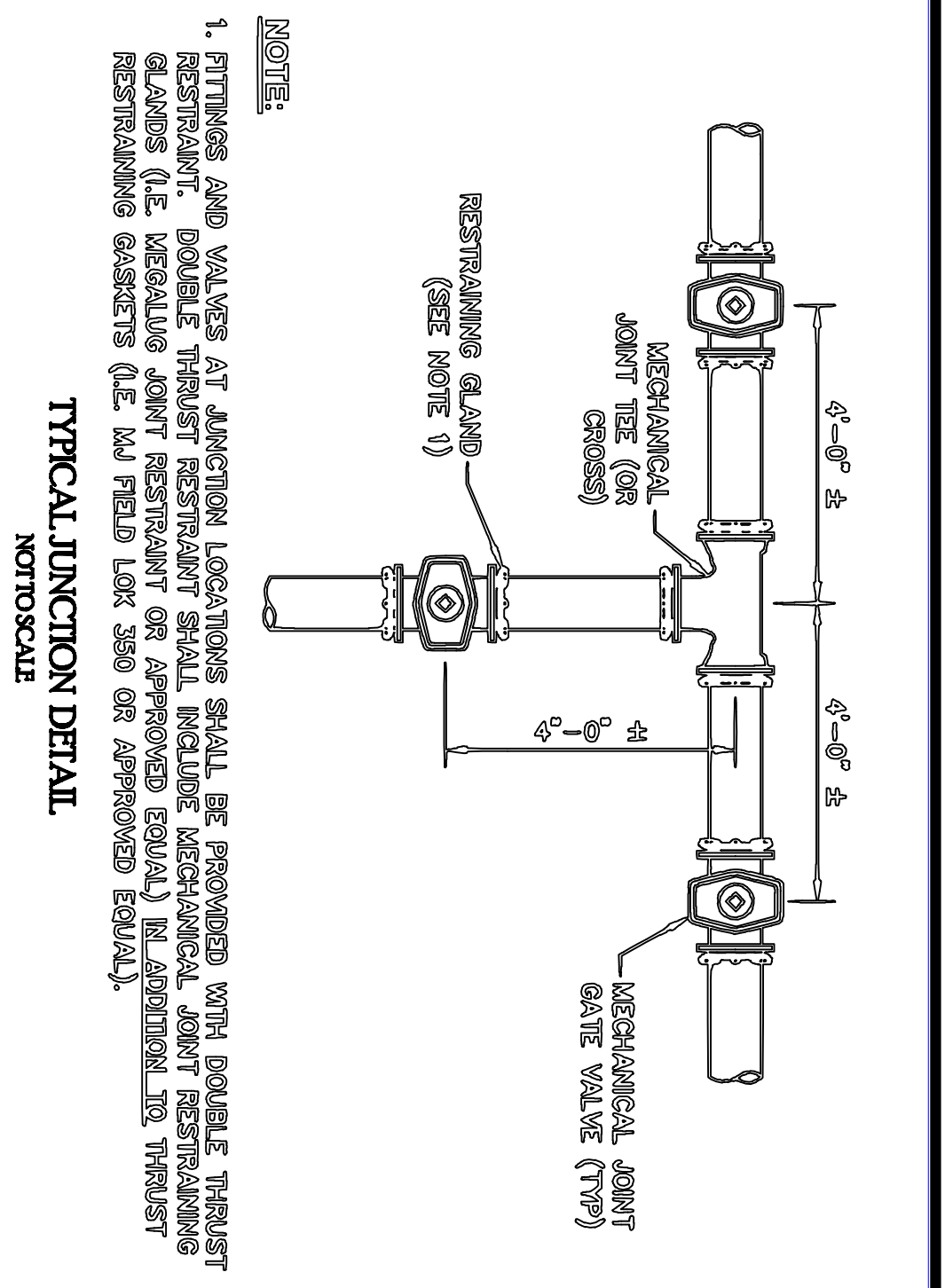
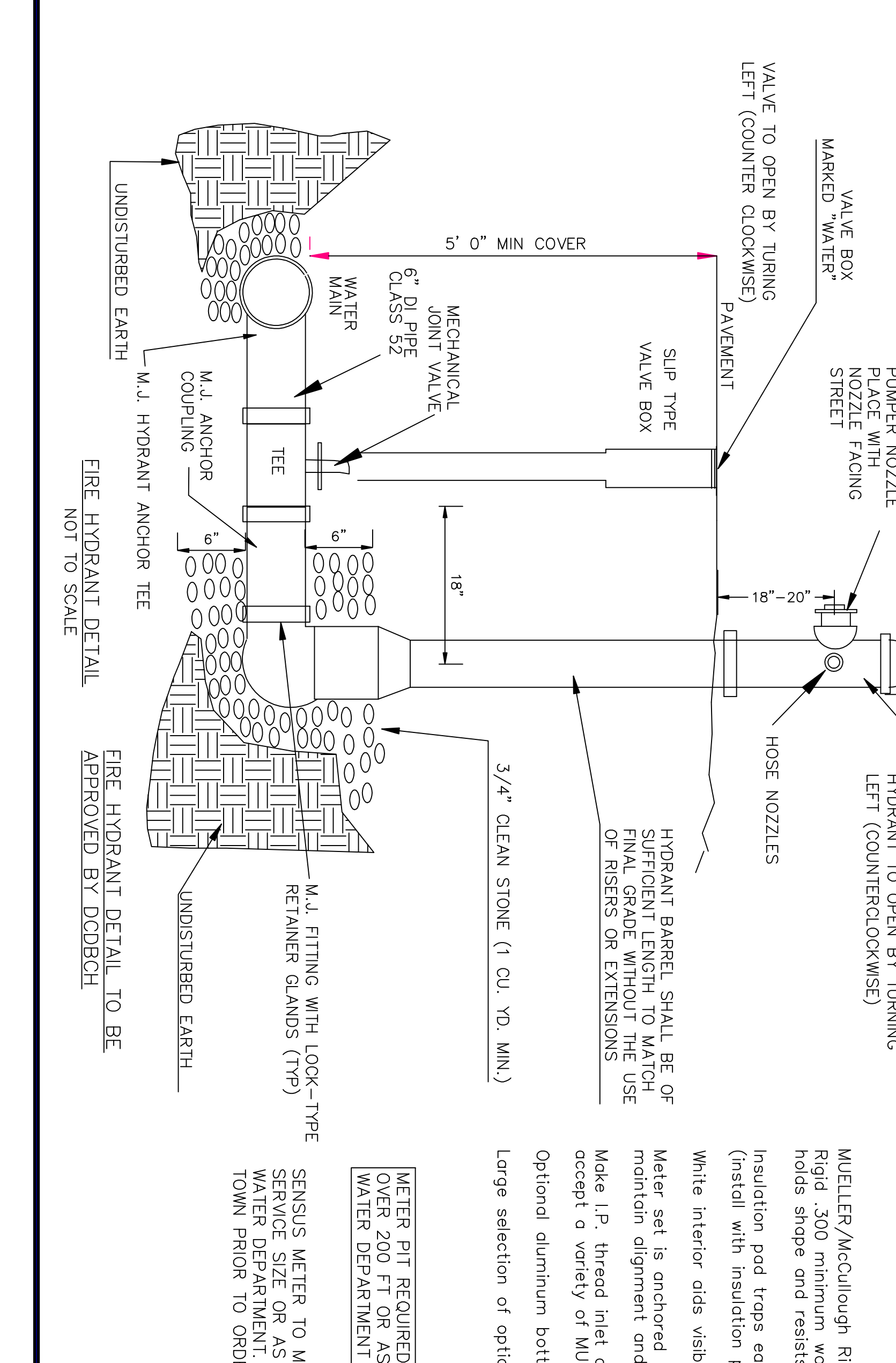
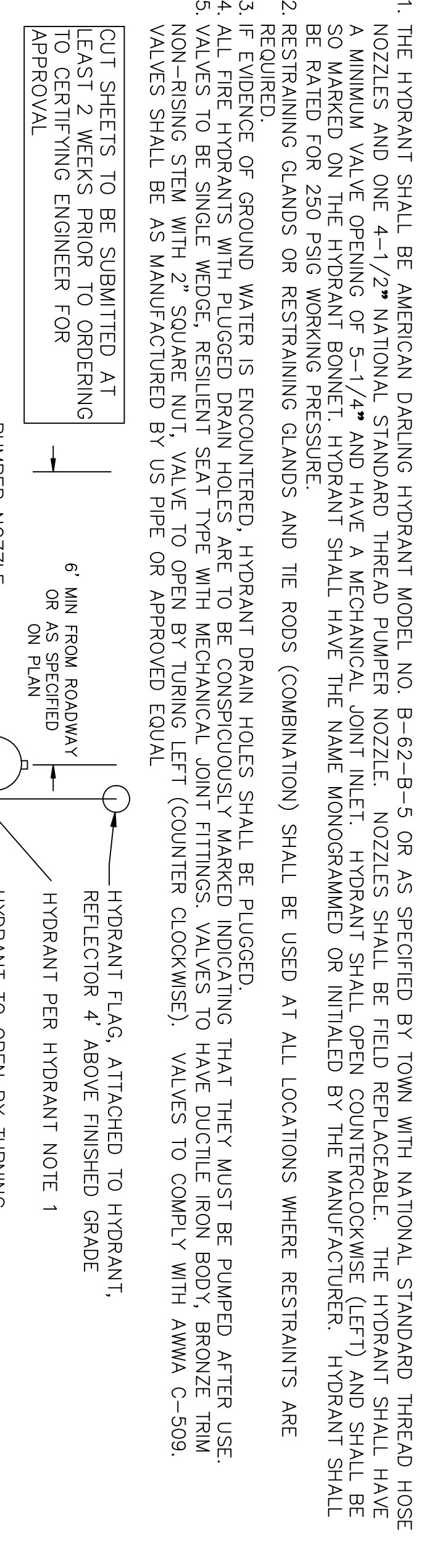
- NOTES:**
1. WATER VALVES SHALL HAVE THEIR INTERIOR AND EXTERIOR SURFACES PROTECTIVE COATED CONFORMING TO AWWA C500. WATER VALVES SHALL BE MECHANICAL JOINT, NON-RISING STEEL RESTRAINT WEDGE GATE VALVES.
 2. WATER VALVES SHALL OPEN TO THE LEFT (COUNTERCLOCKWISE) WITH A 2-INCH OPERATING DISTANCE TO ADJUST, FITTINGS, OR OTHER WET TAP OR STOP SHALL BE 3'-2".
 3. MAXIMUM DISTANCE TO ADJUST, FITTINGS, OR OTHER WET TAP OR STOP SHALL BE 3'-2".
 4. M.U. AND M.U. OF GATE VALVE AND VALVE BOX SHALL BE IN ACCORDANCE WITH PROJECT SPECIFICATIONS, SEE SECTION 33010.
- TYPICAL GATE VALVE**
- NOTES:**

JOINT RESTRAINT REQUIREMENTS

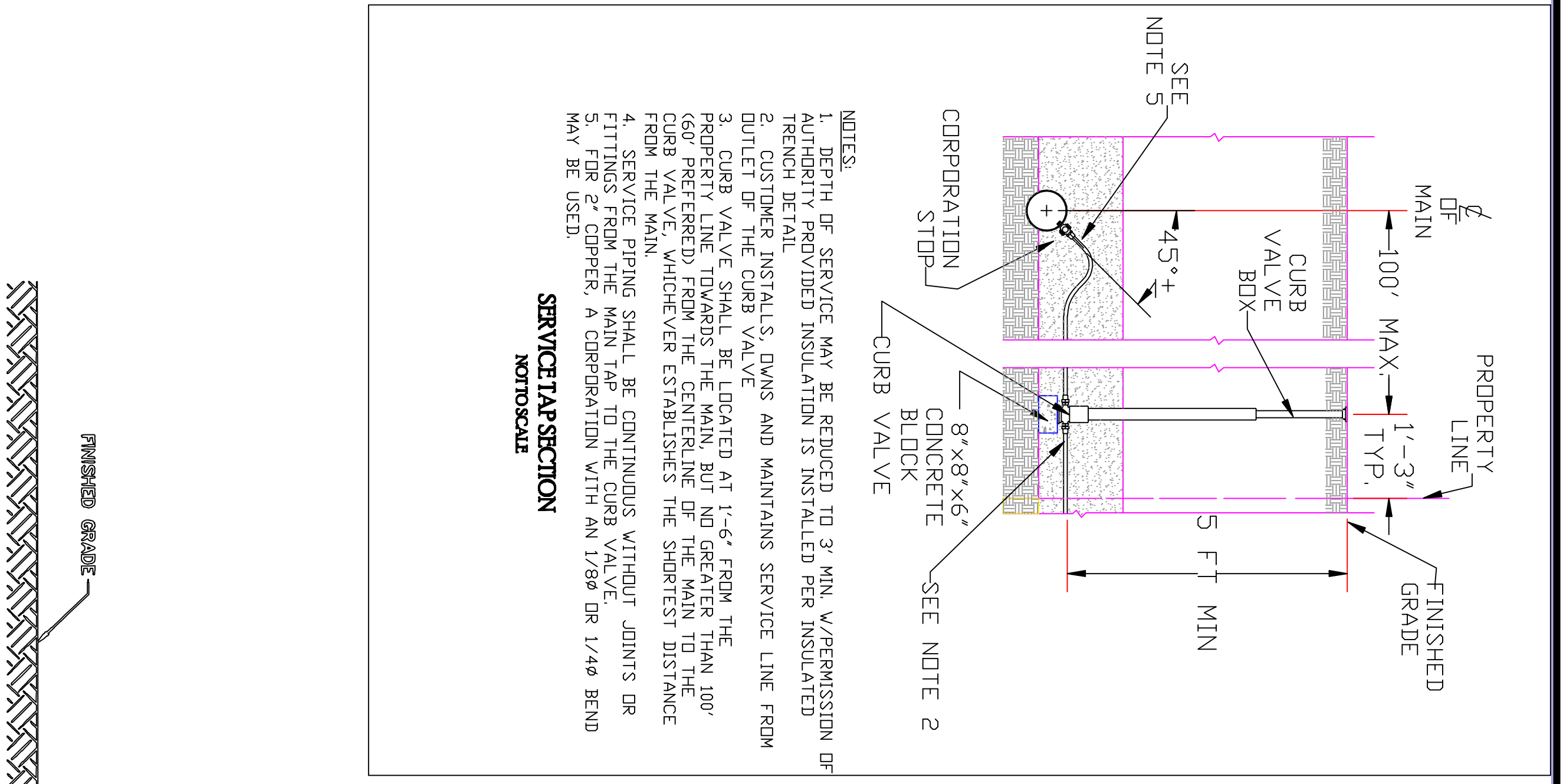
NOTES:

MINIMUM LENGTHS OF REQUIRED PIPE RESTRAINT (FT)									
PIPE SIZE (IN)	HORIZONTAL BENDS			VERTICAL BENDS			VALVES AND CAPS		
	90°	45°	22 1/2°	90°	45°	22 1/2°	SIZE	LENGTH	TEES
8	10	8	4	2	10	8	800	8	0
8	10	8	4	2	10	8	800	13	0
8	10	8	4	2	10	8	800	8	0
10	10	8	4	2	10	8	800	13	0
12	10	10	8	3	10	10	1200	17	0
12	10	10	8	3	10	10	1200	23	0

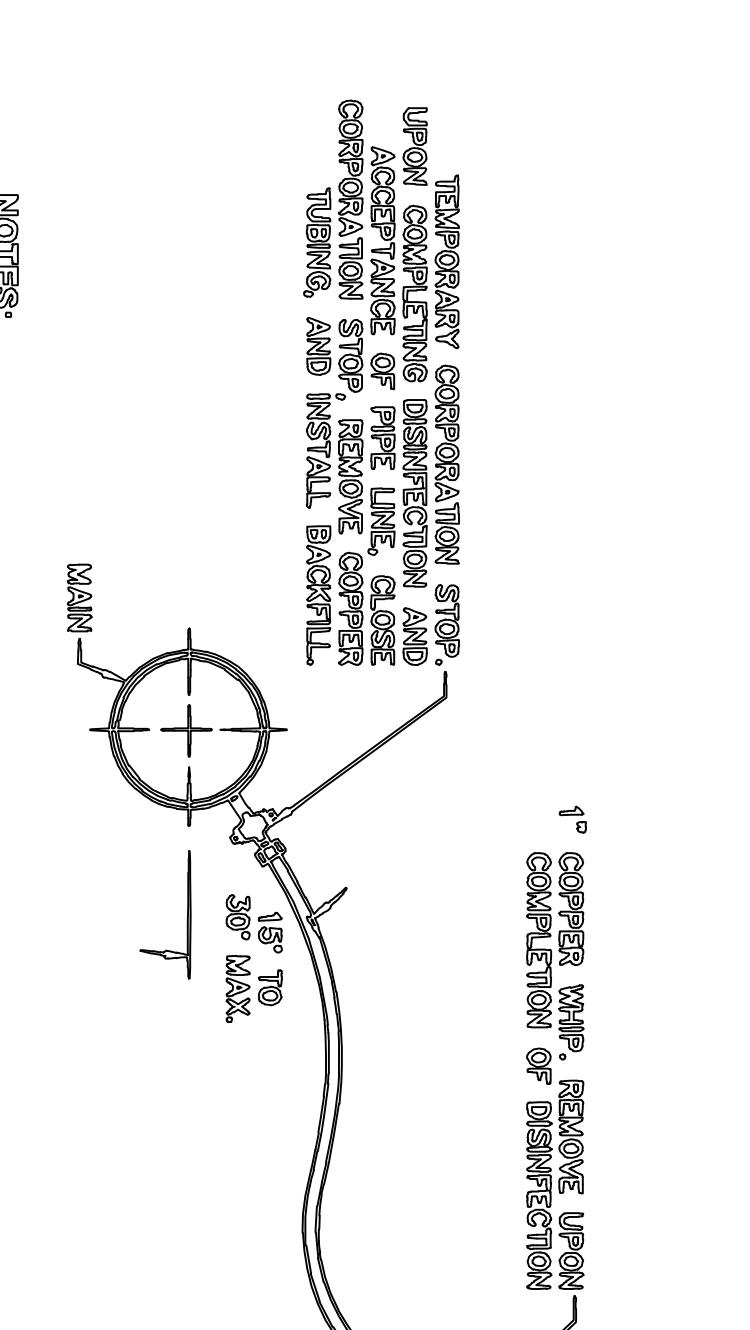
- NOTES:**
1. THE REQUIRED LENGTHS OF REQUIRED PIPE RESTRAINT ARE BASED UPON THE FOLLOWING ASSUMPTIONS:
 - A. AVERAGE SOIL CONDITIONS (SEMI).
 - B. DEPTH TO TOP OF PIPE 5' MINIMUM.
 - C. TEST PRESSURE OF 150 PSI.
 2. THE RESTRAINT REQUIREMENTS FOR 8" DIAMETER PIPE SHALL ALSO APPLY TO PIPE DIAMETERS LESS THAN 8".
 3. THE LENGTH OF NEW PIPE TO BE RESTRAINED IS THE LENGTH FOR EACH SIDE OF THE FITTING.
 4. FOR BELL AND SPONGE TAPER OR STYLE DUCTILE IRON PIPE, ALL JOINTS ARE TO BE RESTRAINED USING FIELD LOCK GASKETS.
 5. FOR MECHANICAL JOINT DUCTILE IRON FITTINGS, ALL JOINTS ARE TO BE RESTRAINED USING "WEDGE ACTION" RESTRAINING GLANDS.
- HYDRANT NOTES:**
1. THE HYDRANT SHALL BE AMERICAN DARTING HYDRANT MODEL NO. B-62-B-5 OR AS SPECIFIED BY TOWN WITH NATIONAL STANDARD THREAD HOSE NOZZLES AND ONE 4-1/2" NATIONAL STANDARD THREAD PUMPER NOZZLE. NOZZLES SHALL BE FIELD REPLACEABLE. THE HYDRANT SHALL HAVE A MINIMUM VALVE OPENING OF 5-1/4" AND HAVE A MECHANICAL JOINT INLET. HYDRANT SHALL OPEN COUNTERCLOCKWISE (LEFT) AND SHALL BE SO MARKED ON THE HYDRANT BONNET. HYDRANT SHALL HAVE THE NAME MONOGRAMMED OR INITIALED BY THE MANUFACTURER. HYDRANT SHALL BE RATED FOR 250 PSIG WORKING PRESSURE.
 2. RESTRAINING GLANDS OR RESTRAINING GLANDS AND THE RODS (COMBINATION) SHALL BE USED AT ALL LOCATIONS WHERE RESTRAINTS ARE REQUIRED.
 3. IF EVIDENCE OF GROUND WATER IS ENCOUNTERED, HYDRANT DRAIN HOLES SHALL BE PLUGGED.
 4. ALL FIRE HYDRANTS WITH PLUGGED DRAIN HOLES ARE TO BE CONSPICUOUSLY MARKED INDICATING THAT THEY MUST BE PUMPED AFTER USE.
 5. VALVES TO BE SINGLE WEDGE, RESISTENT SEAT TYPE WITH MECHANICAL JOINT FITTINGS. VALVES TO COMPLY WITH AWWA C-509.
- VALVES SHALL BE AS MANUFACTURED BY US PIPE OR APPROVED EQUAL.



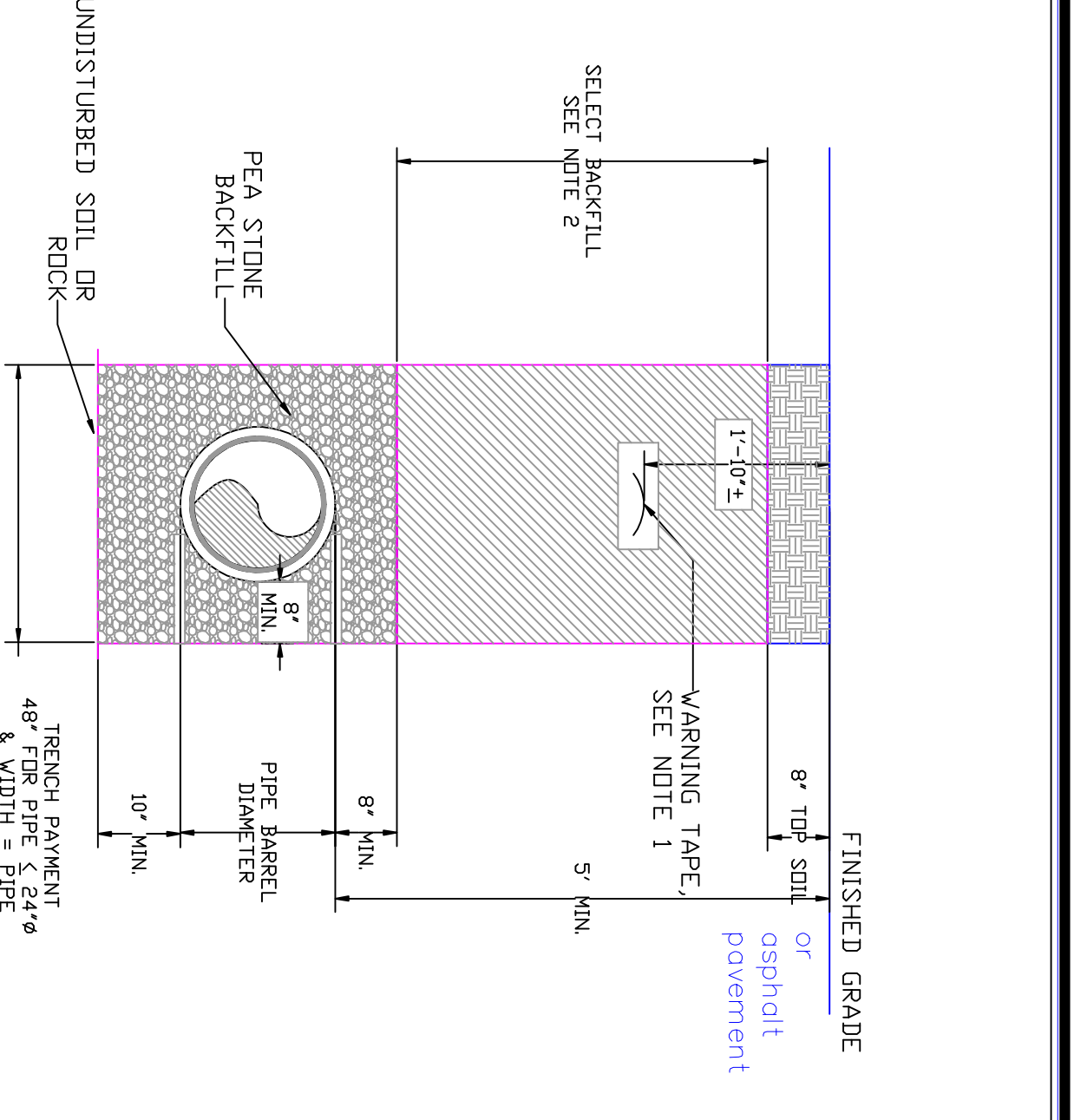
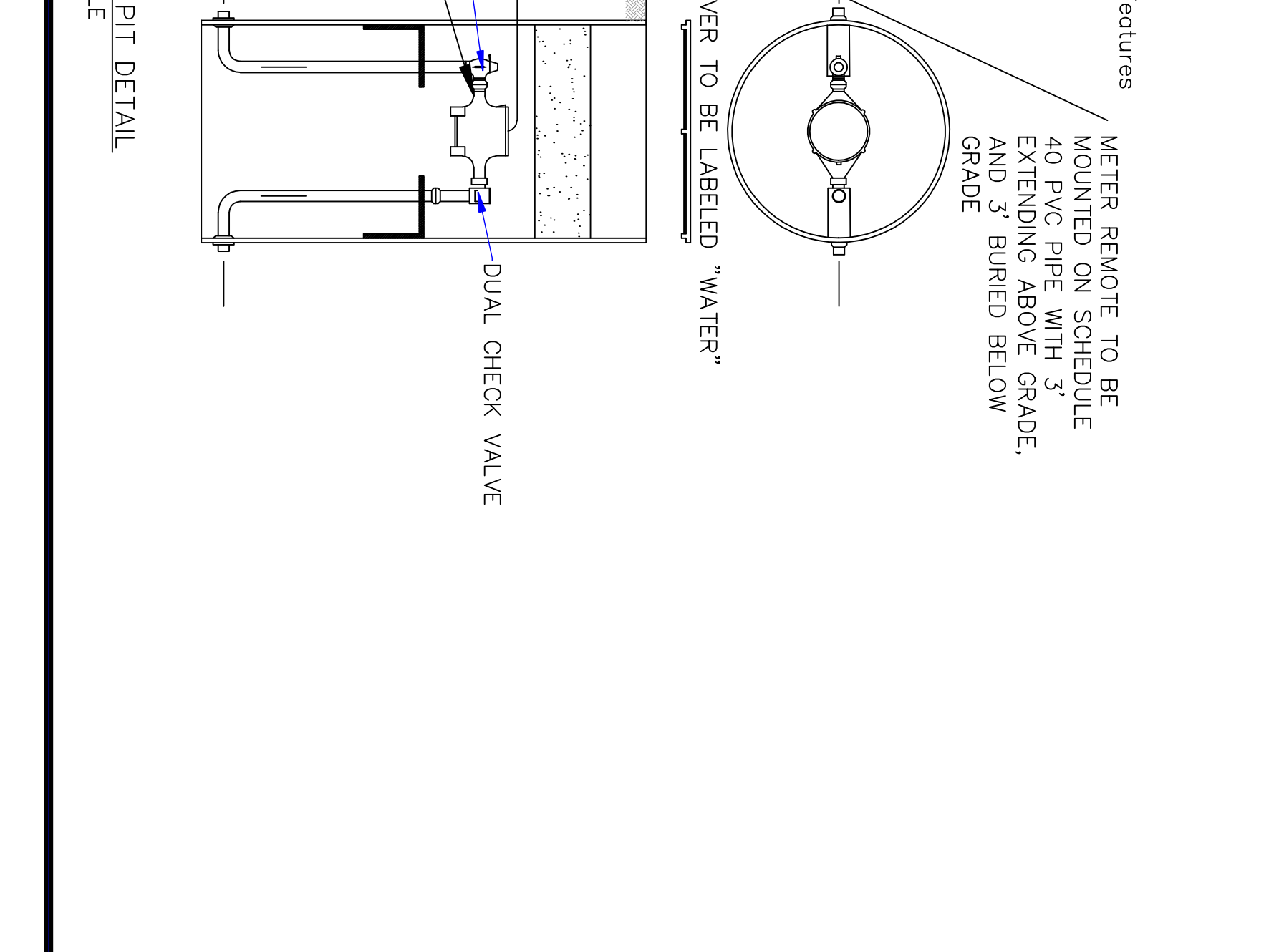
- NOTES:**
1. FITTINGS AND VALVES AT ALL JUNCTION LOCATIONS SHALL BE PROVIDED WITH DOUBLE THROAT RESTRAINTS. DOUBLE THROAT RESTRAINTS SHALL BE INSTALLED WITH RESTRAINTING GLANDS (SEE NOTE 1) AND SHALL BE FIELD LOCK 200 OR APPROVED EQUAL.
- TYPICAL JUNCTION DETAIL**
- NOTES:**



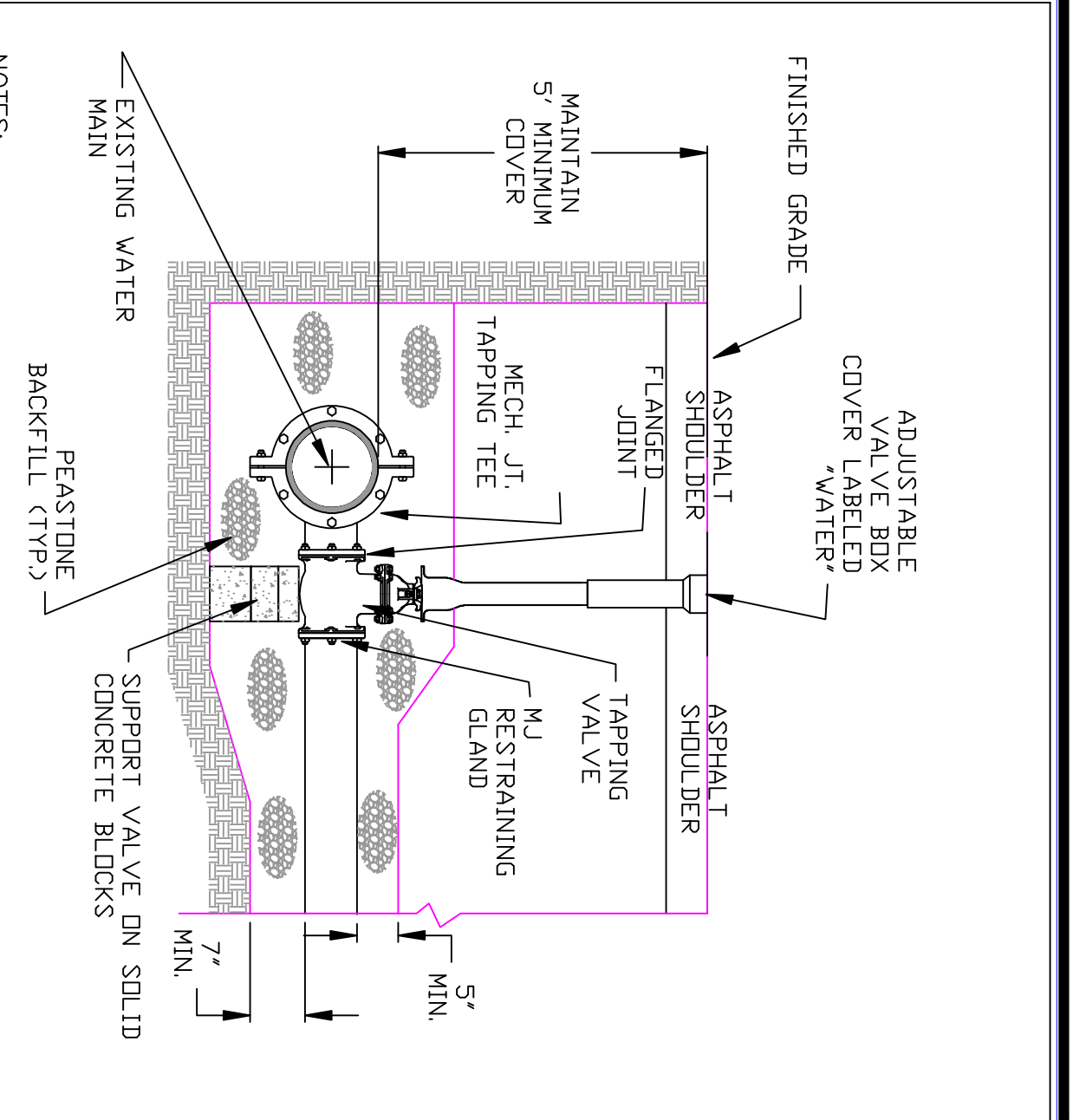
- NOTES:**
1. MINIMUM DEPTH OF SERVICE MAY BE REDUCED TO 3' MIN. V/RESECTION OF AUTHORITY PROVIDED INSULATION IS INSTALLED PER INSULATED TRENCH DETAIL.
 2. CUSTOMER INSTALLS, OWNS AND MAINTAINS SERVICE LINE FROM TRENCH DETAIL.
 3. CURB VALVE SHALL BE LOCATED AT 1'-6" FROM THE PROPERTY LINE TOWARD THE MAIN, BUT NO GREATER THAN 100' FROM THE MAIN.
 4. SERVICE PIPING SHALL BE CONTINUOUS WITHOUT JOINTS OR FITTINGS FROM THE MAIN TAP TO THE CURB VALVE.
 5. IF DEEPER, A CORPORATION WITH AN 1/8" OR 1/4" BEND MAY BE USED.
- SERVICE TAP SECTION**
- NOTES:**



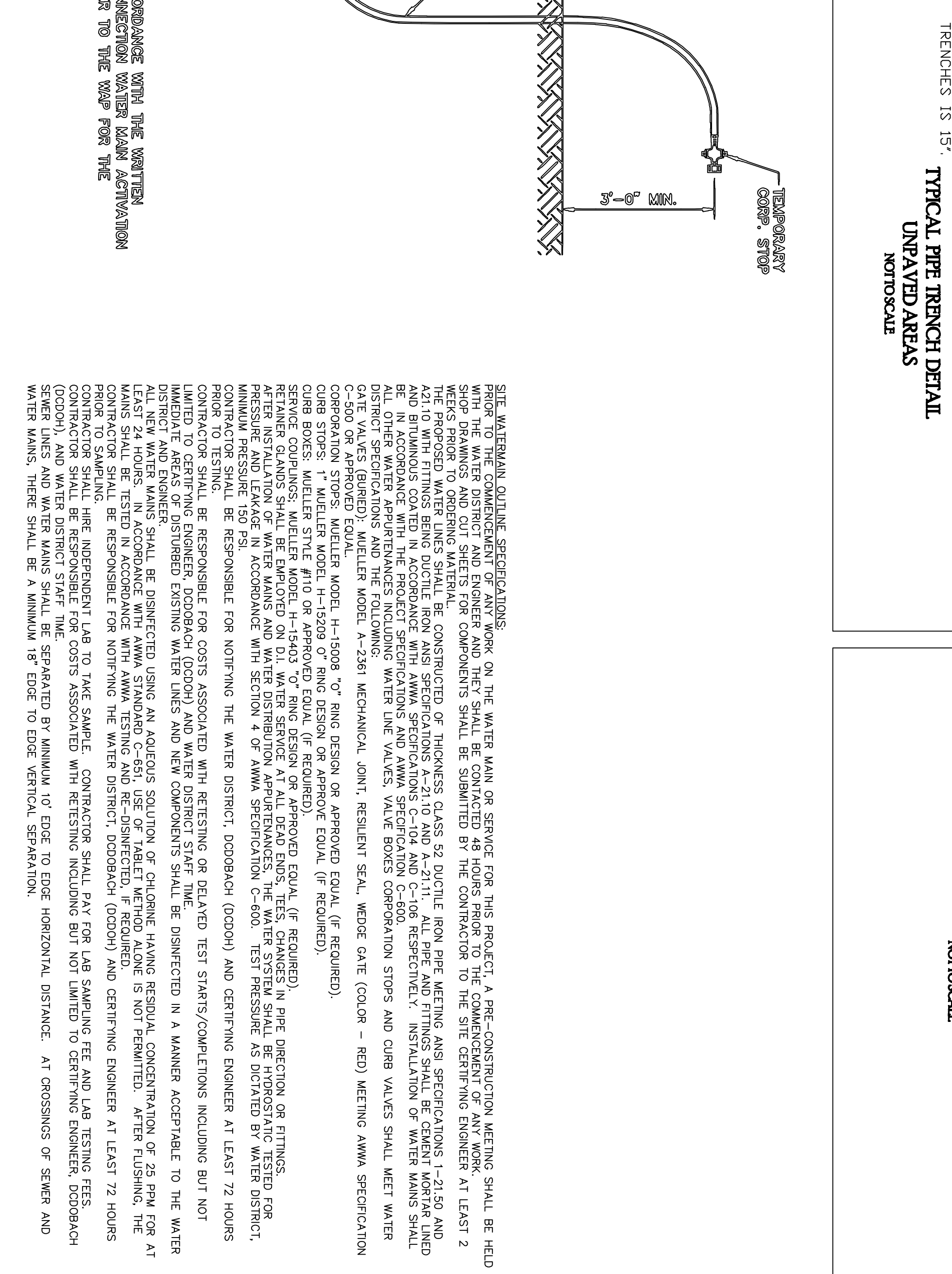
- NOTES:**
1. THE PROPOSED WATER MAIN SHALL BE ACTIVATED IN PHASES AND IN ACCORDANCE WITH THE WATER MAIN PLAN. AS PROVIDED AS EXHIBIT A TO THE PROJECT MANUAL, REFER TO THE MAP FOR THE LOCATION AND USE OF TEMPORARY AND DISSECTION TAP.
- TEMPORARY CORPORATION STOP**
- NOTES:**



- NOTES:**
1. 6" WIDE X 4 MIL THICK POLYETHYLENE BLUE UNDERGROUND WARNING TAPE READING IN BLACK INK "CAUTION BURIED WATERLINE BELOW", SETON CAT. # 97244 OR EQUAL.
 2. SELECT BACKFILL TO BE AS EXCAVATED MATERIAL WHICH HAS TOP SOIL, REDITS, DEBRIS AND STONES GREATER THAN 3" REMOVED. MATERIAL TO BE BACKFILLED TO A MINIMUM LIFT OF 8" AND COMPACTED TO 95% STANDARD PROCTOR DENSITY.
 3. CONTRACTOR SHALL SIFT & BRUSH TRENCH BED DASH STANDARDS WHEN EXCAVATING TO TRENCH DEPTH. UNLESS OTHERWISE APPROVED, SHEETING AND BRACING MUST BE REMOVED AS BACKFILL PROGRESSES.
 4. MINIMUM SIDE DISTANCE BETWEEN PIPE BARREL TO TRENCH SIDE IN ROCK TRENCHES IS 15".
- TRENCH DETAIL**
- NOTES:**



- NOTES:**
1. MAXIMUM BRANCH TAP IS MAIN 8" - 2"
- MAIN WET TAP FOR BRANCH**
- NOTES:**



- SITE WATER MAIN OUTLINE SPECIFICATIONS:**
1. THE WATER MAIN OR SERVICE FOR THE PROJECT A PRE-CONSTRUCTION MEETING SHALL BE HELD WITH THE WATER DISTRICT ENGINEER AND BROWER AND THEY SHALL BE CONDUCTED 48 HOURS PRIOR TO THE COMMENCEMENT OF ANY WORK.
 2. THE WATER MAIN SHALL BE CONSTRUCTED IN ACCORDANCE WITH THE PROJECT MANUAL, REFER TO THE MAP FOR THE LOCATION AND USE OF TEMPORARY AND DISSECTION TAP.
 3. THE WATER MAIN SHALL BE CONSTRUCTED IN ACCORDANCE WITH THE PROJECT MANUAL, REFER TO THE MAP FOR THE LOCATION AND USE OF TEMPORARY AND DISSECTION TAP.
 4. THE WATER MAIN SHALL BE CONSTRUCTED IN ACCORDANCE WITH THE PROJECT MANUAL, REFER TO THE MAP FOR THE LOCATION AND USE OF TEMPORARY AND DISSECTION TAP.
 5. THE WATER MAIN SHALL BE CONSTRUCTED IN ACCORDANCE WITH THE PROJECT MANUAL, REFER TO THE MAP FOR THE LOCATION AND USE OF TEMPORARY AND DISSECTION TAP.
 6. THE WATER MAIN SHALL BE CONSTRUCTED IN ACCORDANCE WITH THE PROJECT MANUAL, REFER TO THE MAP FOR THE LOCATION AND USE OF TEMPORARY AND DISSECTION TAP.
 7. THE WATER MAIN SHALL BE CONSTRUCTED IN ACCORDANCE WITH THE PROJECT MANUAL, REFER TO THE MAP FOR THE LOCATION AND USE OF TEMPORARY AND DISSECTION TAP.
 8. THE WATER MAIN SHALL BE CONSTRUCTED IN ACCORDANCE WITH THE PROJECT MANUAL, REFER TO THE MAP FOR THE LOCATION AND USE OF TEMPORARY AND DISSECTION TAP.
 9. THE WATER MAIN SHALL BE CONSTRUCTED IN ACCORDANCE WITH THE PROJECT MANUAL, REFER TO THE MAP FOR THE LOCATION AND USE OF TEMPORARY AND DISSECTION TAP.
 10. THE WATER MAIN SHALL BE CONSTRUCTED IN ACCORDANCE WITH THE PROJECT MANUAL, REFER TO THE MAP FOR THE LOCATION AND USE OF TEMPORARY AND DISSECTION TAP.
 11. THE WATER MAIN SHALL BE CONSTRUCTED IN ACCORDANCE WITH THE PROJECT MANUAL, REFER TO THE MAP FOR THE LOCATION AND USE OF TEMPORARY AND DISSECTION TAP.
 12. THE WATER MAIN SHALL BE CONSTRUCTED IN ACCORDANCE WITH THE PROJECT MANUAL, REFER TO THE MAP FOR THE LOCATION AND USE OF TEMPORARY AND DISSECTION TAP.
 13. THE WATER MAIN SHALL BE CONSTRUCTED IN ACCORDANCE WITH THE PROJECT MANUAL, REFER TO THE MAP FOR THE LOCATION AND USE OF TEMPORARY AND DISSECTION TAP.
 14. THE WATER MAIN SHALL BE CONSTRUCTED IN ACCORDANCE WITH THE PROJECT MANUAL, REFER TO THE MAP FOR THE LOCATION AND USE OF TEMPORARY AND DISSECTION TAP.
 15. THE WATER MAIN SHALL BE CONSTRUCTED IN ACCORDANCE WITH THE PROJECT MANUAL, REFER TO THE MAP FOR THE LOCATION AND USE OF TEMPORARY AND DISSECTION TAP.
 16. THE WATER MAIN SHALL BE CONSTRUCTED IN ACCORDANCE WITH THE PROJECT MANUAL, REFER TO THE MAP FOR THE LOCATION AND USE OF TEMPORARY AND DISSECTION TAP.
 17. THE WATER MAIN SHALL BE CONSTRUCTED IN ACCORDANCE WITH THE PROJECT MANUAL, REFER TO THE MAP FOR THE LOCATION AND USE OF TEMPORARY AND DISSECTION TAP.
 18. THE WATER MAIN SHALL BE CONSTRUCTED IN ACCORDANCE WITH THE PROJECT MANUAL, REFER TO THE MAP FOR THE LOCATION AND USE OF TEMPORARY AND DISSECTION TAP.
 19. THE WATER MAIN SHALL BE CONSTRUCTED IN ACCORDANCE WITH THE PROJECT MANUAL, REFER TO THE MAP FOR THE LOCATION AND USE OF TEMPORARY AND DISSECTION TAP.
 20. THE WATER MAIN SHALL BE CONSTRUCTED IN ACCORDANCE WITH THE PROJECT MANUAL, REFER TO THE MAP FOR THE LOCATION AND USE OF TEMPORARY AND DISSECTION TAP.
 21. THE WATER MAIN SHALL BE CONSTRUCTED IN ACCORDANCE WITH THE PROJECT MANUAL, REFER TO THE MAP FOR THE LOCATION AND USE OF TEMPORARY AND DISSECTION TAP.
 22. THE WATER MAIN SHALL BE CONSTRUCTED IN ACCORDANCE WITH THE PROJECT MANUAL, REFER TO THE MAP FOR THE LOCATION AND USE OF TEMPORARY AND DISSECTION TAP.
 23. THE WATER MAIN SHALL BE CONSTRUCTED IN ACCORDANCE WITH THE PROJECT MANUAL, REFER TO THE MAP FOR THE LOCATION AND USE OF TEMPORARY AND DISSECTION TAP.
 24. THE WATER MAIN SHALL BE CONSTRUCTED IN ACCORDANCE WITH THE PROJECT MANUAL, REFER TO THE MAP FOR THE LOCATION AND USE OF TEMPORARY AND DISSECTION TAP.
 25. THE WATER MAIN SHALL BE CONSTRUCTED IN ACCORDANCE WITH THE PROJECT MANUAL, REFER TO THE MAP FOR THE LOCATION AND USE OF TEMPORARY AND DISSECTION TAP.
 26. THE WATER MAIN SHALL BE CONSTRUCTED IN ACCORDANCE WITH THE PROJECT MANUAL, REFER TO THE MAP FOR THE LOCATION AND USE OF TEMPORARY AND DISSECTION TAP.
 27. THE WATER MAIN SHALL BE CONSTRUCTED IN ACCORDANCE WITH THE PROJECT MANUAL, REFER TO THE MAP FOR THE LOCATION AND USE OF TEMPORARY AND DISSECTION TAP.
 28. THE WATER MAIN SHALL BE CONSTRUCTED IN ACCORDANCE WITH THE PROJECT MANUAL, REFER TO THE MAP FOR THE LOCATION AND USE OF TEMPORARY AND DISSECTION TAP.
 29. THE WATER MAIN SHALL BE CONSTRUCTED IN ACCORDANCE WITH THE PROJECT MANUAL, REFER TO THE MAP FOR THE LOCATION AND USE OF TEMPORARY AND DISSECTION TAP.
 30. THE WATER MAIN SHALL BE CONSTRUCTED IN ACCORDANCE WITH THE PROJECT MANUAL, REFER TO THE MAP FOR THE LOCATION AND USE OF TEMPORARY AND DISSECTION TAP.
 31. THE WATER MAIN SHALL BE CONSTRUCTED IN ACCORDANCE WITH THE PROJECT MANUAL, REFER TO THE MAP FOR THE LOCATION AND USE OF TEMPORARY AND DISSECTION TAP.
 32. THE WATER MAIN SHALL BE CONSTRUCTED IN ACCORDANCE WITH THE PROJECT MANUAL, REFER TO THE MAP FOR THE LOCATION AND USE OF TEMPORARY AND DISSECTION TAP.
 33. THE WATER MAIN SHALL BE CONSTRUCTED IN ACCORDANCE WITH THE PROJECT MANUAL, REFER TO THE MAP FOR THE LOCATION AND USE OF TEMPORARY AND DISSECTION TAP.
 34. THE WATER MAIN SHALL BE CONSTRUCTED IN ACCORDANCE WITH THE PROJECT MANUAL, REFER TO THE MAP FOR THE LOCATION AND USE OF TEMPORARY AND DISSECTION TAP.
 35. THE WATER MAIN SHALL BE CONSTRUCTED IN ACCORDANCE WITH THE PROJECT MANUAL, REFER TO THE MAP FOR THE LOCATION AND USE OF TEMPORARY AND DISSECTION TAP.
 36. THE WATER MAIN SHALL BE CONSTRUCTED IN ACCORDANCE WITH THE PROJECT MANUAL, REFER TO THE MAP FOR THE LOCATION AND USE OF TEMPORARY AND DISSECTION TAP.
 37. THE WATER MAIN SHALL BE CONSTRUCTED IN ACCORDANCE WITH THE PROJECT MANUAL, REFER TO THE MAP FOR THE LOCATION AND USE OF TEMPORARY AND DISSECTION TAP.
 38. THE WATER MAIN SHALL BE CONSTRUCTED IN ACCORDANCE WITH THE PROJECT MANUAL, REFER TO THE MAP FOR THE LOCATION AND USE OF TEMPORARY AND DISSECTION TAP.
 39. THE WATER MAIN SHALL BE CONSTRUCTED IN ACCORDANCE WITH THE PROJECT MANUAL, REFER TO THE MAP FOR THE LOCATION AND USE OF TEMPORARY AND DISSECTION TAP.
 40. THE WATER MAIN SHALL BE CONSTRUCTED IN ACCORDANCE WITH THE PROJECT MANUAL, REFER TO THE MAP FOR THE LOCATION AND USE OF TEMPORARY AND DISSECTION TAP.
 41. THE WATER MAIN SHALL BE CONSTRUCTED IN ACCORDANCE WITH THE PROJECT MANUAL, REFER TO THE MAP FOR THE LOCATION AND USE OF TEMPORARY AND DISSECTION TAP.
 42. THE WATER MAIN SHALL BE CONSTRUCTED IN ACCORDANCE WITH THE PROJECT MANUAL, REFER TO THE MAP FOR THE LOCATION AND USE OF TEMPORARY AND DISSECTION TAP.
 43. THE WATER MAIN SHALL BE CONSTRUCTED IN ACCORDANCE WITH THE PROJECT MANUAL, REFER TO THE MAP FOR THE LOCATION AND USE OF TEMPORARY AND DISSECTION TAP.
 44. THE WATER MAIN SHALL BE CONSTRUCTED IN ACCORDANCE WITH THE PROJECT MANUAL, REFER TO THE MAP FOR THE LOCATION AND USE OF TEMPORARY AND DISSECTION TAP.
 45. THE WATER MAIN SHALL BE CONSTRUCTED IN ACCORDANCE WITH THE PROJECT MANUAL, REFER TO THE MAP FOR THE LOCATION AND USE OF TEMPORARY AND DISSECTION TAP.
 46. THE WATER MAIN SHALL BE CONSTRUCTED IN ACCORDANCE WITH THE PROJECT MANUAL, REFER TO THE MAP FOR THE LOCATION AND USE OF TEMPORARY AND DISSECTION TAP.
 47. THE WATER MAIN SHALL BE CONSTRUCTED IN ACCORDANCE WITH THE PROJECT MANUAL, REFER TO THE MAP FOR THE LOCATION AND USE OF TEMPORARY AND DISSECTION TAP.
 48. THE WATER MAIN SHALL BE CONSTRUCTED IN ACCORDANCE WITH THE PROJECT MANUAL, REFER TO THE MAP FOR THE LOCATION AND USE OF TEMPORARY AND DISSECTION TAP.
 49. THE WATER MAIN SHALL BE CONSTRUCTED IN ACCORDANCE WITH THE PROJECT MANUAL, REFER TO THE MAP FOR THE LOCATION AND USE OF TEMPORARY AND DISSECTION TAP.
 50. THE WATER MAIN SHALL BE CONSTRUCTED IN ACCORDANCE WITH THE PROJECT MANUAL, REFER TO THE MAP FOR THE LOCATION AND USE OF TEMPORARY AND DISSECTION TAP.
 51. THE WATER MAIN SHALL BE CONSTRUCTED IN ACCORDANCE WITH THE PROJECT MANUAL, REFER TO THE MAP FOR THE LOCATION AND USE OF TEMPORARY AND DISSECTION TAP.
 52. THE WATER MAIN SHALL BE CONSTRUCTED IN ACCORDANCE WITH THE PROJECT MANUAL, REFER TO THE MAP FOR THE LOCATION AND USE OF TEMPORARY AND DISSECTION TAP.
 53. THE WATER MAIN SHALL BE CONSTRUCTED IN ACCORDANCE WITH THE PROJECT MANUAL, REFER TO THE MAP FOR THE LOCATION AND USE OF TEMPORARY AND DISSECTION TAP.
 54. THE WATER MAIN SHALL BE CONSTRUCTED IN ACCORDANCE WITH THE PROJECT MANUAL, REFER TO THE MAP FOR THE LOCATION AND USE OF TEMPORARY AND DISSECTION TAP.
 55. THE WATER MAIN SHALL BE CONSTRUCTED IN ACCORDANCE WITH THE PROJECT MANUAL, REFER TO THE MAP FOR THE LOCATION AND USE OF TEMPORARY AND DISSECTION TAP.
 56. THE WATER MAIN SHALL BE CONSTRUCTED IN ACCORDANCE WITH THE PROJECT MANUAL, REFER TO THE MAP FOR THE LOCATION AND USE OF TEMPORARY AND DISSECTION TAP.
 57. THE WATER MAIN SHALL BE CONSTRUCTED IN ACCORDANCE WITH THE PROJECT MANUAL, REFER TO THE MAP FOR THE LOCATION AND USE OF TEMPORARY AND DISSECTION TAP.
 58. THE WATER MAIN SHALL BE CONSTRUCTED IN ACCORDANCE WITH THE PROJECT MANUAL, REFER TO THE MAP FOR THE LOCATION AND USE OF TEMPORARY AND DISSECTION TAP.
 59. THE WATER MAIN SHALL BE CONSTRUCTED IN ACCORDANCE WITH THE PROJECT MANUAL, REFER TO THE MAP FOR THE LOCATION AND USE OF TEMPORARY AND DISSECTION TAP.
 60. THE WATER MAIN SHALL BE CONSTRUCTED IN ACCORDANCE WITH THE PROJECT MANUAL, REFER TO THE MAP FOR THE LOCATION AND USE OF TEMPORARY AND DISSECTION TAP.
 61. THE WATER MAIN SHALL BE CONSTRUCTED IN ACCORDANCE WITH THE PROJECT MANUAL, REFER TO THE MAP FOR THE LOCATION AND USE OF TEMPORARY AND DISSECTION TAP.
 62. THE WATER MAIN SHALL BE CONSTRUCTED IN ACCORDANCE WITH THE PROJECT MANUAL, REFER TO THE MAP FOR THE LOCATION AND USE OF TEMPORARY AND DISSECTION TAP.
 63. THE WATER MAIN SHALL BE CONSTRUCTED IN ACCORDANCE WITH THE PROJECT MANUAL, REFER TO THE MAP FOR THE LOCATION AND USE OF TEMPORARY AND DISSECTION TAP.
 64. THE WATER MAIN SHALL BE CONSTRUCTED IN ACCORDANCE WITH THE PROJECT MANUAL, REFER TO THE MAP FOR THE LOCATION AND USE OF TEMPORARY AND DISSECTION TAP.
 65. THE WATER MAIN SHALL BE CONSTRUCTED IN ACCORDANCE WITH THE PROJECT MANUAL, REFER TO THE MAP FOR THE LOCATION AND USE OF TEMPORARY AND DISSECTION TAP.
 66. THE WATER MAIN SHALL BE CONSTRUCTED IN ACCORDANCE WITH THE PROJECT MANUAL, REFER TO THE MAP FOR THE LOCATION AND USE OF TEMPORARY AND DISSECTION TAP.
 67. THE WATER MAIN SHALL BE CONSTRUCTED IN ACCORDANCE WITH THE PROJECT MANUAL, REFER TO THE MAP FOR THE LOCATION AND USE OF TEMPORARY AND DISSECTION TAP.
 68. THE WATER MAIN SHALL BE CONSTRUCTED IN ACCORDANCE WITH THE PROJECT MANUAL, REFER TO THE MAP FOR THE LOCATION AND USE OF TEMPORARY AND DISSECTION TAP.
 69. THE WATER MAIN SHALL BE CONSTRUCTED IN ACCORDANCE WITH THE PROJECT MANUAL, REFER TO THE MAP FOR THE LOCATION AND USE OF TEMPORARY AND DISSECTION TAP.
 70. THE WATER MAIN SHALL BE CONSTRUCTED IN ACCORDANCE WITH THE PROJECT MANUAL, REFER TO THE MAP FOR THE LOCATION AND USE OF TEMPORARY AND DISSECTION TAP.
 71. THE WATER MAIN SHALL BE CONSTRUCTED IN ACCORDANCE WITH THE PROJECT MANUAL, REFER TO THE MAP FOR THE LOCATION AND USE OF TEMPORARY AND DISSECTION TAP.
 72. THE WATER MAIN SHALL BE CONSTRUCTED IN ACCORDANCE WITH THE PROJECT MANUAL, REFER TO THE MAP FOR THE LOCATION AND USE OF TEMPORARY AND DISSECTION TAP.
 73. THE WATER MAIN SHALL BE CONSTRUCTED IN ACCORDANCE WITH THE PROJECT MANUAL, REFER TO THE MAP FOR THE LOCATION AND USE OF TEMPORARY AND DISSECTION TAP.
 74. THE WATER MAIN SHALL BE CONSTRUCTED IN ACCORDANCE WITH THE PROJECT MANUAL, REFER TO THE MAP FOR THE LOCATION AND USE OF TEMPORARY AND DISSECTION TAP.
 75. THE WATER MAIN SHALL BE CONSTRUCTED IN ACCORDANCE WITH THE PROJECT MANUAL, REFER TO THE MAP FOR THE LOCATION AND USE OF TEMPORARY AND DISSECTION TAP.
 76. THE WATER MAIN SHALL BE CONSTRUCTED IN ACCORDANCE WITH THE PROJECT MANUAL, REFER TO THE MAP FOR THE LOCATION AND USE OF TEMPORARY AND DISSECTION TAP.
 77. THE WATER MAIN SHALL BE CONSTRUCTED IN ACCORDANCE WITH THE PROJECT MANUAL, REFER TO THE MAP FOR THE LOCATION AND USE OF TEMPORARY AND DISSECTION TAP.
 78. THE WATER MAIN SHALL BE CONSTRUCTED IN ACCORDANCE WITH THE PROJECT MANUAL, REFER TO THE MAP FOR THE LOCATION AND USE OF TEMPORARY AND DISSECTION TAP.
 79. THE WATER MAIN SHALL BE CONSTRUCTED IN ACCORDANCE WITH THE PROJECT MANUAL, REFER TO THE MAP FOR THE LOCATION AND USE OF TEMPORARY AND DISSECTION TAP.
 80. THE WATER MAIN SHALL BE CONSTRUCTED IN ACCORDANCE WITH THE PROJECT MANUAL, REFER TO THE MAP FOR THE LOCATION AND USE OF TEMPORARY AND DISSECTION TAP.
 81. THE WATER MAIN SHALL BE CONSTRUCTED IN ACCORDANCE WITH THE PROJECT MANUAL, REFER TO THE MAP FOR THE LOCATION AND USE OF TEMPORARY AND DISSECTION TAP.
 82. THE WATER MAIN SHALL BE CONSTRUCTED IN ACCORDANCE WITH THE PROJECT MANUAL, REFER TO THE MAP FOR THE LOCATION AND USE OF TEMPORARY AND DISSECTION TAP.
 83. THE WATER MAIN SHALL BE CONSTRUCTED IN ACCORDANCE WITH THE PROJECT MANUAL, REFER TO THE MAP FOR THE LOCATION AND USE OF TEMPORARY AND DISSECTION TAP.
 84. THE WATER MAIN SHALL BE CONSTRUCTED IN ACCORDANCE WITH THE PROJECT MANUAL, REFER TO THE MAP FOR THE LOCATION AND USE OF TEMPORARY AND DISSECTION TAP.
 85. THE WATER MAIN SHALL BE CONSTRUCTED IN ACCORDANCE WITH THE PROJECT MANUAL, REFER TO THE MAP FOR THE LOCATION AND USE OF TEMPORARY AND DISSECTION TAP.
 86. THE WATER MAIN SHALL BE CONSTRUCTED IN ACCORDANCE WITH THE PROJECT MANUAL, REFER TO THE MAP FOR THE LOCATION AND USE OF TEMPORARY AND DISSECTION TAP.
 87. THE WATER MAIN SHALL BE CONSTRUCTED IN ACCORDANCE WITH THE PROJECT MANUAL, REFER TO THE MAP FOR THE LOCATION AND USE OF TEMPORARY AND DISSECTION TAP.
 88. THE WATER MAIN SHALL BE CONSTRUCTED IN ACCORDANCE WITH THE PROJECT MANUAL, REFER TO THE MAP FOR THE LOCATION AND USE OF TEMPORARY AND DISSECTION TAP.
 89. THE WATER MAIN SHALL BE CONSTRUCTED IN ACCORDANCE WITH THE PROJECT MANUAL, REFER TO THE MAP FOR THE LOCATION AND USE OF TEMPORARY AND DISSECTION TAP.
 90. THE WATER MAIN SHALL BE CONSTRUCTED IN ACCORDANCE WITH THE PROJECT MANUAL, REFER TO THE MAP FOR THE LOCATION AND USE OF TEMPORARY AND DISSECTION TAP.
 91. THE WATER MAIN SHALL BE CONSTRUCTED IN ACCORDANCE WITH THE PROJECT MANUAL, REFER TO THE MAP FOR THE LOCATION AND USE OF TEMPORARY AND DISSECTION TAP.
 92. THE WATER MAIN SHALL BE CONSTRUCTED IN ACCORDANCE WITH THE PROJECT MANUAL, REFER TO THE MAP FOR THE LOCATION AND USE OF TEMPORARY AND DISSECTION TAP.
 93. THE WATER MAIN SHALL BE CONSTRUCTED IN ACCORDANCE WITH THE PROJECT MANUAL, REFER TO THE MAP FOR THE LOCATION AND USE OF TEMPORARY AND DISSECTION TAP.
 94. THE WATER MAIN SHALL BE CONSTRUCTED IN ACCORDANCE WITH THE PROJECT MANUAL, REFER TO THE MAP FOR THE LOCATION AND USE OF TEMPORARY AND DISSECTION TAP.
 95. THE WATER MAIN SHALL BE CONSTRUCTED IN ACCORDANCE WITH THE PROJECT MANUAL, REFER TO THE MAP FOR THE LOCATION AND USE OF TEMPORARY AND DISSECTION TAP.
 96. THE WATER MAIN SHALL BE CONSTRUCTED IN ACCORDANCE WITH THE PROJECT MANUAL, REFER TO THE MAP FOR THE LOCATION AND USE OF TEMPORARY AND DISSECTION TAP.
 97. THE WATER MAIN SHALL BE CONSTRUCTED IN ACCORDANCE WITH THE PROJECT MANUAL, REFER TO THE MAP FOR THE LOCATION AND USE OF TEMPORARY AND DISSECTION TAP.
 98. THE WATER MAIN SHALL BE CONSTRUCTED IN ACCORDANCE WITH THE PROJECT MANUAL, REFER TO THE MAP FOR THE LOCATION AND USE OF TEMPORARY AND DISSECTION TAP.
 99. THE WATER MAIN SHALL BE CONSTRUCTED IN ACCORDANCE WITH THE PROJECT MANUAL, REFER TO THE MAP FOR THE LOCATION AND USE OF TEMPORARY AND DISSECTION TAP.
 100. THE WATER MAIN SHALL BE CONSTRUCTED IN ACCORDANCE WITH THE PROJECT MANUAL, REFER TO THE MAP FOR THE LOCATION AND USE OF TEMPORARY AND DISSECTION TAP.