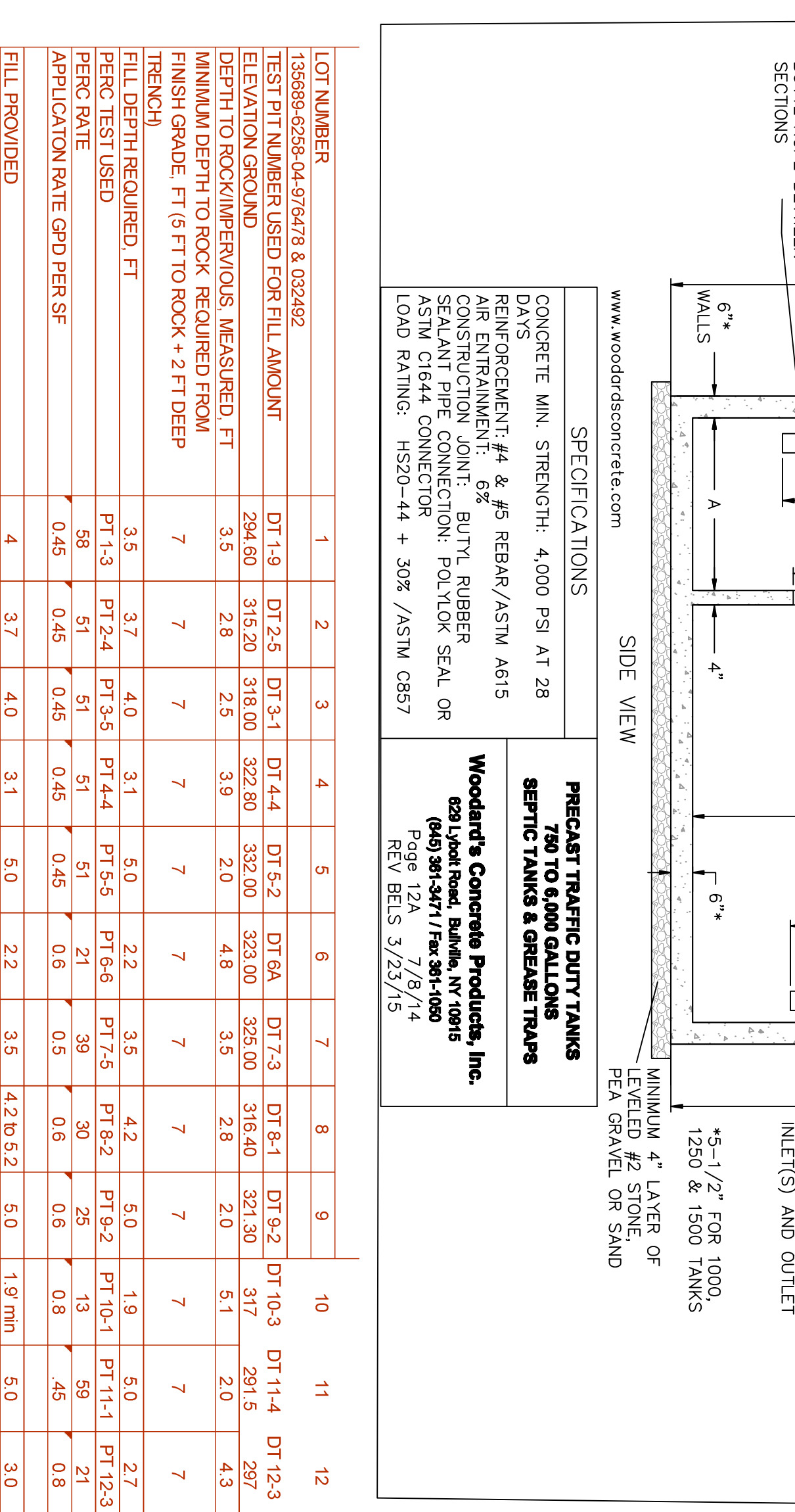
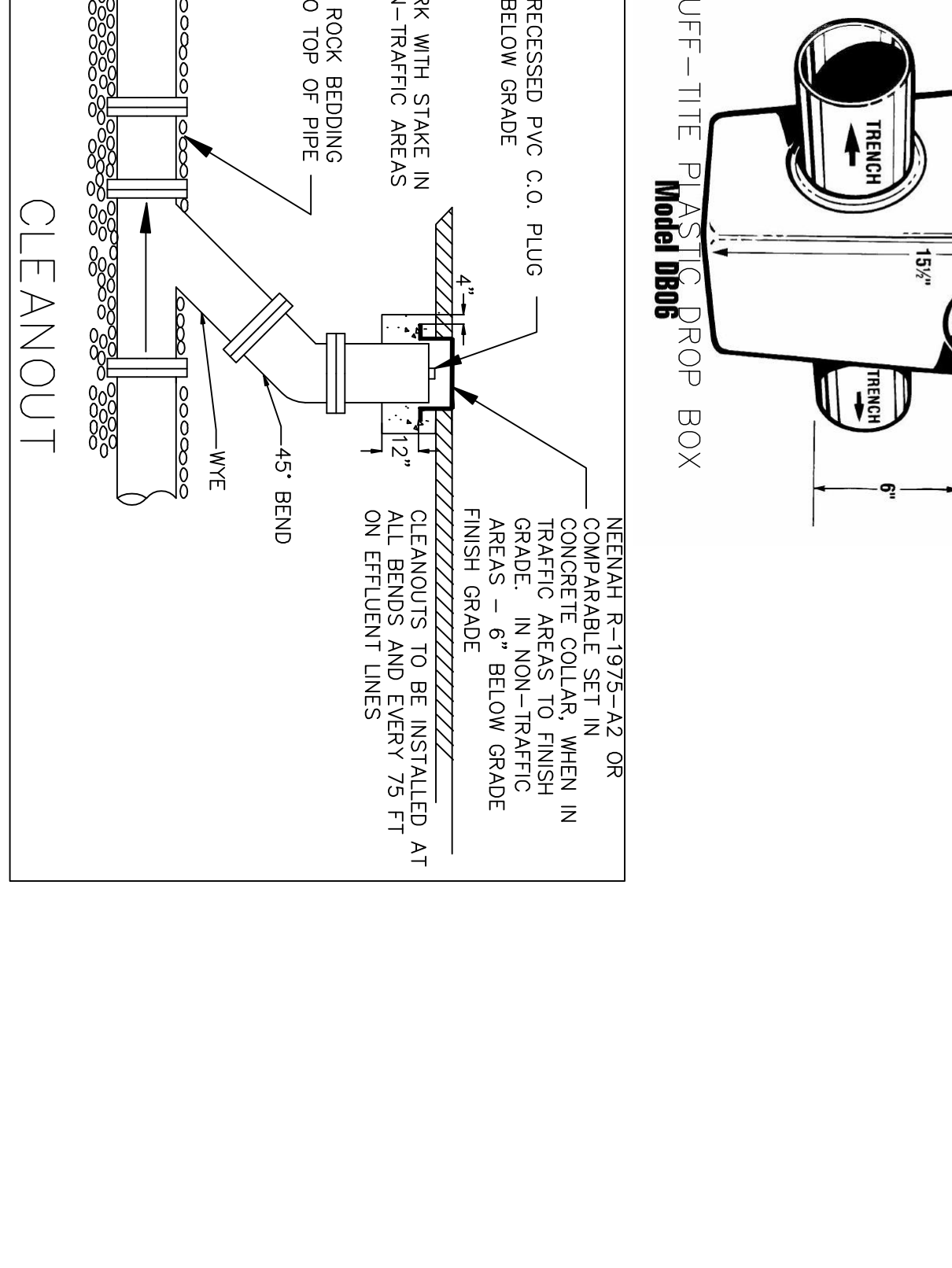
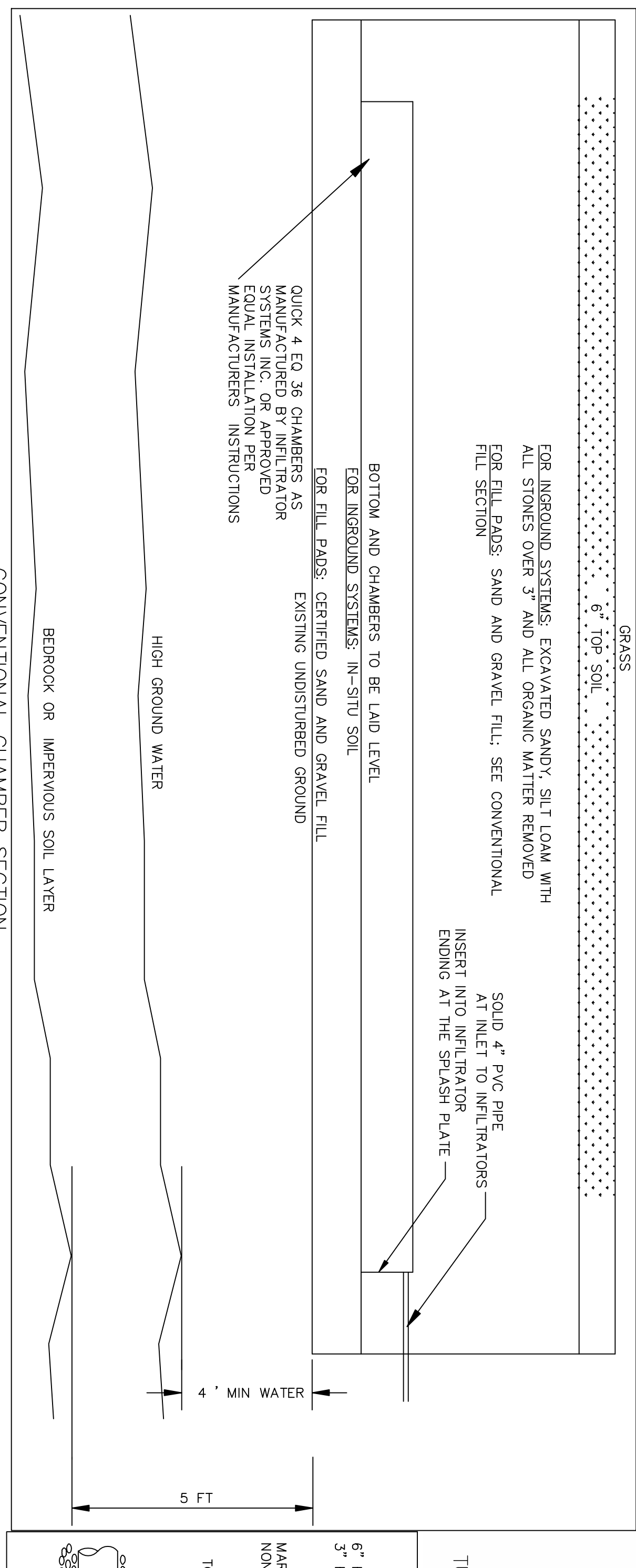
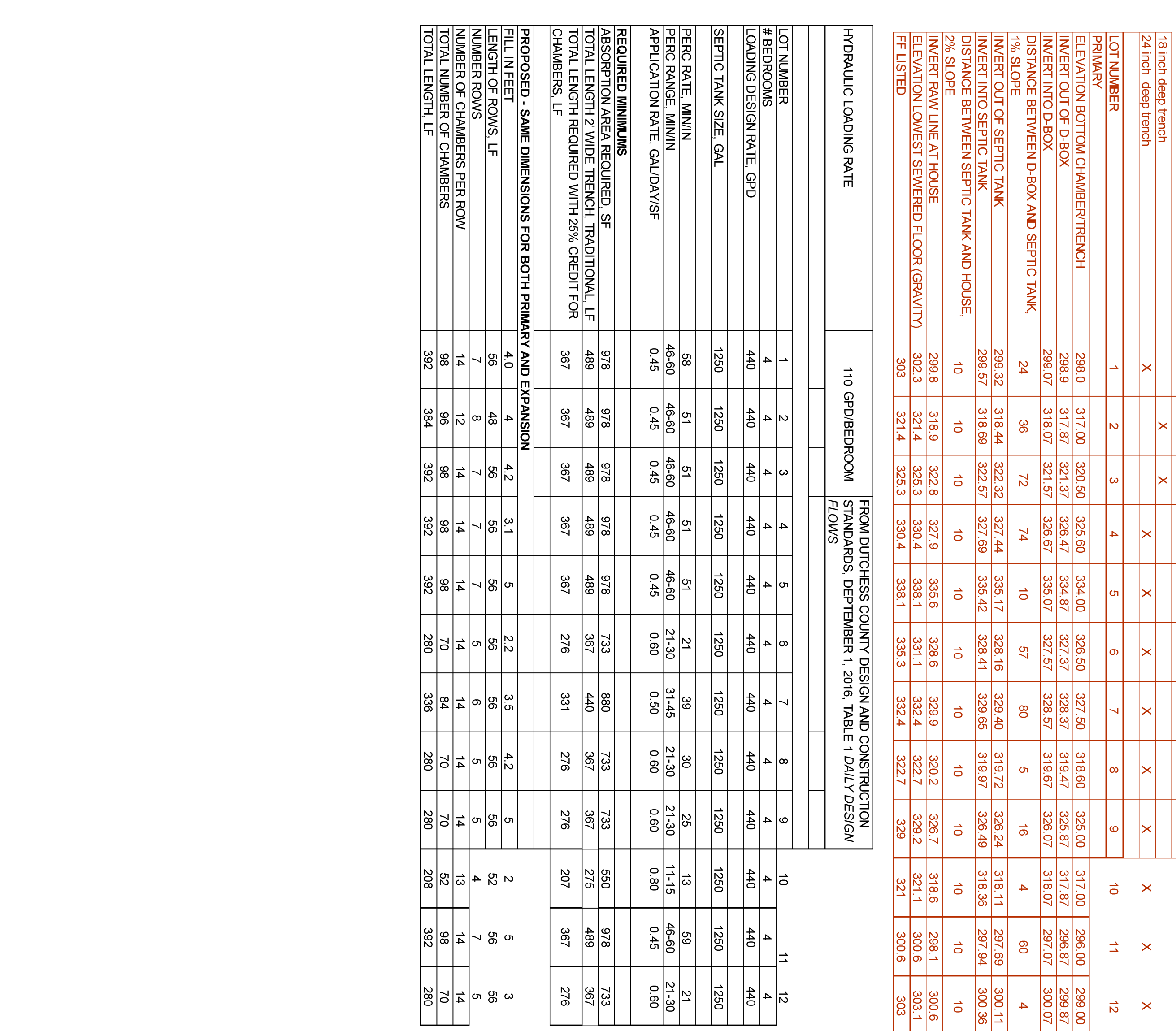
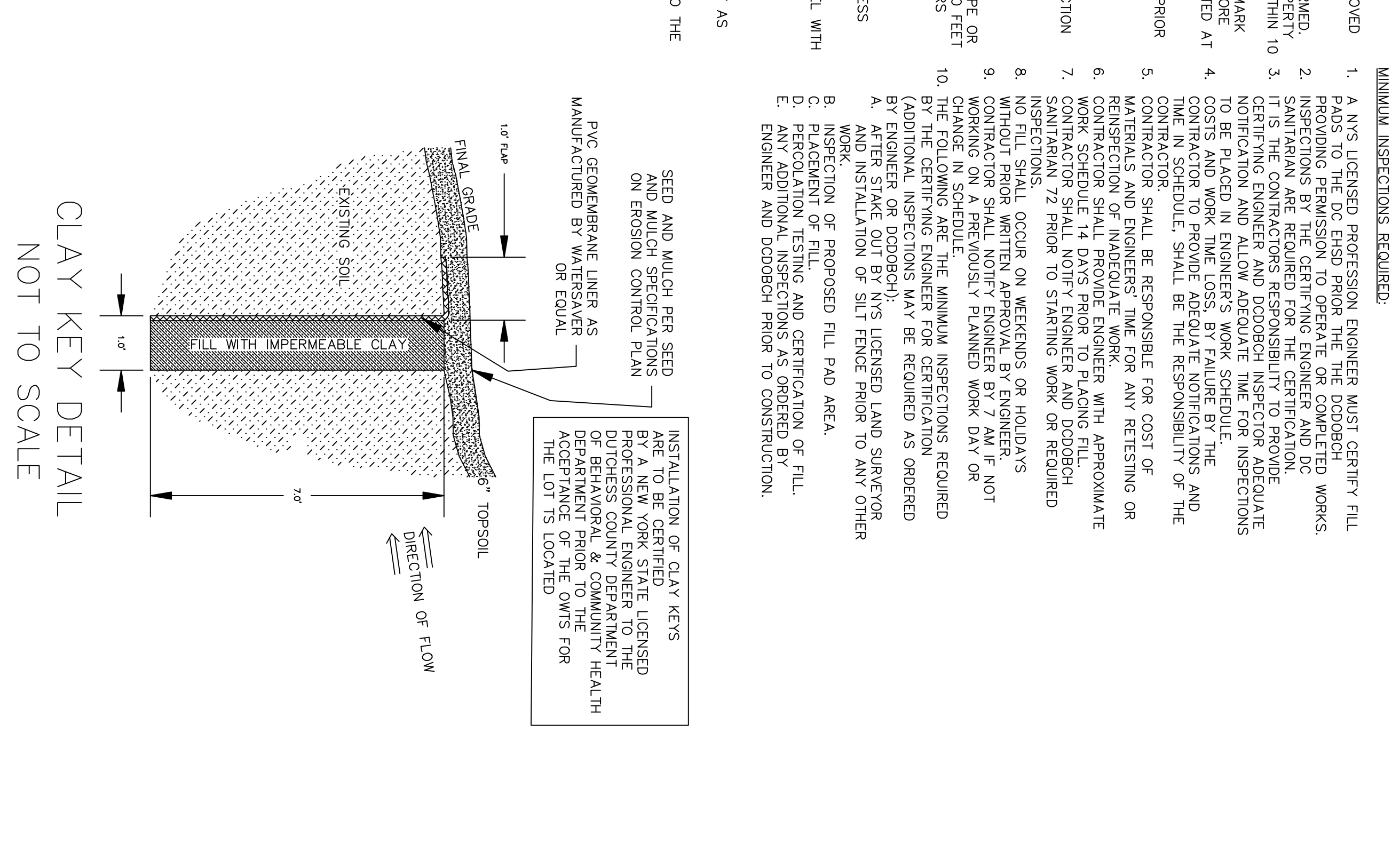


1000 & 1250 GALLON SEPTIC TANK PROPOSED FOR THIS PROJECT											
Color	L	W	H	A	B	C	D	E	F		
1000	9'-6"	4'-6"	5'-11"	42"	36"	23"	51"	24"	21"	20"	23"
1250	10'-9"	5'-11"	6'-6"	36"	36"	48"	43"	21"	18"	23"	
1000	10'-9"	5'-11"	5'-3"	41.5"	35"	38"	49.5"	24"	21"	28"	
1250	10'-9"	5'-11"	5'-3"	41.5"	35"	38"	49.5"	24"	21"	28"	
1500	10'-9"	5'-11"	5'-3"	41.5"	35"	38"	49.5"	24"	21"	28"	
2000	12'-6"	6"	7'-3"	36"	46"	31"	67"	32"	29"	46"	
2500	12'-6"	6"	7'-3"	36"	46"	31"	67"	32"	29"	46"	
3000	15'-6"	7"	7'-3"	36"	52"	31"	67"	32"	29"	46"	
3500	15'-6"	8"	7'-3"	36"	58"	31"	67"	32"	29"	46"	
4000	17'-2"	8"	7'-3"	36"	58"	31"	67"	32"	29"	46"	
5000	18'-6"	9"	7'-3"	36"	70"	31"	67"	32"	29"	46"	
6000	20'-4"	9'-6"	7'-3"	60"	70"	33"	69"	32"	30"	46"	



1000 & 1250 GALLON SEPTIC TANK PROPOSED FOR THIS PROJECT											
Color	L	W	H	A	B	C	D	E	F		
1000	9'-6"	4'-6"	5'-11"	42"	36"	23"	51"	24"	21"	20"	23"
1250	10'-9"	5'-11"	6'-6"	36"	36"	48"	43"	21"	18"	23"	
1000	10'-9"	5'-11"	5'-3"	41.5"	35"	38"	49.5"	24"	21"	28"	
1250	10'-9"	5'-11"	5'-3"	41.5"	35"	38"	49.5"	24"	21"	28"	
1500	10'-9"	5'-11"	5'-3"	41.5"	35"	38"	49.5"	24"	21"	28"	
2000	12'-6"	6"	7'-3"	36"	46"	31"	67"	32"	29"	46"	
2500	12'-6"	6"	7'-3"	36"	46"	31"	67"	32"	29"	46"	
3000	15'-6"	7"	7'-3"	36"	52"	31"	67"	32"	29"	46"	
3500	15'-6"	8"	7'-3"	36"	58"	31"	67"	32"	29"	46"	
4000	17'-2"	8"	7'-3"	36"	58"	31"	67"	32"	29"	46"	
5000	18'-6"	9"	7'-3"	36"	70"	31"	67"	32"	29"	46"	
6000	20'-4"	9'-6"	7'-3"	60"	70"	33"	69"	32"	30"	46"	



1000 & 1250 GALLON SEPTIC TANK PROPOSED FOR THIS PROJECT											
Color	L	W	H	A	B	C	D	E	F		
1000	9'-6"	4'-6"	5'-11"	42"	36"	23"	51"	24"	21"	20"	23"
1250	10'-9"	5'-11"	6'-6"	36"	36"	48"	43"	21"	18"	23"	
1000	10'-9"	5'-11"	5'-3"	41.5"	35"	38"	49.5"	24"	21"	28"	
1250	10'-9"	5'-11"	5'-3"	41.5"	35"	38"	49.5"	24"	21"	28"	
1500	10'-9"	5'-11"	5'-3"	41.5"	35"	38"	49.5"	24"	21"	28"	
2000	12'-6"	6"	7'-3"	36"	46"	31"	67"	32"	29"	46"	
2500	12'-6"	6"	7'-3"	36"	46"	31"	67"	32"	29"	46"	
3000	15'-6"	7"	7'-3"	36"	52"	31"	67"	32"	29"	46"	
3500	15'-6"	8"	7'-3"	36"	58"	31"	67"	32"	29"	46"	
4000	17'-2"	8"	7'-3"	36"	58"	31"	67"	32"	29"	46"	
5000	18'-6"	9"	7'-3"	36"	70"	31"	67"	32"	29"	46"	
6000	20'-4"	9'-6"	7'-3"	60"	70"	33"	69"	32"	30"	46"	

BERGER ENGINEERING AND SURVEYING
100 FULTON AVE.
POUGHKEEPSIE, NY 12603
(845) 471-7383
bergereng@gmail.com
PE REGISTRATION 069634 CERT 0405443 EXPIRE ON 04-30-25
LS REGISTRATION 049745 CERT 1255930 EXPIRE ON 04-30-24
COA FOR PE AND LS CERT 0018252 AND 0018253

MYERS RUN
MYERS CORNERS ROAD
TOWN OF WAPPINGER NY

Woodard's Concrete Products Inc.
601 JAMES ST., SUITE 100
POUGHKEEPSIE, NY 12603
Page 12A
REV B/E 3/23/15

MYERS RUN
MYERS CORNERS ROAD
TOWN OF WAPPINGER NY

MYERS RUN
MYERS CORNERS ROAD
TOWN OF WAPPINGER NY

MYERS RUN
MYERS CORNERS ROAD
TOWN OF WAPPINGER NY

MYERS RUN
MYERS CORNERS ROAD
TOWN OF WAPPINGER NY

MYERS RUN
MYERS CORNERS ROAD
TOWN OF WAPPINGER NY

MYERS RUN
MYERS CORNERS ROAD
TOWN OF WAPPINGER NY

MYERS RUN
MYERS CORNERS ROAD
TOWN OF WAPPINGER NY