

NOT RELEASED FOR CONSTRUCTION

LATEST DA/PC DA22-014/PC21-020

DRAWN BY: TSS

CHECKED BY: MLW

[illegible][illegible]

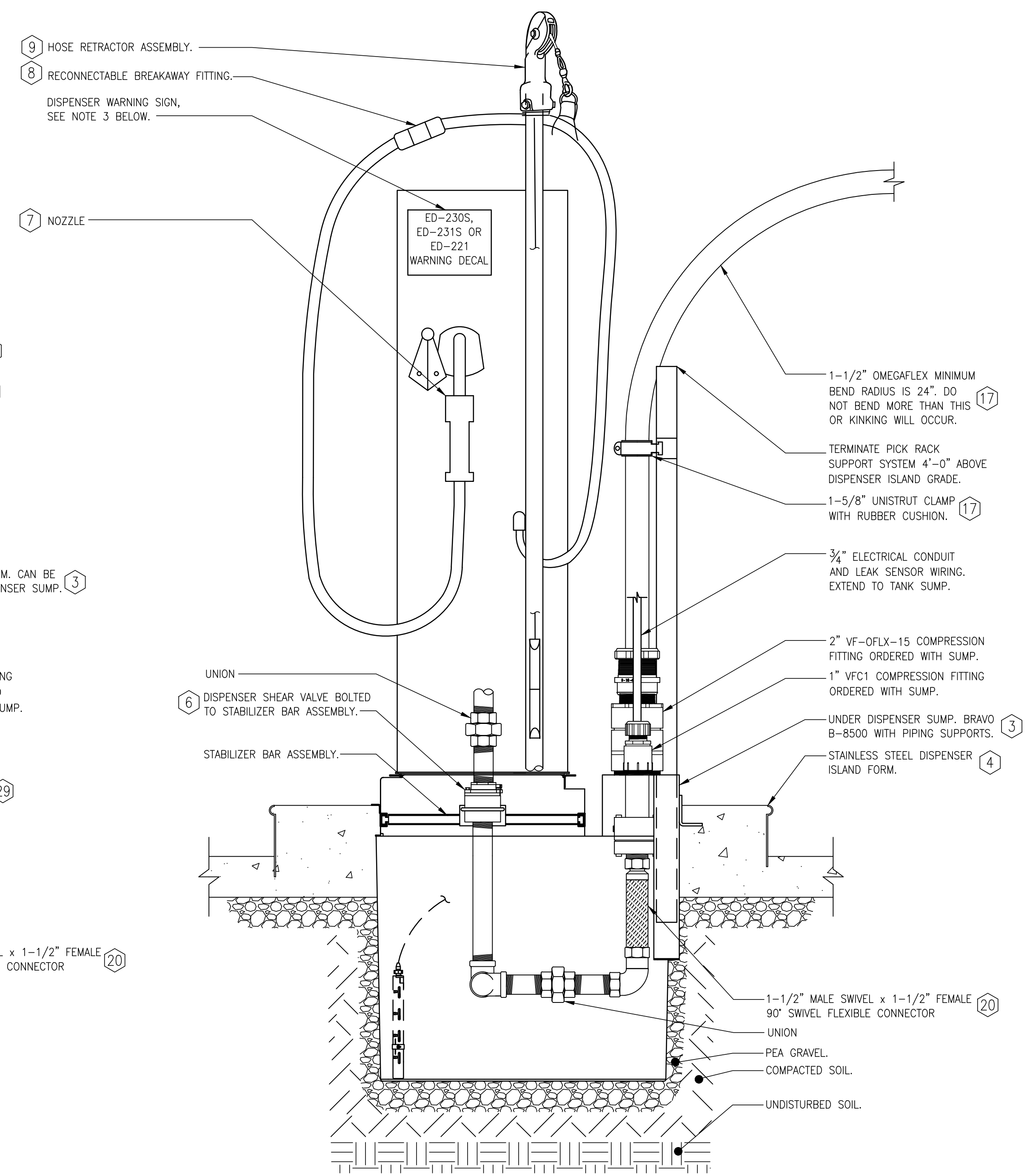
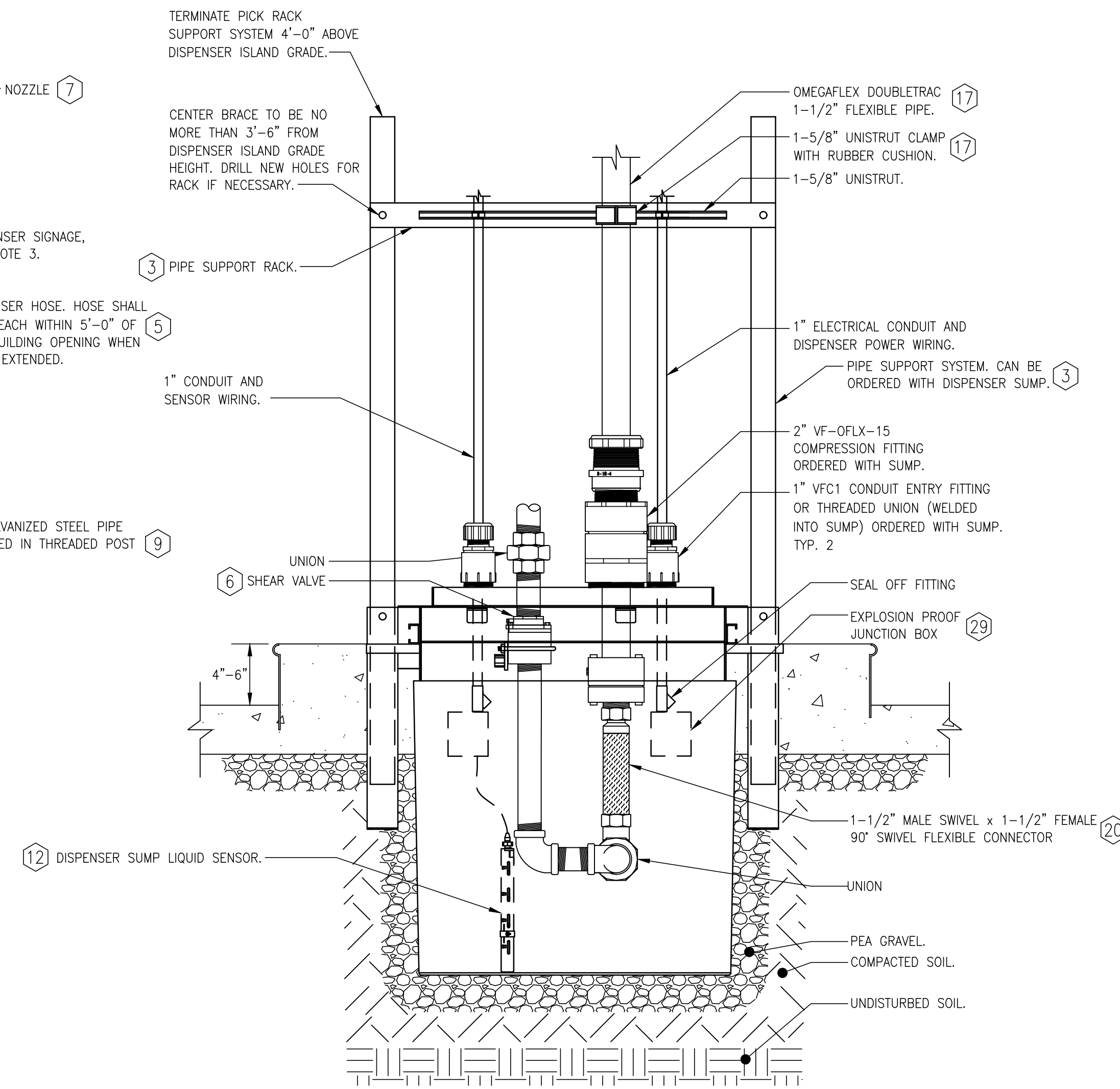
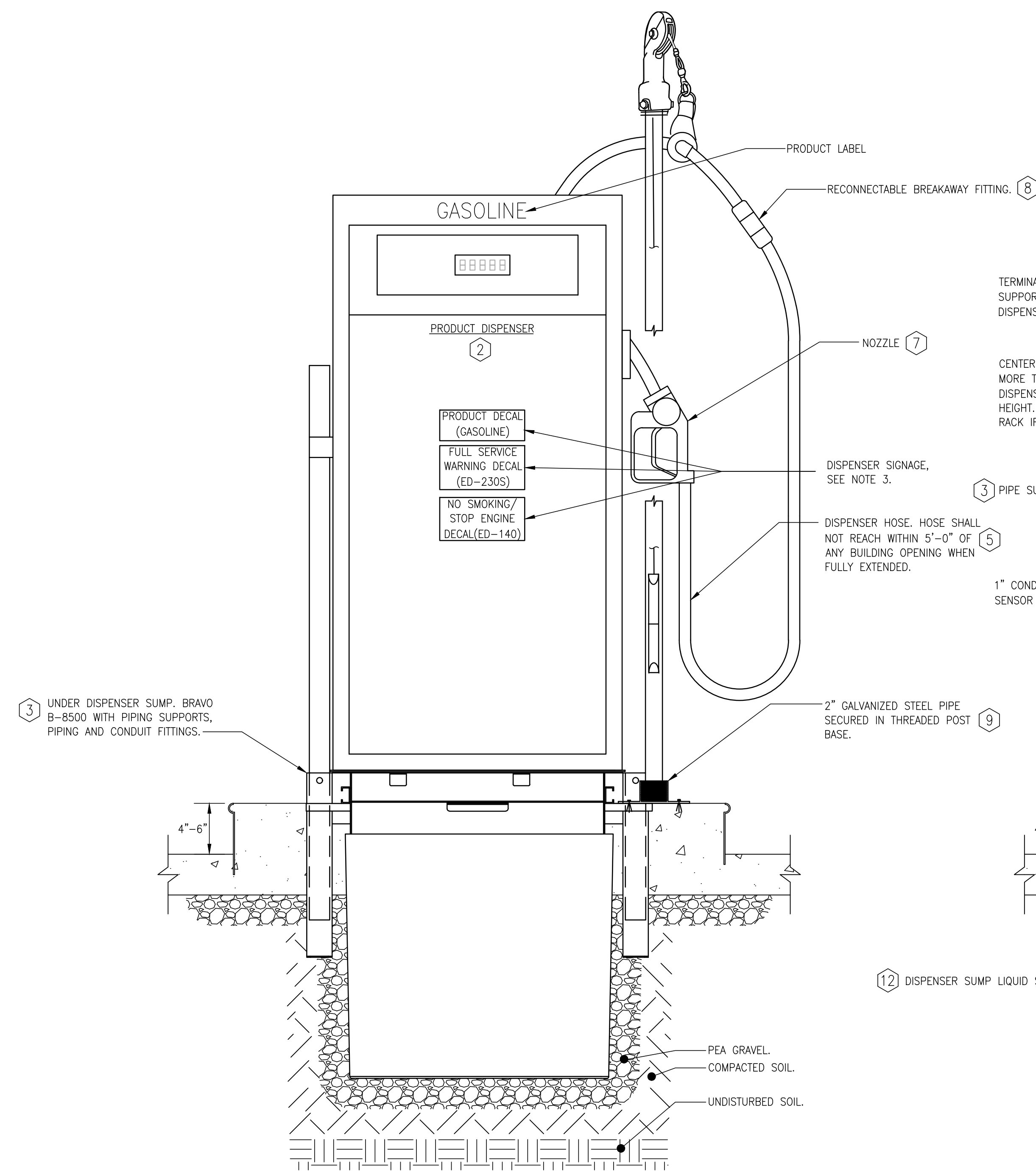
| | |
|--------------------|-------------|
| PROJECT NO. | 20-20192.02 |
|--------------------|-------------|

DATE 06/15/2022

| |
|---------------------|
| SHEET TITLE |
| FUEL STORAGE SYSTEM |
| MISCELLANEOUS |
| DETAILS |

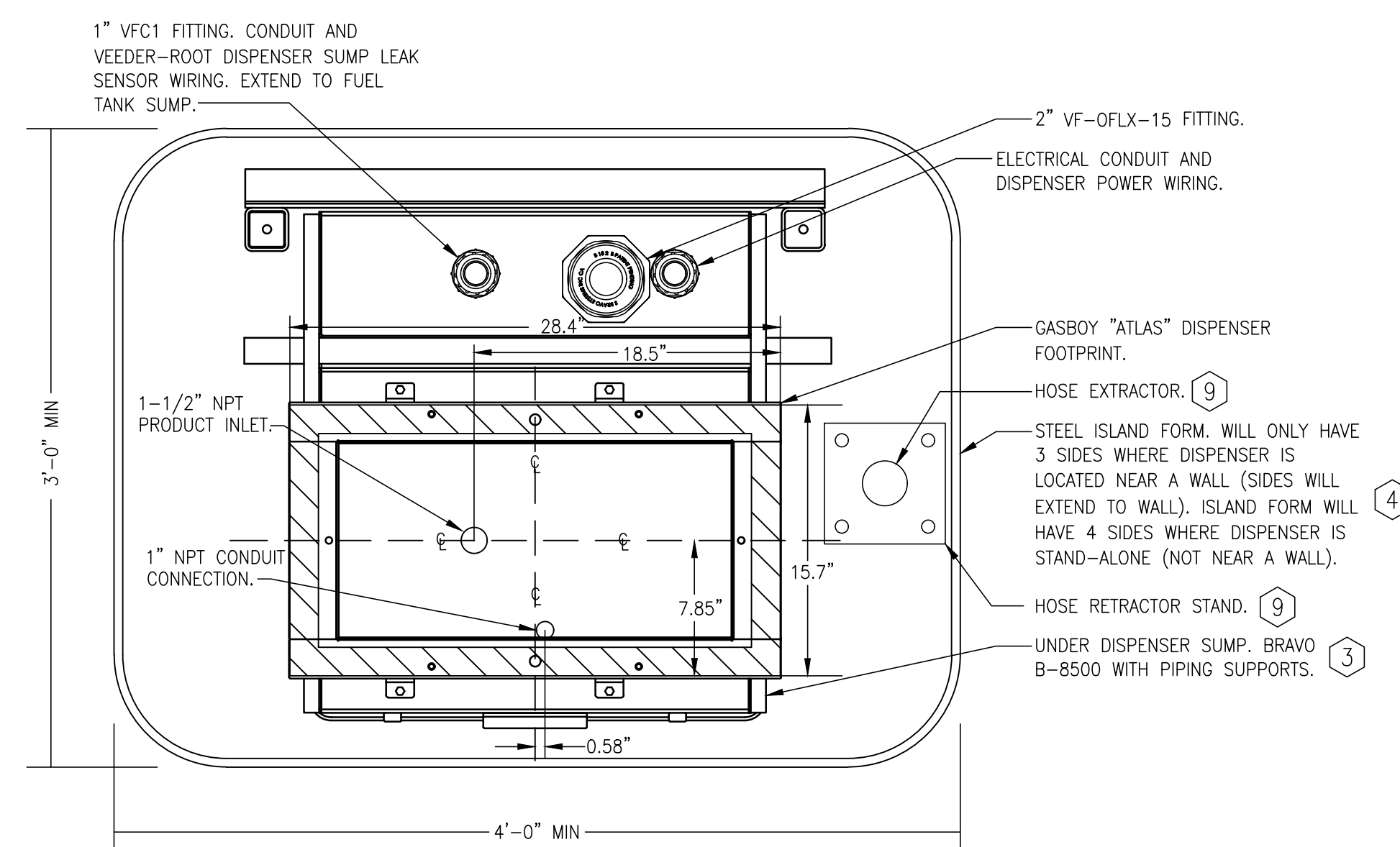
SHEET NO.

FS3.0



NOTE:

1. DISPENSER NOT SHOWN FOR CLARITY.
2. PERSONS INSTALLING OMEGAFLEX PIPING MUST BE TRAINED AND CERTIFIED BY OMEGAFLEX.
3. PROVIDE THE FOLLOWING DISPENSER SIGNAGE ON LOCATIONS INDICATED: WARNING DECAL PART NUMBER ED-230F, ED-231S or ED-221 SELF SERVE. SIGNAGE MAY BE PURCHASED FROM EMPRO PRODUCTS COMPANY (800-752-0675, orders@emproproducts.com).

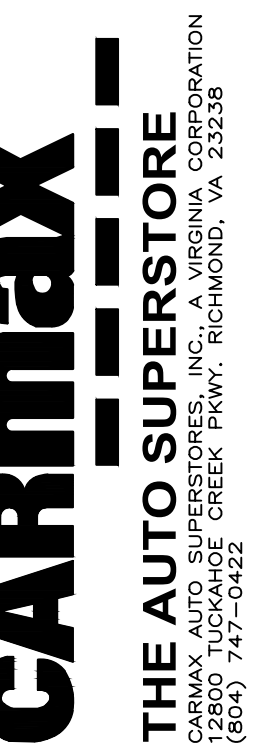


NOT RELEASED FOR CONSTRUCTION

TEST DA/PC DA22-014/PC21-020

DRAWN BY: TSS

CHECKED BY: MLW

[illegible]

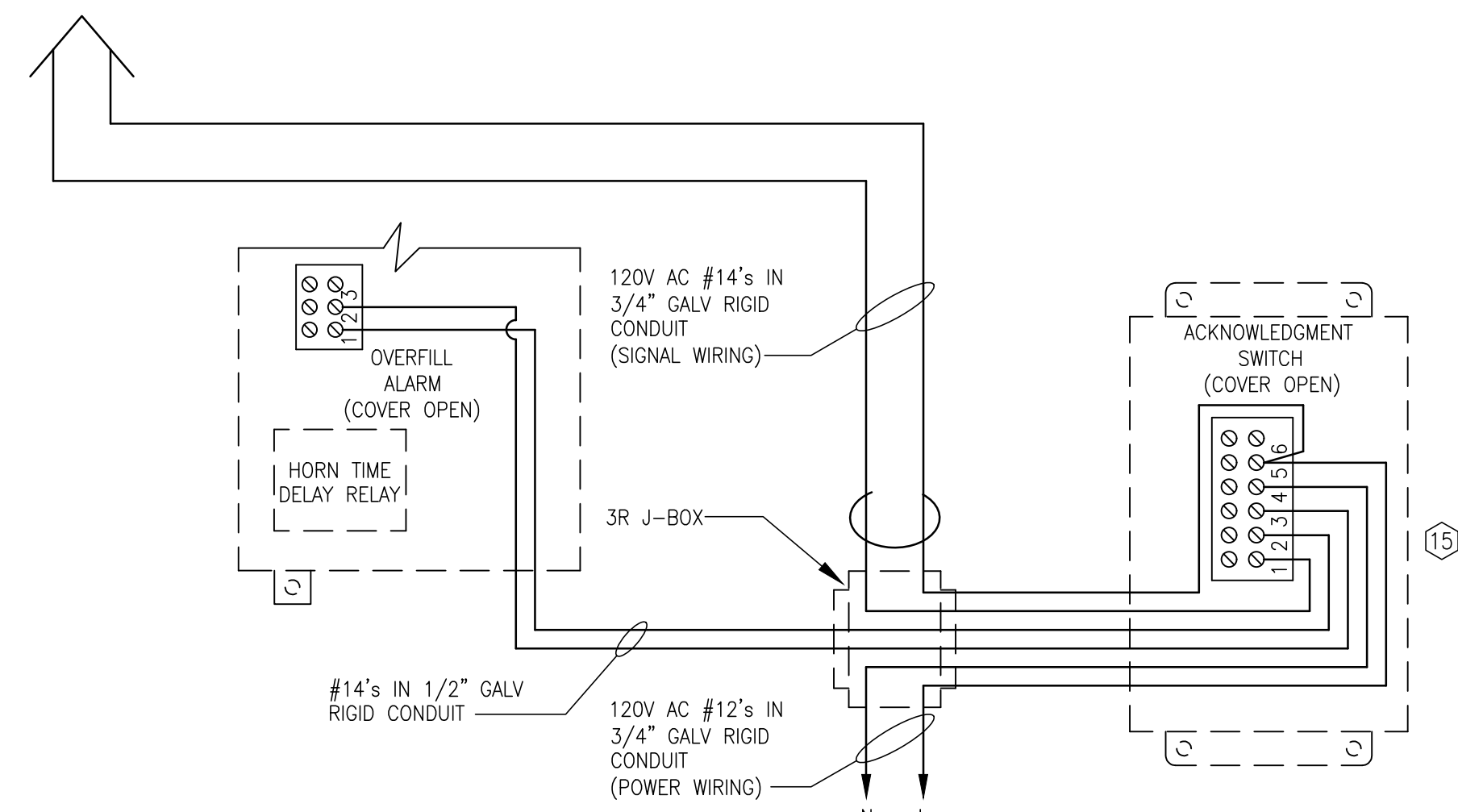
PROJECT NO. 20-20192.02

06/15/2022

SHEET TITLE

FUEL DISPENSER INSTALLATION DETAILS

SHEET NO.



INSIDE THE MODULE AREA OF A FOUR THE TLS-450 PLUS CONSOLE AND THE EXPANSION BOX, ANY COMBINATION OF UP TO BOTH MODULES MAY BE INSTALLED, 1/0 MODULES PROVIDE WIRING TERMINALS FOR THE CONNECTION OF EQUIPMENT INSTALLED IN NON-HAZARDOUS LOCATIONS. THE USM (UNIVERSAL SENSOR MODULE) PROVIDES WIRING TERMINALS FOR THE CONNECTION OF INTRINSICALLY SAFE APPARATUS.

THE ELECTRONICS LOCATED IN THE BARRIER CIRCUIT OF THE USM MODULE FORMS AN INTRINSICALLY SAFE ENERGY LIMITED SYSTEM. PROBE AND SENSORS CONNECTED TO THE OUTPUT TERMINALS OF THE USM MODULE ARE CONSIDERED INTRINSICALLY SAFE APPARATUS AND ARE APPROVED FOR USE IN CLASS 1, GROUP D HAZARDOUS (CLASSIFIED) LOCATIONS.



(1) ALL VEEDER-ROOT (V-R) CONSOLES AND COMPONENTS SHALL BE INSTALLED BY V-R CERTIFIED TECHNICIANS, PER V-R INSTRUCTIONS. SEE PROJECT SPECIFICATIONS.

(2) THE SPECIFICATIONS FOR "VEEDER-ROOT SYSTEM SETUP AND CONFIGURATION REQUIREMENTS" AS WELL AS "POST SYSTEM CHECKLIST" ALL LEAK SENSORS AND CRITICAL FLOW LEVEL ALARMS SHALL BE DISPLAYED ON THE V-R CONSOLE AND SAVED IN THE ALARM HISTORY.

(3) V-R INSTALLATION KIT SHALL BE PROVIDED WITH INVENTORY PROBE. MATCH INSTALLATION KIT TO PROBE FLOW SIZE (2", 3", OR 4").

(4) TESTING: FLOW-TYPE LEAK SENSORS (SUMP, TANK INTERSTITIAL, ETC.) TESTED BY INVERTING (10 SECONDS, MINIMUM).



FS5.0 SCALE: NOT TO SCALE

NOTES:

1. THIS SCHEMATIC IS GENERIC. THE NUMBER AND TYPE OF SENSORS AND PROBES WILL BE DIFFERENT FOR EACH SPECIFIC INSTALLATION.
2. WIRING TO PROBE AND SENSORS MUST SHIELDED REGARDLESS OF CONDUIT MATERIAL OR APPLICATION. SHIELDED CABLE MUST BE RATED LESS THAN 100 PICOFARAD PER FOOT, AND BE MANUFACTURED WITH A MATERIAL SUITABLE FOR THE ENVIRONMENT (OIL & GAS RESISTANT); SEE VEEDER-ROOT INSTALLATION INSTRUCTIONS.
3. LABEL OR COLOR CODE ALL FIELD WIRING TO ENSURE POLARITY.
4. LABEL ALL ALARM JUNCTION BOXES, MONITOR JUNCTION BOXES AND PANELS.
5. PROVIDE PLASTIC PROTECTIVE BUSHING AT ALL CONDUIT ENTRANCES TO PANELS, JUNCTION BOXES & WIRING.
6. PANEL POWER TO BE OBTAINED FROM A PROTECTED PANEL. PROVIDE NEW 20 AMP, 1-POLE BREAKER. TERMINATE CHASSIS AND BARELY GROUND WIRE TO PANEL GROUND BUS. SEE ELECTRICAL DRAWING.
7. CONDUIT TO BE RIGID GALVANIZED.
8. MONITORING WIRES SHALL BE A SINGLE RUN OF WIRE WITH NO SPICES.
9. THE NEW VEEDER-ROOT CONSOLE SHALL BE PROVIDED WITH THE FOLLOWING MODULE:
 - LOW VOLTAGE DIM MODULE

SEE SHEET FS2.0 FOR DETAILED INFORMATION ON SPECIFIC COMPONENTS.

① DRAWING IS SCHEMATIC ONLY.

② ONLY VEEDER-ROOT PROBE AND SENSOR WIRING SHOWN. SEE ELECTRICAL DRAWINGS FOR POWER WIRING INFORMATION AND ADDITIONAL DETAILS.

DS = DISPENSER SUMP SENSOR
BS = TANK BOX SENSOR
INV = INVENTORY PROBE
IS = TANK INTERSTITIAL SENSOR
A = "BELDEN" NO. 88760
JACKETED CABLE
J = NEMA 4X JUNCTION BOX
P = DISPENSER - PULSER WIRING



FS5.0 SCALE: NOT TO SCALE

**LATEST DA/PC** DA22-014/PC21-020

DRAWN BY: TSS

CHECKED BY: MLW

REVISIONS

[illegible]

CARMAX

THE AUTO SUPERSTORE
CARMAX AUTO SUPERSTORE, INC., A VIRGINIA CORPORATION
10000 WOODBURN CREEK PKWY., RICHMOND, VA 23238
(800) 747-0422
(804) 747-0422

PROJECT NO. 20-20192.02

| | |
|-------------|------------|
| DATE | 06/15/2022 |
|-------------|------------|

SHEET TITLE

VEEDER-ROOT TLS-450
AUTOMATIC TANK
GAUGE SCHEMATIC
AND NOTES

SHEET NO. **FS5.0**