



# PRELIMINARY ELEVATIONS

**MOVING & STORAGE OF WAPPINGER (797074)**



ADVERTISING & MARKETING ASSOCIATES, INC. ARCHITECTURAL DESIGN & FACILITY IMAGING

©2022 U-HAUL® INTERNATIONAL • ALL RIGHTS RESERVED



# MOVING & STORAGE OF WAPPINGER (797074)

1 Stage Door Rd. Fishkill, NY 12524





**MOVING & STORAGE OF WAPPINGER (797074)**

1 Stage Door Rd. Fishkill, NY 12524

IMP EXCEEDS SUSTAINABLE LEED  
STANDARDS BY PROVIDING  
SUPERIOR R-VALUE INSULATION  
FOR GREATER THERMAL  
EFFICIENCY

ARTISTIC USE OF MATERIAL  
CREATES AN EXTRUDED LYRICAL  
ARTICULATED DESIGN ELEMENT

STRUCTURAL EMPHASIS ON MAIN CORNERS  
PROVIDING ARTICULATION TO THE BUILDING





# MOVING & STORAGE OF WAPPINGER (797074)

1 Stage Door Rd. Fishkill, NY 12524



**WEST ELEVATION**

Scale: 1" = 20'



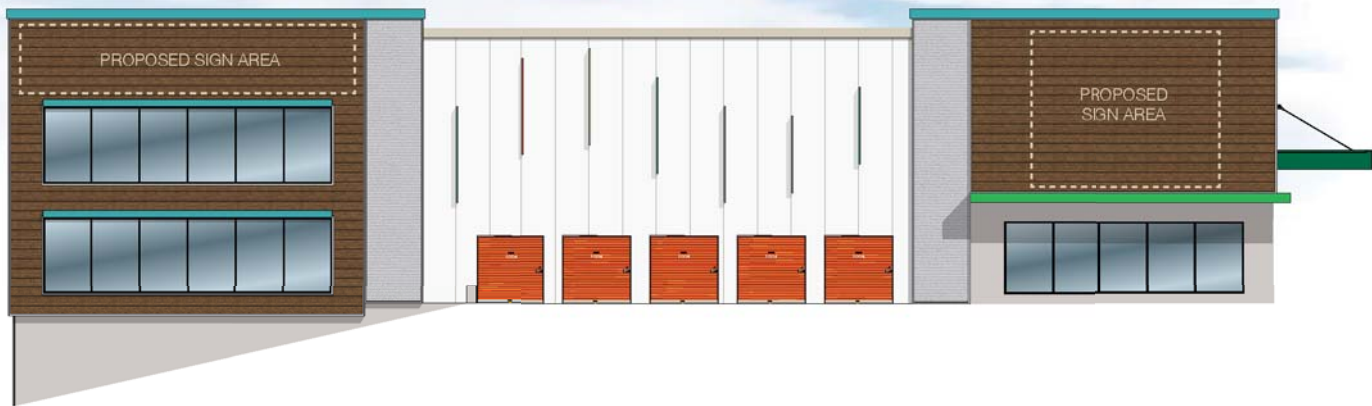
**EAST ELEVATION**

Scale: 1" = 20'



# MOVING & STORAGE OF WAPPINGER (797074)

1 Stage Door Rd. Fishkill, NY 12524



**SOUTH ELEVATION**

Scale: 1" = 20'



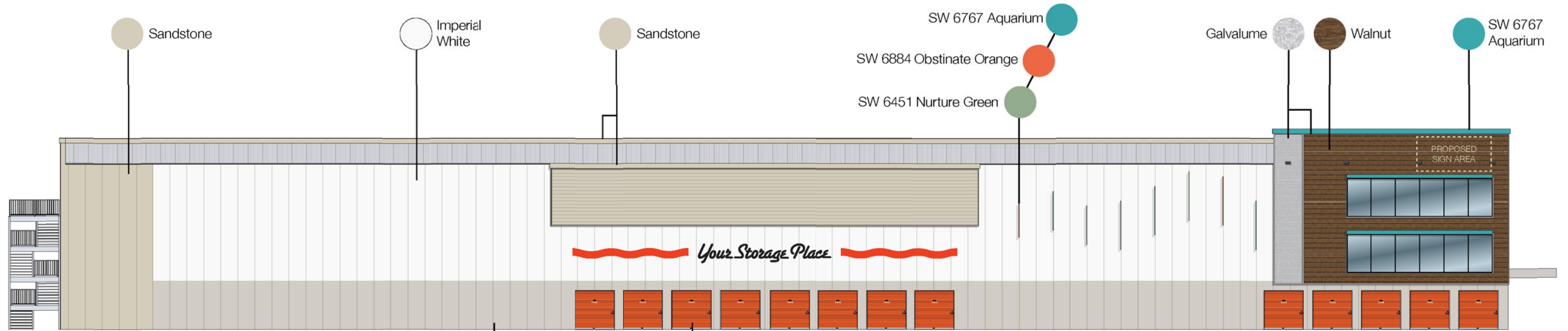
**NORTH ELEVATION**

Scale: 1" = 20'



# MOVING & STORAGE OF WAPPINGER (797074)

1 Stage Door Rd. Fishkill, NY 12524



## WEST ELEVATION

Scale: 1" = 20'



## EAST ELEVATION

Scale: 1" = 20'

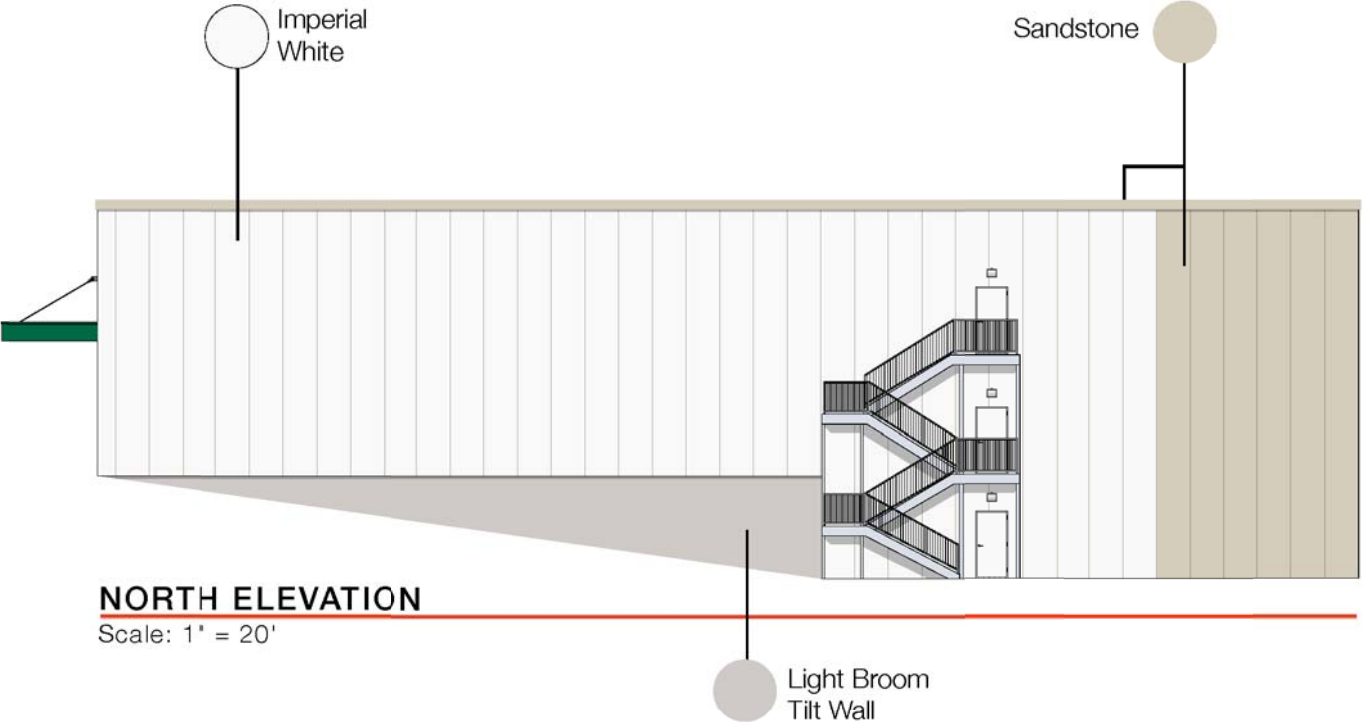
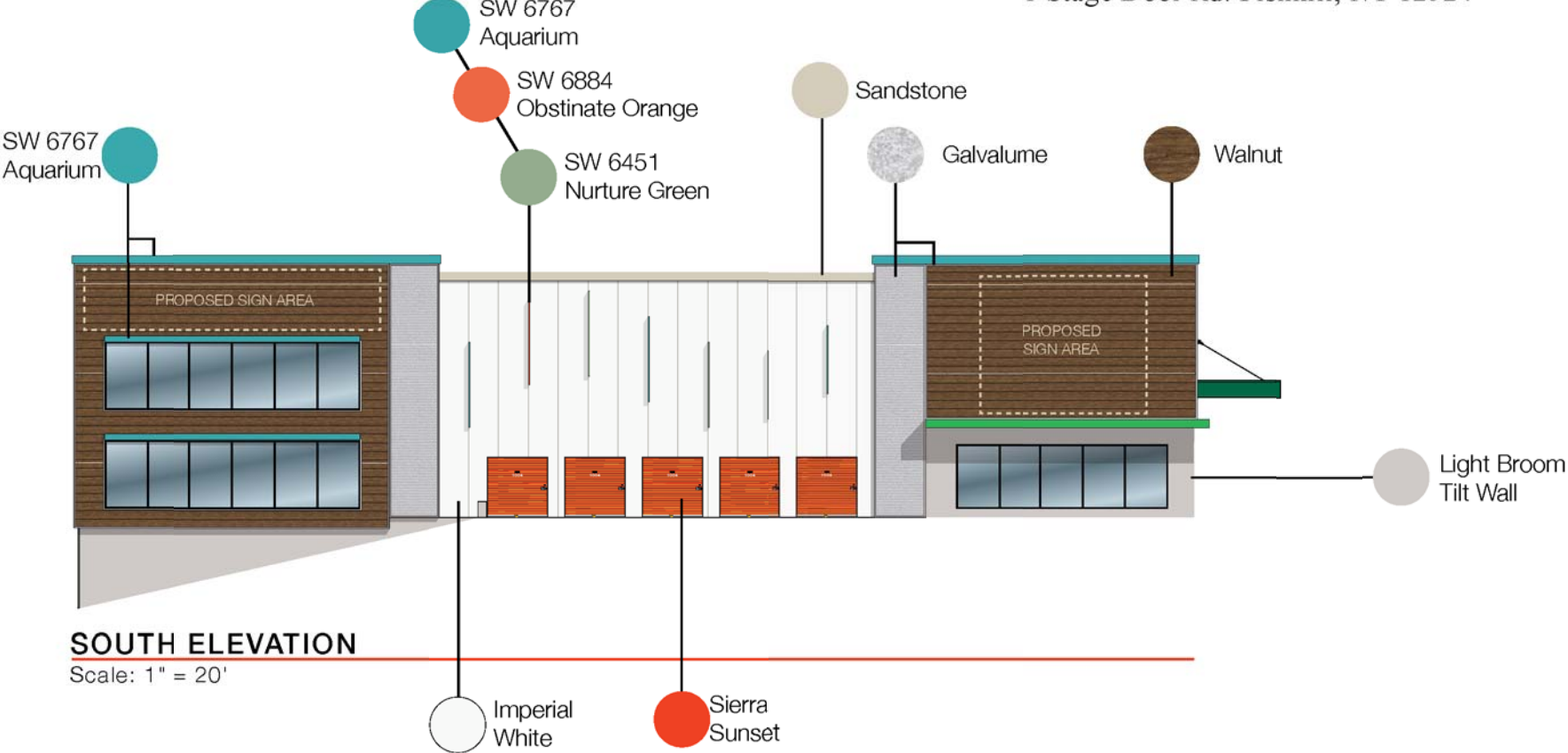
U-Haul Green  
Light Broom  
Tilt Wall





# MOVING & STORAGE OF WAPPINGER (797074)

1 Stage Door Rd. Fishkill, NY 12524



# MOVING & STORAGE OF WAPPINGER (797074)

1 Stage Door Rd. Fishkill, NY 12524

CHANGE IN MATERIALS  
TO PROVIDE  
VISUAL SEPARATION TO  
THE ELEVATION

ARTISTIC USE OF MATERIAL  
CREATES AN EXTRUDED LYRICAL  
ARTICULATED DESIGN ELEMENT

ARCHITECTURAL FENESTRATION TO  
ENHANCE RETAIL UNIFORMITY  
IN THE AREA.



**WEST ELEVATION**  
Scale: 1" = 20'

ARCHITECTURAL DETAIL

CHANGE IN MATERIALS TO PROVIDE  
VISUAL SEPARATION TO THE  
ELEVATION

PANELING DESIGN USED TO LOWER THE  
OVERALL LOOK OF THE BUILDING

ARTISTIC USE OF MATERIAL  
CREATES AN EXTRUDED LYRICAL  
ARTICULATED DESIGN ELEMENT



**EAST ELEVATION**  
Scale: 1" = 20'

PROJECTION CREATES ARCHITECTURAL  
INTEREST ABOVE STORAGE: LOAD/UNLOAD AREA

WOOD GRAIN CARRIAGE DOORS  
PROVIDE A WELCOMING ENTRANCE  
FOR CUSTOMERS





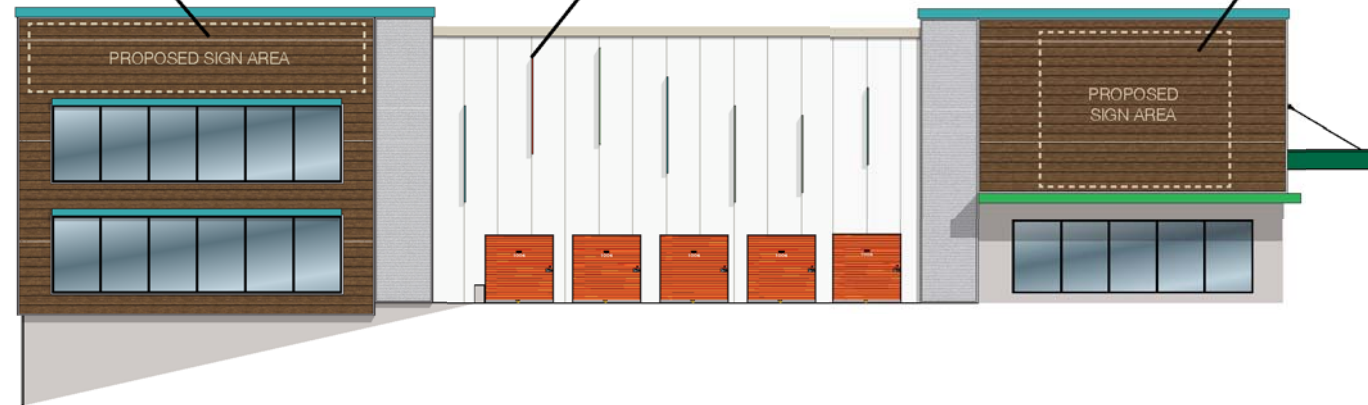
# MOVING & STORAGE OF WAPPINGER (797074)

1 Stage Door Rd. Fishkill, NY 12524

ARCHITECTURAL POP OUTS  
PROVIDES ARTICULATION TO  
THE ELEVATION

ARTISTIC USE OF MATERIAL  
CREATES AN EXTRUDED LYRICAL  
ARTICULATED DESIGN ELEMENT

STRUCTURAL EMPHASIS ON MAIN CORNERS  
PROVIDING ARTICULATION TO THE BUILDING



**SOUTH ELEVATION**

Scale: 1" = 20'

CHANGE IN COLOR TO PROVIDE A  
VISUAL SEPARATION TO THE  
ELEVATION



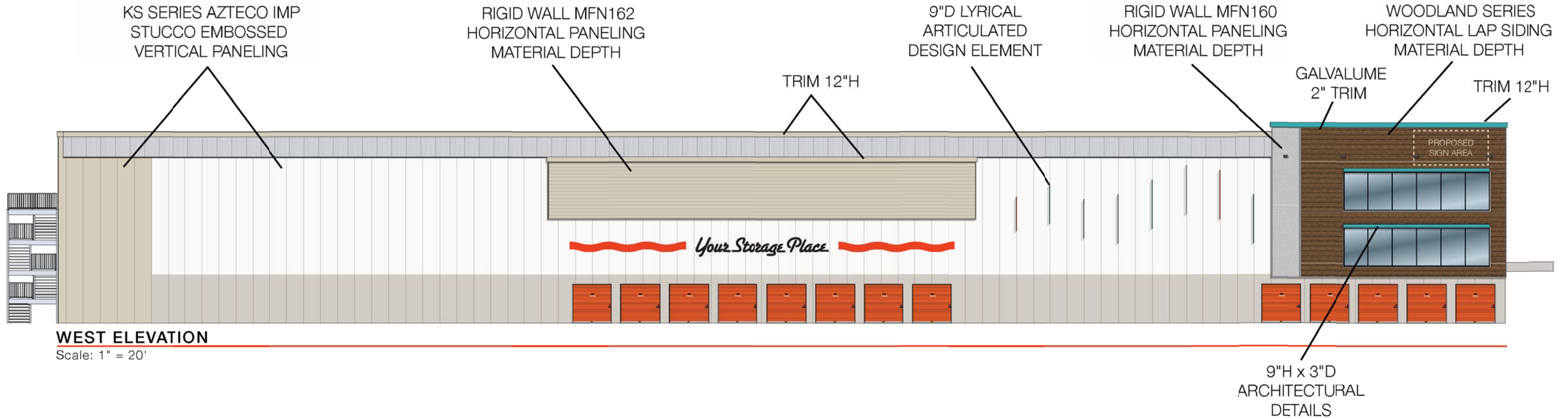
**NORTH ELEVATION**

Scale: 1" = 20'



# MOVING & STORAGE OF WAPPINGER (797074)

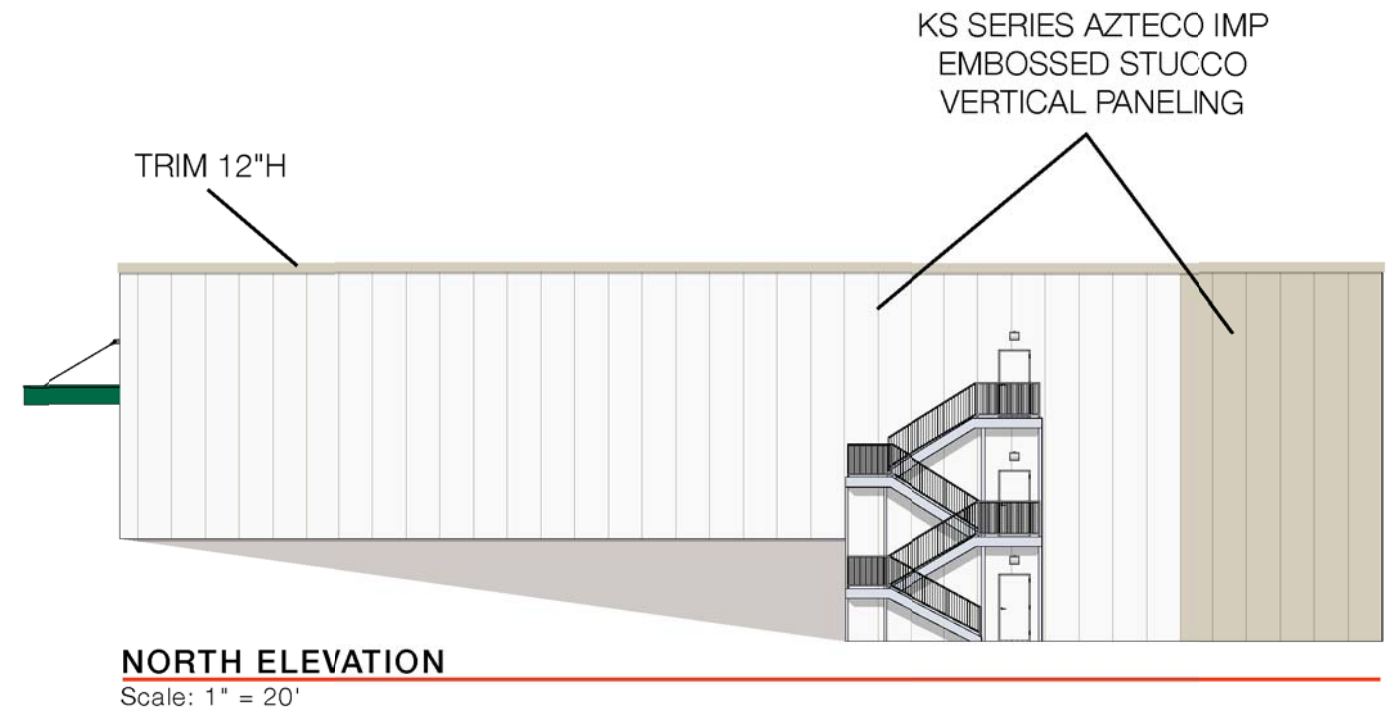
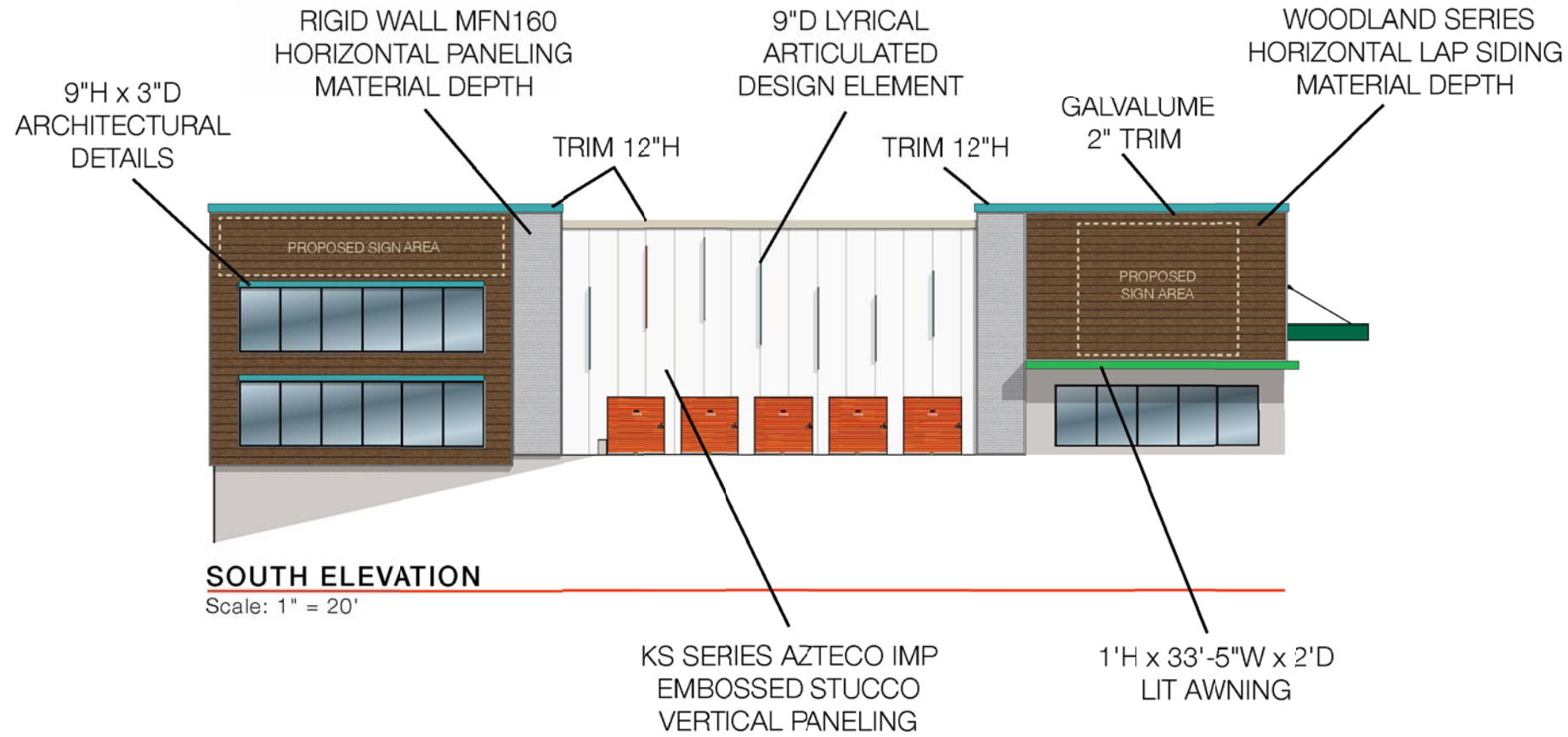
1 Stage Door Rd. Fishkill, NY 12524





# MOVING & STORAGE OF WAPPINGER (797074)

1 Stage Door Rd. Fishkill, NY 12524



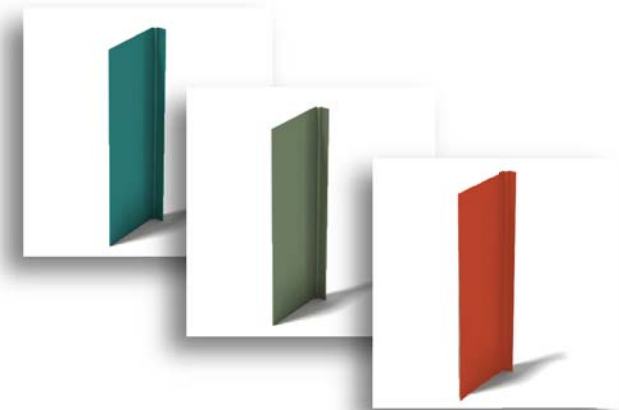
# KS Series

## WALL PANEL SYSTEMS

KS Series insulated metal wall panels provide unique aesthetics through a wide range of profiles while delivering supreme thermal performance. Adjustable module widths can integrate for distinct architectural flair. KS Series panels can be customized with trimless ends and pre-formed corners to provide a clean, finished appearance.



# 9"D Lyrical Articulated Design Element



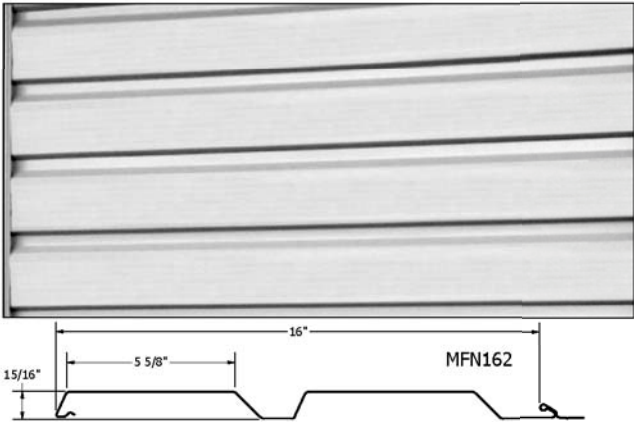
# Rigid Wall II

Rigid Wall II profiles are available in widths of 8", 12", or 16". The panels are 15/16" deep and provide dramatic shadow lines with their 1 5/8" wide ribs. The panels utilize the Wind-Lok™ concealed fastening system and offer uninterrupted vertical or horizontal sight lines.



Woodland Series  
HORIZONTAL LAP SIDING  
EMBOSSED WALNUT

16"w panel - MFN162



16"w panel - MFN160

