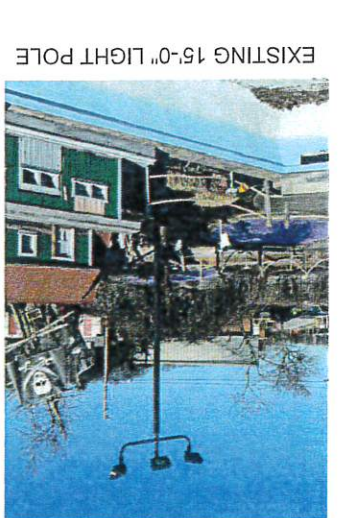
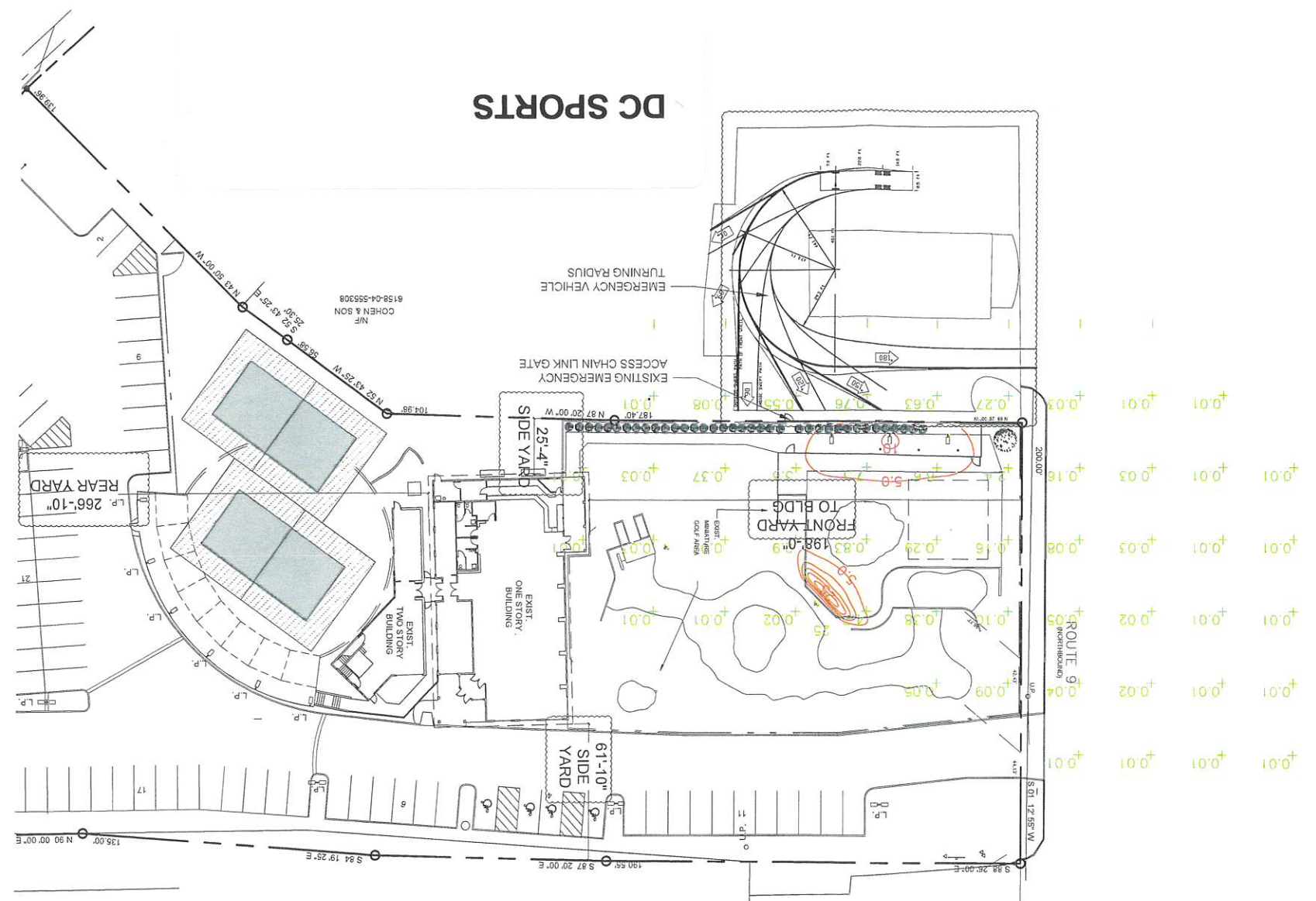


PHOTOMETRIC LIGHT CALCULATIONS  
 BY DAVID WHITMAN P.E.



A-9 SITE PLAN  
 1"=30'-0"

BASE SURVEY INFORMATION FROM MAURI ASSOCIATES ARCHITECTS PC PROJECT NUMBER 01-62-121 SITE PLAN DATED JUNE 28, 2012



NOTES

- EXISTING SITE LIGHTING TO REMAIN.
- EXISTING PARKING/PAVING TO REMAIN.
- EXISTING DRAINAGE TO REMAIN.

LIGHTING NOTE  
 EXISTING LED LIGHT FIXTURES ON POLES TO BE ADJUSTED / ANGLED DOWN TO DIRECT LIGHT TOWARD GRADE  
 030524

McComack Lisium  
 181 CHURCH STREET  
 Poughkeepsie, New York 12601  
 PHONE 845-452-2248 FAX 845-452-7572  
 ARCHITECTURE PLANNING INTERIORS

PROJECT  
 DC SPORTS  
 1430 US-9  
 WAPPINGERS FALLS, NY 12590

DRAWING  
 SITE PLAN  
 ENVIRONMENTAL RESOURCE MAPPER  
 SITE PHOTOS

DESIGNER  
 HM 24016  
 PROJECT NUMBER

CHECKED BY  
 RVP 02-29-24  
 DATE

DRAWING NUMBER  
 S2

No.	REVISION/SUBMISSION	DATE
1	REVISIONS PER P.L. BRD	030524
2	ZBA	031924