

**AHARONIAN & ASSOCIATES, INC. ARCHITECTS**

T: 401-232-5010  
F: 401-232-5080

WWW.ARCH-ENG.COM

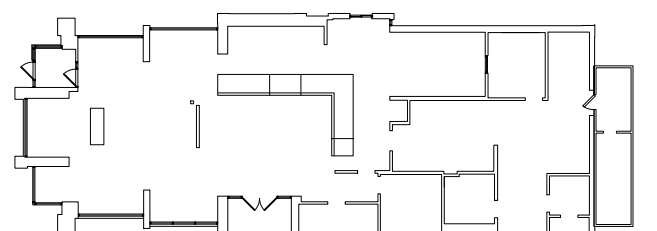
**DISCLAIMER**

OWNERSHIP AND USE OF DOCUMENTS, DRAWINGS AND SPECIFICATIONS ARE INSTRUMENTS OF PROFESSIONAL SERVICE AND SHALL REMAIN THE PROPERTY OF THE ARCHITECT. THESE DOCUMENTS ARE NOT TO BE USED, IN WHOLE OR IN PART, FOR ANY OTHER PROJECTS OR PURPOSES OR BY ANY OTHER PARTIES THAN THOSE PROPERLY AUTHORIZED BY CONTRACT WITHOUT THE EXPRESS WRITTEN AUTHORIZATION OF THE ARCHITECT.

**PRELIMINARY  
NOT FOR CONSTRUCTION**

**FOR REVIEW**

REVISIONS:		
NUMBER	REMARKS	DATE



KEYPLAN

PROJECT TITLE:  
**DUNKIN'**  
PC# 353482

1491 ROUTE 9  
WAPPINGERS FALLS, NY 12590  
DUTCHESS COUNTY

DRAWING TITLE:  
**SCHEMATIC SITE  
PLAN & DETAILS**

DATE: NOV 14, 2024	PROJ. NO.: 24102
DRAWN BY: AS	CHECKED BY: JB

DRAWING NUMBER:

**A0.1**

QTY	LOCATION	OVERALL DIMENSIONS	LETTERS	AREA
1	SITE (X MONUMENT)	VERIFY IN FIELD	VIF	VIF
1	SITE (X DIRECTIONAL)	VERIFY IN FIELD	VIF	VIF

**KEYED PLAN NOTES**

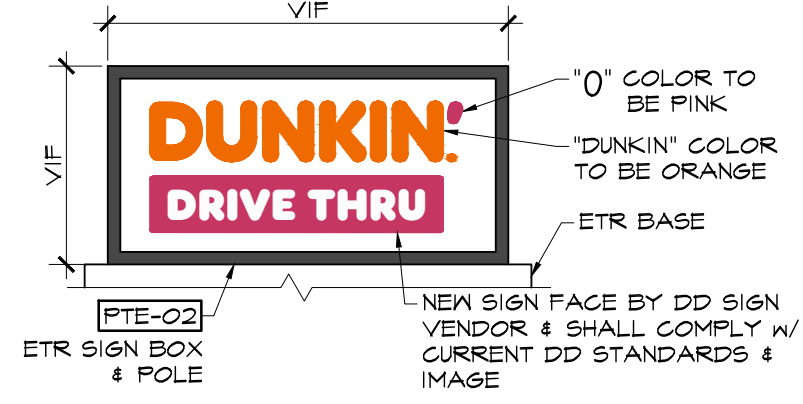
- 1) PAINT ETR DUMPSTER FENCE, ENCLOSE & SURROUNDING OUTHOUSE [ PTE-01 ]
- 2) ETR CONCRETE PAD & GROUND LOOP.
- 3) PATCH / REPAIR ALL SITE AS REQ'D TO MATCH EXIST IN ALL AREAS OF DEMOLITION.
- 4) SIGN VENDOR TO PROVIDE "SEE YOU SOON" FACE ON ETR DIRECTIONAL SIGN. SEE 5/AO.1.
- 5) ETR DRIVE THRU LIMIT BAR. PAINT POST [ PTE-04 ] & CANOPY PAINT [ PTE-13 ]
- 6) ETR BOLLARD. PROVIDE BOLLARD COVER - SEE NATIONAL ACCTS (TYP).
- 7) "DRIVE THRU LANE GRAPHIC". SEE 5/AO.1.
- 8) "TRAFFIC ARROW BEFORE D/T LANE" [ TP-01 ] SEE 5/AO.1.
- 9) "DRIVE THRU START LANE GRAPHIC". SEE 5/AO.1.
- 10) "TYPICAL TRAFFIC ARROW" [ TP-01 ] COORD FINAL LOCATIONS W/ OWNER. SEE 5/AO.1.
- 11) D/T STACK & MENU BOARD CAMERA MTD TO BUILDING. COORD FINAL LOCATION W/ OWNER.
- 12) ETR DRIVE THRU WINDOW LOCATION.
- 13) SIGN VENDOR TO PROVIDE NEW FACES ON ETR MONUMENT SIGN. SEE 4/AO.1.
- 14) DIGITAL MENU BOARD. SEE 6/AO.1.
- 15) ORDER CANOPY W/ BUILT-IN CONFIRMATION DISPLAY & SPEAKER. SEE 6/AO.1.
- 16) REMOVE EXISTING MENU BOARD & SPEAKER - SALVAGE ELEG AS REQ'D FOR REUSE.

**SITE NOTES:**

- 1) CLEAN & PREP ALL SURFACES AS REQ'D PER PAINT MANUF SPECIFICATIONS PRIOR TO PAINTING. VERIFY CONDITION OF EXISTING MATERIALS - REPAIR / REPLACE MATERIALS TO MATCH EXISTING AS REQ'D. APPLY PAINT IN STRICT ACCORDANCE WITH PAINT MANUF SPECIFICATIONS. COORDINATE W/ FRANCHISEE FOR EXTENT OF WORK.
- 2) SITE & SIGN DETAILS SHOWN ARE SCHEMATIC ONLY. COORDINATE LOCATIONS IN FIELD W/ FRANCHISEE & LANDLORD.
- 3) CUT/PATCH/REPAIR EXISTING PAVEMENT AS REQ'D. COORDINATE W/ FRANCHISEE & LANDLORD FOR EXTENT OF WORK.
- 4) SEALCOAT & RESTRIPE EXISTING PARKING LOT. COORDINATE W/ FRANCHISEE & LANDLORD FOR EXTENT OF WORK. SEE 5/AO.1 FOR STRIPING DETAILS.
- 5) POWERWASH EXISTING SIDEWALKS, CURBS & CONC PADS. CLEAN, MEND & REMULCH ANY EXISTING LANDSCAPING. COORDINATE W/ FRANCHISEE & LANDLORD FOR EXTENT OF WORK.
- 6) PROVIDE NEXTGEN BOLLARD COVERS ON ALL ETR BOLLARDS ON DD SITE. COORD W/ NATIONAL ACCOUNTS FOR ORDERING. GC TO ENSURE ALL ETR BOLLARDS ARE PROPERLY SET & CONSULT W/ FRANCHISEE & LANDLORD IF ADDITIONAL WORK IS REQ'D.
- 7) PATCH SITE & LANDSCAPING AS REQ'D AT REMOVED MENU BOARD OR LIMIT BAR LOCATIONS IF APPLICABLE.
- 8) SEE A7.0 - A7.2 FOR MASTER FINISH SCHEDULES.

**MONUMENT SIGN NOTES**

- 1) FACE DESIGN STANDARD. ITT PAN FORMED & EMBOSSED CLEAR. SOLAR GRADE POLYCARBONATE. SECOND SURFACE VINYL. DUNKIN' TO BE 1/2" EMBOSSED. ALL OTHER FACE & REGISTER MARK ARE FLAT.
- 2) VINYL COLORS TO BE: DD ORANGE 3M #3650-5202; DD MAGENTA 3M #3650-1511.
- 3) ILLUMINATION: EXISTING INTERNALLY ILLUMINATED. SIGN VENDOR TO VERIFY IF LIGHTING IS LED & REPLACE W/ LEDS AS REQ'D.
- 4) SEE NATIONAL ACCOUNTS FOR ORDERING INFORMATION.
- 5) FRANCHISEE MAY OPT TO PROVIDE NEW SIGNS IN LIEU OF REPLACING SIGN FACES - COORDINATE WITH FRANCHISEE PRIOR TO FABRICATION.
- 6) SEE A7.0 - A7.2 FOR FINISH INFORMATION.



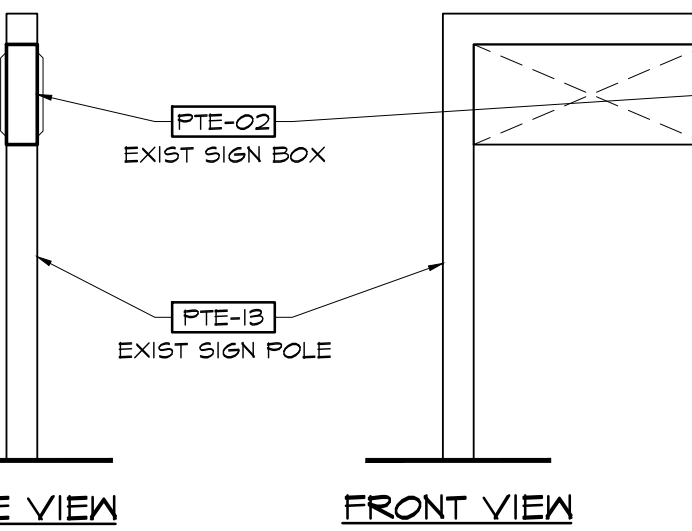
**4 MONUMENT SIGN DETAIL**  
SCALE: 1/4" = 1'-0"

**DIRECTIONAL SIGN NOTES**

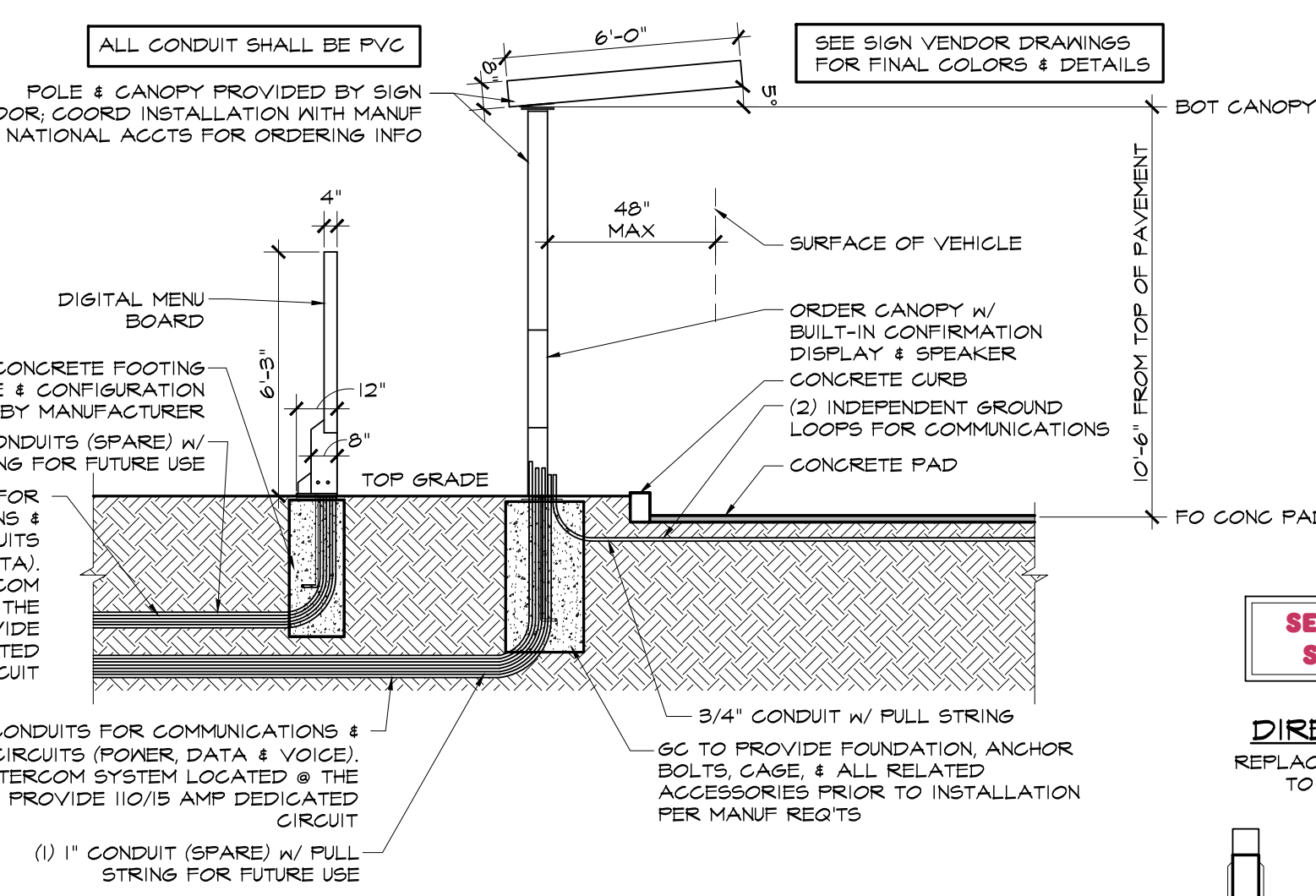
- 1) SEE INSPIRE EXTRANET FOR COMPLETE INFORMATION & DETAILS.
- 2) AREA OF SIGN = EXISTING TO REMAIN.
- 3) LIGHTING = EXISTING INTERNALLY ILLUMINATED. SIGN VENDOR TO VERIFY IF LIGHTING IS LED & REPLACE W/ LEDS AS REQ'D.
- 4) REFACE & PAINT ALL EXISTING DIRECTIONAL SIGNS ON SITE UNO.



**DIRECTIONAL SIGN FACES**  
REPLACE EXISTING SIGN FACES AS REQ'D TO COMPLY WITH NEW DD IMAGE

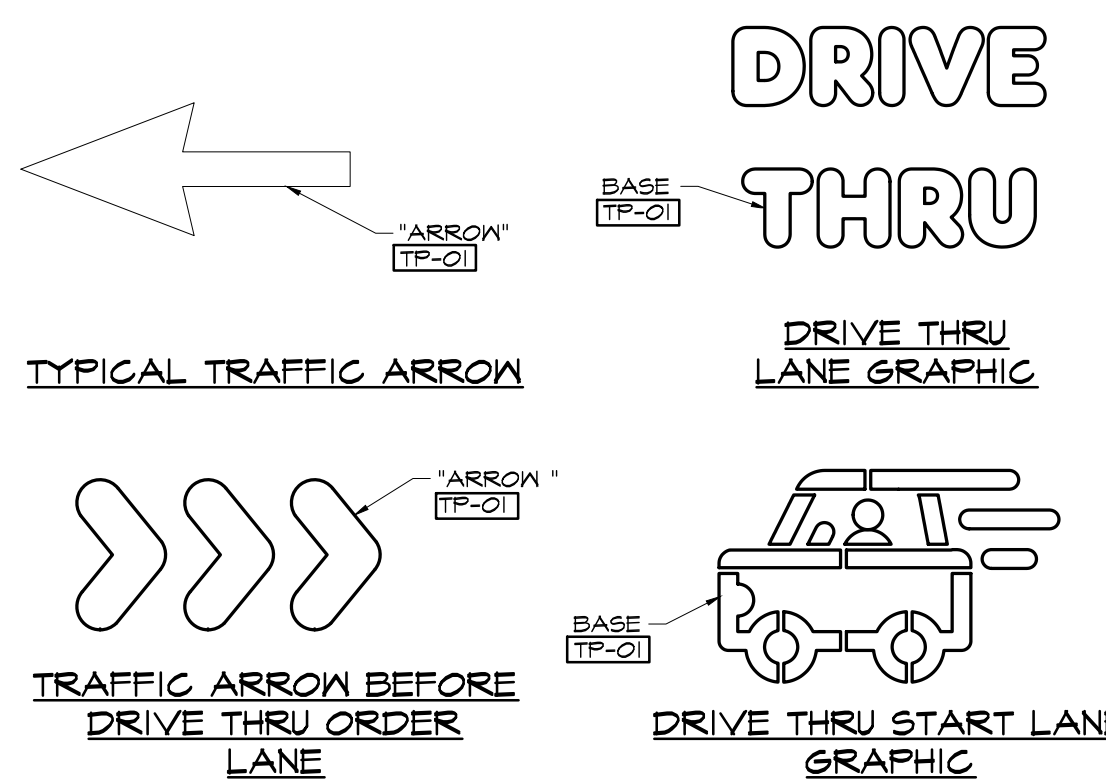


**3 DIRECTIONAL SIGN DETAILS**  
SCALE: 1/2" = 1'-0"

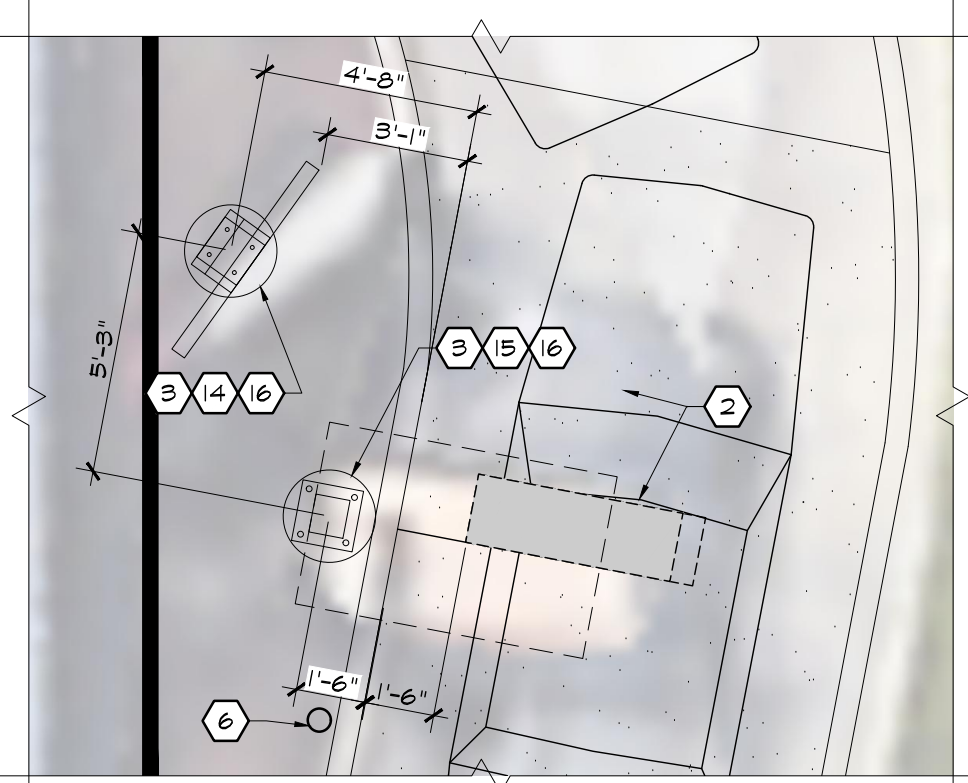


**6 MENU BOARD & SPEAKER TOWER DETAIL**  
NOT TO SCALE

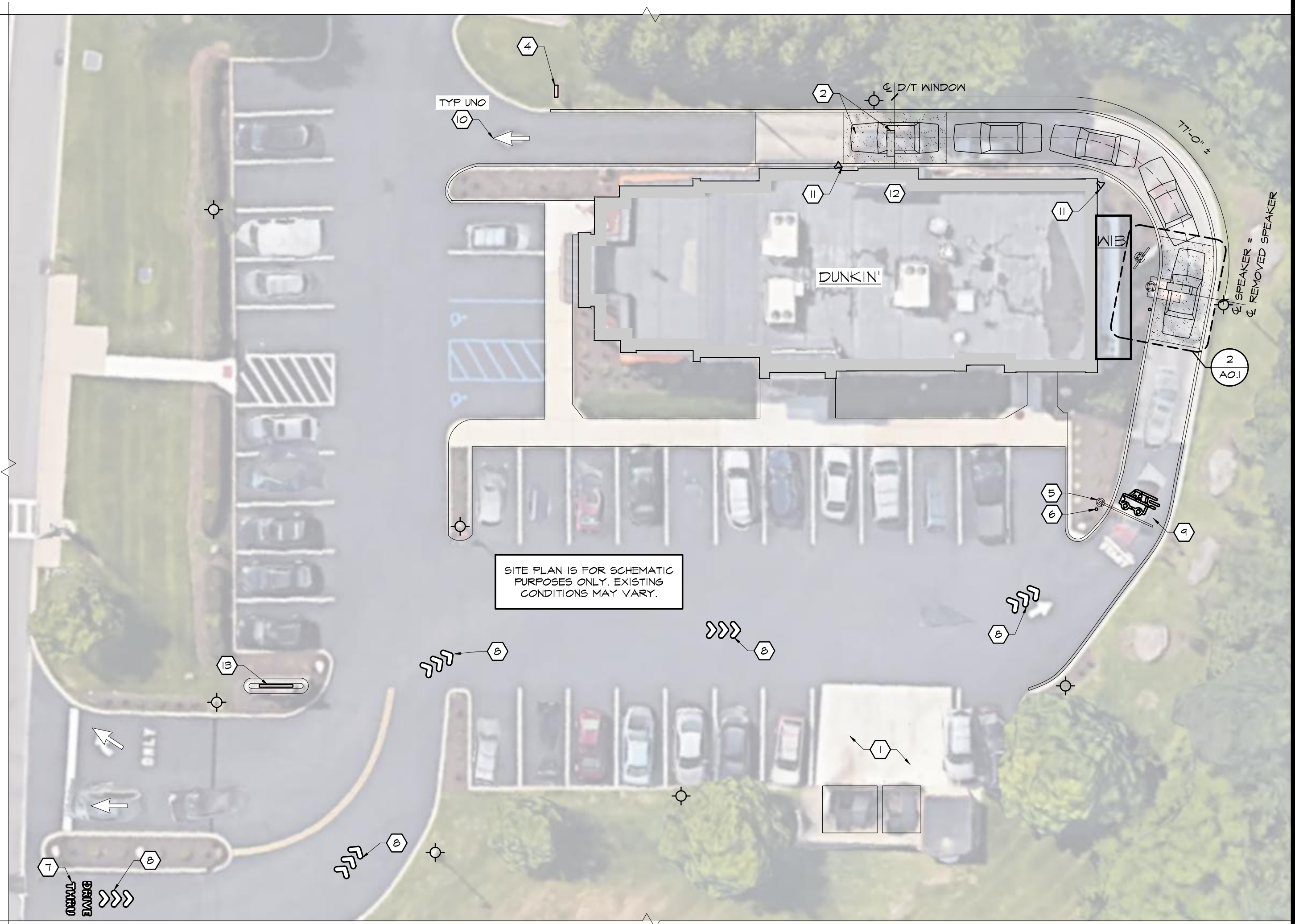
- SITE GRAPHIC & STRIPING NOTES**
- 1) PROPERLY PREP THE ASPHALT BEING PAINTED VIA PRESSURE WASH BEFORE PAINTING ALL DIRECTIONAL GRAPHICS.
  - 2) COORDINATE WITH FRANCHISEE ON FINAL LOCATIONS OF ALL GRAPHICS & DIRECTIONALS.
  - 3) SEE FINISH SCHEDULES FOR TRAFFIC STRIPING INFORMATION.
  - 4) PAINT TEMPLATE FOR SITE GRAPHIC AVAILABLE THROUGH PAVEMENT STENCIL COMPANY - SEE NATL. ACCOUNTS.



**5 TRAFFIC STRIPING DETAILS**  
SCALE: 1/4" = 1'-0"



**2 MENU BOARD LOCATION**  
SCALE: 1/4" = 1'-0"



**1 SCHEMATIC SITE PLAN**  
SCALE: 1/16" = 1'-0"