

Site Number:

NY6-255-FC

Site Name:

Wappingers Falls

Address:

1469 Route 9

Wappingers Falls, NY 12590-4969

United States

Recommendation Completed: 10-18-2024

Approved: 10-28-2024

Date Print: 09/24/2025

Leased/Owned: Leased



Recommendations Report

NaN

Asset Zone	Sign Number	Sign Type	Description	Action Code	
Exterior	Sign	EXT - 001	B1nx	5.5' Monument	Remove and Replace
Exterior	Sign	EXT - 002	Remove	Remove existing sign	Remove
Exterior	Sign	EXT - 002a	GWCS-2nx	8 3/4' Stacked Format - White Day/Color Night - Channel Letters	New
Exterior	Sign	EXT - 003	Remove	Remove existing sign	Remove
Exterior	Sign	EXT - 003a	GCCS-2nx	8 3/4' Stacked Format - Color Day/Color Night - Channel Letters	New
Exterior	Sign	EXT - 004	SS1nx	Canopy Mounted Regulatory - 'Clearance'	Remove and Replace
Exterior	Sign	EXT - 005	SS3nx	Canopy Mounted Regulatory - 'Drive-thru ATM'	Remove and Replace
Exterior	Sign	EXT - 006	SS1nx	Canopy Mounted Regulatory - 'Clearance'	Remove and Replace
Exterior	Sign	EXT - 007	SS3nx	Canopy Mounted Regulatory - 'Drive-thru ATM'	Remove and Replace
Exterior	Sign	EXT - 007a	Remove	Remove existing (2) electronic canopy signs	Remove
Exterior	Sign	EXT - 008	SS2nx	Canopy Mounted Regulatory - 'Do Not Enter'	Remove and Replace
Exterior	Sign	EXT - 009	SS2nx	Canopy Mounted Regulatory - 'Do Not Enter'	Remove and Replace
Exterior	Sign	EXT - 010	P1nx	3' Directional	Remove and Replace
Exterior	Sign	EXT - 011	Remove	Remove existing sign	Remove
Exterior	Sign	EXT - 012	Remove	Remove existing awning	Remove
Exterior	Sign	EXT - 013	Not in Scope	Not in Scope - Door Vinyl	Not In Scope
Exterior	Sign	EXT - 014	Z-DOT-3	Standard DOT 'Do Not Enter' sign	Remove and Replace

SignChart® and Recommendation Book Legal Disclaimer Certain information and content in SignChart® is developed under a Design Services Agreement between Maven and its clients. This original and unpublished design, including all concepts, (continued on next page) is proprietary to Maven and may not be reproduced, copied, or used beyond the specific project and client for which it was created without prior authorization. The information provided is for design intent only and serves as a guide for final sizes, appearances, and functions. It is not a substitute for engineered design. The Sign Vendor is solely responsible for all structural, electrical, mechanical, and foundation engineering, ensuring compliance with local, state, national, ADA, and other applicable codes. This content is not produced under an architectural services agreement. The Sign Vendor must conduct a technical audit of all site conditions to verify that signs can be permitted, approved by the landlord (if applicable), and properly installed in the intended location. Vendors must confirm all dimensions, fit, electrical servicing, mounting conditions, and regulatory compliance before fabrication. Prior to manufacturing any new sign, the Sign Vendor must ensure that the proposed sign aligns with the provided visual representation (photo morph or rendering). Sign types, descriptions, and dimensions in SignChart® serve as general guidelines for initial design approval, pricing, and planning. They are not final build sizes unless verified by the vendor. If an installed sign does not match the approved visual representation, the Sign Vendor is responsible for replacement at their cost. © 2025 Maven. All rights reserved.

MAVEN

Recommendations Report (continued)

NaN

Asset Zone	Sign Number	Sign Type	Description	Action Code	
Exterior	Sign	EXT - 015	Leave	Leave existing ADA Handicap Parking sign as is	Leave
Exterior	Sign	EXT - 016	Leave	Leave existing DOT sign as is	Leave
Exterior	Sign	EXT - 017	Leave	Leave existing ADA Handicap Parking sign as is	Leave
ATM	ATM	ATM1	Leave	Leave existing ATM as is	Leave
ATM	ATM	ATM2	Leave	Leave existing ATM as is	Leave
ATM	ATM	ATM3	Not in Scope	Not in Scope - ATM	Not In Scope

Existing Photo



Proposed Photo



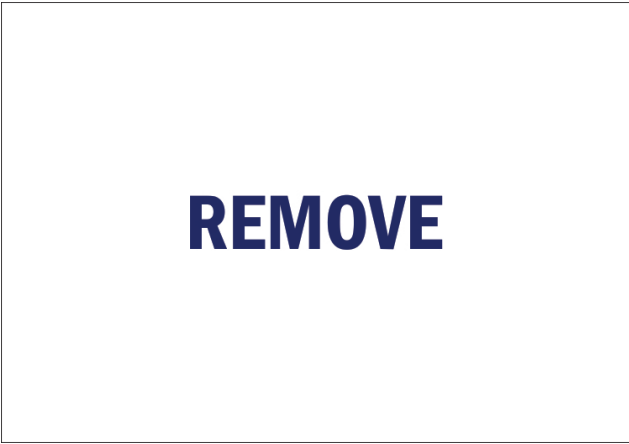
Existing	
Asset Zone:	Sign
Asset Type:	Exterior
Sign Number:	EXT - 001
Existing Sign Type:	Monument
Face Material:	
Graphics Material:	Vinyl
Overall Height:	5'-5"
Face Height:	3'-3"
Face Width:	6'-9"
Illuminated:	Illuminated
Electrical:	
Wall Material:	
Sign Comment:	Double sided

Proposed	
Asset Type:	Exterior
Sign Number:	EXT - 001
Sign Type:	B1nx
Description:	5.5' Monument
Action:	Remove and Replace
Comments:	
Restoration Notes:	Field verification is required for all ground signs to ensure that the recommended sign will fit in the recommended location, taking into account all set-backs, obstructions, underground utilities, etc. If a problem is detected by the field verification, an IFR should be submitted for modification by Maven prior to any manufacturing . Install new signage using existing primary electrical. Verify if additional circuits are required for new sign. Restore ground material to base of new sign.

Existing Photo



Proposed Photo



Existing	
Asset Zone:	Sign
Asset Type:	Exterior
Sign Number:	EXT - 002
Existing Sign Type:	Dimensional Letters
Face Material:	
Graphics Material:	Painted
Overall Height:	13'-3" est
Face Height:	3'-8" est
Face Width:	9' est
Illuminated:	Non Illuminated
Electrical:	
Wall Material:	
Sign Comment:	B: 12"

Proposed	
Asset Type:	Exterior
Sign Number:	EXT - 002
Sign Type:	Remove
Description:	Remove existing sign
Action:	Remove
Comments:	Channel letters with increased visibility recommended in EXT-002a, remove existing without replacing.
Restoration Notes:	Patch and repair existing wall surface to like new condition. Repaint to match existing color finish. For brick or stone walls fill holes with matching silicone.

Existing Photo



Proposed Photo



Existing	Proposed	
Asset Zone:	Sign	
Asset Type:	Exterior	
Sign Number:	EXT - 002a	
Existing Sign Type:	New	
Face Material:		
Graphics Material:		
Overall Height:		Overall Height: 3'-9 7/8"
Face Height:		Overall Width: 11'-4 7/8"
Face Width:		Logo Height:
Illuminated:		Letter Height: 8 3/4"
Electrical:		Illuminated: Illuminated
Wall Material:		
Sign Comment:		
	Asset Type:	Exterior
	Sign Number:	EXT - 002a
	Sign Type:	GWCS-2nx
	Description:	8 3/4" Stacked Format - White Day/Color Night - Channel Letters
	Action:	New
	Comments:	Recommend installing new set of channel letters as shown in proposed image to increase visibility and brand presence. See site plan for further clarification on location.
	Restoration	
	Notes:	New electrical work required. Field verify available circuits and access prior to fabrication. Field verify dimensions of the sign & surrounding space shown in the proposed image. If the field verification indicates that the sign will not fit, or may appear substantially different than the proportions shown in the proposed image, an IFR should be submitted for modification by Maven prior to any manufacturing.

Existing Photo



Proposed Photo



Existing	
Asset Zone:	Sign
Asset Type:	Exterior
Sign Number:	EXT - 003
Existing Sign Type:	Channel Letters
Face Material:	
Graphics Material:	Vinyl
Overall Height:	13'-7" est
Face Height:	2'-3" est
Face Width:	18' est
Illuminated:	Illuminated
Electrical:	
Wall Material:	
Sign Comment:	B: 18"

Proposed	
Asset Type:	Exterior
Sign Number:	EXT - 003
Sign Type:	Remove
Description:	Remove existing sign
Action:	Remove
Comments:	Channel letters with increased visibility recommended in EXT-003a, remove existing without replacing.
Restoration Notes:	Patch and repair existing wall surface to like new condition. Repaint to match existing color finish. For brick or stone walls fill holes with matching silicone. Remove, dispose and cap off to code all existing electrical components / hardware previously connected to existing signage.

Existing Photo



Proposed Photo



Existing

Asset Zone:	Sign
Asset Type:	Exterior
Sign Number:	EXT - 003a
Existing Sign Type:	New

Face Material:

Graphics Material:

Overall Height:

Face Height:

Face Width:

Illuminated:

Electrical:

Wall Material:

Sign Comment:

Proposed

Asset Type:	Exterior	Overall Height:	3'-9 7/8"
Sign Number:	EXT - 003a	Overall Width:	11'-4 7/8"
Sign Type:	GCCS-2nx	Logo Height:	
Description:	8 3/4" Stacked Format - Color Day/Color Night - Channel Letters	Letter Height:	8 3/4"
Action:	New	Illuminated:	Illuminated

Comments:

Comments: Recommend installing new set of channel letters as shown in proposed image to increase visibility and brand presence. See site plan for further clarification on location. Install sign at same height as GWCS-2nx recommended in EXT - 002a.

Restoration

Notes: New electrical work required. Field verify available circuits and access prior to fabrication. Field verify dimensions of the sign & surrounding space shown in the proposed image. If the field verification indicates that the sign will not fit, or may appear substantially different than the proportions shown in the proposed image, an IFR should be submitted for modification by Maven prior to any manufacturing.

Existing Photo



Proposed Photo

Clearance XXft. XXin.

Clearance XXft. XXin.

Sample Copy Only
Confirm Clearance Height

Existing	
Asset Zone:	Sign
Asset Type:	Exterior
Sign Number:	EXT - 004
Existing Sign Type:	Regulatory Sign
Face Material:	
Graphics Material:	Vinyl
Overall Height:	11'-1" est
Face Height:	8" est
Face Width:	4' est
Illuminated:	Non Illuminated
Electrical:	
Wall Material:	
Sign Comment:	Left clearance sign

Proposed	
Asset Type:	Exterior
Sign Number:	EXT - 004
Sign Type:	SS1nx
Description:	Canopy Mounted Regulatory - "Clearance"
Action:	Remove and Replace
Comments:	Install centered over left canopy lane. Electronic canopy sign recommended to be removed in EXT-007a. Ensure all canopy signage is installed at the same height.
Restoration	
Notes:	Patch and repair existing wall surface to like new condition. For brick or stone walls fill holes with matching silicone. Repaint to match existing color finish. Measure and verify clearance height prior to fabrication - deduct 2" from actual height for sign copy. Field verify dimensions of the sign & surrounding space shown in the proposed image. If the field verification indicates that the sign will not fit, an IFR should be submitted for modification by Maven prior to any manufacturing.

Overall Height:	7 3/4"
Overall Width:	4'-5 1/2"
Logo Height:	
Letter Height:	4"
Illuminated:	Non Illuminated

Existing Photo



Proposed Photo

Drive-thru ATM 



Existing

Asset Zone:	Sign
Asset Type:	Exterior
Sign Number:	EXT - 005
Existing Sign Type:	Regulatory Sign

Face Material:

Graphics	
Material:	Vinyl
Overall Height:	11'-1" est
Face Height:	8" est
Face Width:	4' est
Illuminated:	Non Illuminated

Electrical:

Wall Material:

Sign Comment: Left "Drive-up ATM" sign

Proposed

Asset Type:	Exterior	Overall Height:	7 3/4"
Sign Number:	EXT - 005	Overall Width:	4'-5 1/2"
Sign Type:	SS3nx	Logo Height:	
Description:	Canopy Mounted Regulatory - "Drive-thru ATM"	Letter Height:	4"
Action:	Remove and Replace	Illuminated:	Non
		Illuminated	

Comments: Install centered over middle canopy lane. Electronic canopy sign recommended to be removed in EXT-007a. Ensure all canopy signage is installed at the same height.

Restoration

Notes: Patch and repair existing wall surface to like new condition. For brick or stone walls fill holes with matching silicone. Repaint to match existing color finish. Verify copy w/ bank prior to fabrication Fabricator to verify if secondary copy is required on sign face (i.e. legal, towing, city ordinances or code information.) Field verify dimensions of the sign & surrounding space shown in the proposed image. If the field verification indicates that the sign will not fit, an IFR should be submitted for modification by Maven prior to any manufacturing.

Existing Photo



Proposed Photo

Clearance XXft. XXin.

Clearance XXft. XXin.

Sample Copy Only
Confirm Clearance Height

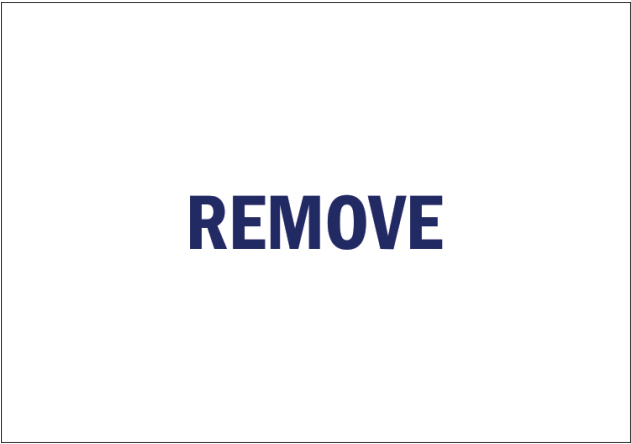
Existing	
Asset Zone:	Sign
Asset Type:	Exterior
Sign Number:	EXT - 006
Existing Sign Type:	Regulatory Sign
Face Material:	
Graphics Material:	Vinyl
Overall Height:	11'-1" est
Face Height:	8" est
Face Width:	4' est
Illuminated:	Non Illuminated
Electrical:	
Wall Material:	
Sign Comment:	Right clearance sign

Proposed	
Asset Type:	Exterior
Sign Number:	EXT - 006
Sign Type:	SS1nx
Description:	Canopy Mounted Regulatory - "Clearance"
Action:	Remove and Replace
Comments:	
Restoration	Install centered between both active ATM lanes. Ensure all canopy signage is installed at the same height.
Notes:	Patch and repair existing wall surface to like new condition. For brick or stone walls fill holes with matching silicone.
Repaint to match existing color finish. Measure and verify clearance height prior to fabrication - deduct 2" from actual height for sign copy. Field verify dimensions of the sign & surrounding space shown in the proposed image. If the field verification indicates that the sign will not fit, an IFR should be submitted for modification by Maven prior to any manufacturing.	

Existing Photo



Proposed Photo



Existing	
Asset Zone:	Sign
Asset Type:	Exterior
Sign Number:	EXT - 007a
Existing Sign Type:	Other
Face Material:	
Graphics Material:	
Overall Height:	
Face Height:	
Face Width:	
Illuminated:	
Electrical:	
Wall Material:	
Sign Comment:	

Proposed	
Asset Type:	Exterior
Sign Number:	EXT - 007a
Sign Type:	Remove
Description:	Remove existing (2) electronic canopy signs
Action:	Remove
Comments:	It is not preferred to have electronic canopy signs and they are to be removed where possible. Recommend removing canopy signs without replacement.
Restoration	
Notes:	Patch and repair existing wall surface to like new condition. Repaint to match existing color finish. For brick or stone walls fill holes with matching silicone. Remove, dispose and cap off to code all existing electrical components / hardware previously connected to existing signage.

Existing Photo



Proposed Photo



Existing

Asset Zone:	Sign
Asset Type:	Exterior
Sign Number:	EXT - 009
Existing Sign Type:	Regulatory Sign

Face Material:

Graphics	
Material:	Vinyl
Overall Height:	11'-1" est
Face Height:	8" est
Face Width:	4' est
Illuminated:	Non Illuminated

Electrical:

Wall Material:

Sign Comment: Right "Do Not Enter" sign

Proposed

Asset Type:	Exterior	Overall Height:	7 3/4"
Sign Number:	EXT - 009	Overall Width:	4'-5 1/2"
Sign Type:	SS2nx	Logo Height:	
Description:	Canopy Mounted Regulatory - "Do Not Enter"	Letter Height:	4"
Action:	Remove and Replace	Illuminated:	Non
Comments:	Ensure all canopy signage is installed at the same height.	Illuminated	

Restoration

Notes: Patch and repair existing wall surface to like new condition. For brick or stone walls fill holes with matching silicone. Repaint to match existing color finish. Verify copy w/ bank prior to fabrication Fabricator to verify if secondary copy is required on sign face (i.e. legal, towing, city ordinances or code information.) Field verify dimensions of the sign & surrounding space shown in the proposed image. If the field verification indicates that the sign will not fit, an IFR should be submitted for modification by Maven prior to any manufacturing.

Existing Photo



Proposed Photo



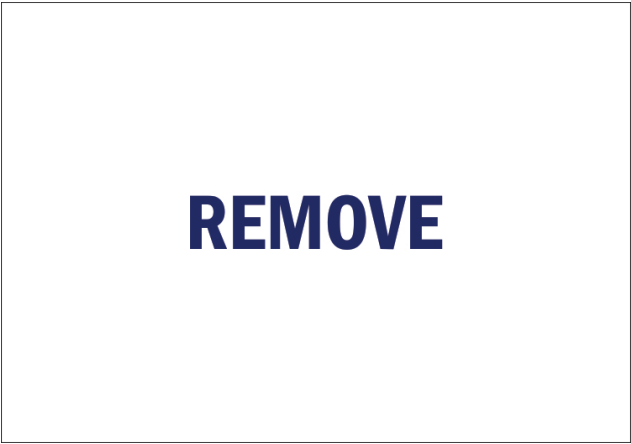
Existing	
Asset Zone:	Sign
Asset Type:	Exterior
Sign Number:	EXT - 010
Existing Sign Type:	Directional Sign
Face Material:	
Graphics Material:	Vinyl
Overall Height:	3'-6"
Face Height:	1'-3"
Face Width:	2'-6"
Illuminated:	Non Illuminated
Electrical:	
Wall Material:	
Sign Comment:	

Proposed	
Asset Type:	Exterior
Sign Number:	EXT - 010
Sign Type:	P1nx
Description:	3' Directional
Action:	Remove and Replace
Comments:	Match preferred copy as shown in proposed image. Recommend installing directional sign away from "Do Not Enter" DOT sign recommended to be replaced in EXT - 014 to ensure side B is visible. See site plan for further clarification on location.
Restoration	
Notes:	Field verification is required for all ground signs to ensure that the recommended sign will fit in the recommended location, taking into account all set-backs, obstructions, underground utilities, etc. If a problem is detected by the field verification, an IFR should be submitted for modification by Maven prior to any manufacturing. Restore ground material to base of new sign. Reference the Wayfinding Guide for standard approved copy heights, layouts, and specifications and be sure to match the visual appearance shown in the proposed image layout.

Existing Photo



Proposed Photo



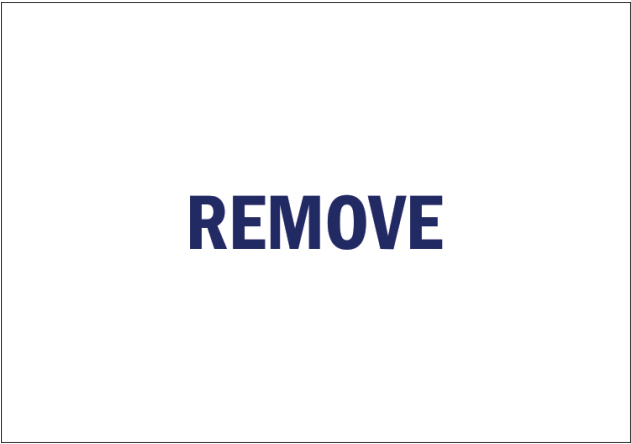
Existing	
Asset Zone:	Sign
Asset Type:	Exterior
Sign Number:	EXT - 011
Existing Sign Type:	Directional Sign
Face Material:	
Graphics Material:	Vinyl
Overall Height:	3'
Face Height:	1'-3"
Face Width:	2'-6"
Illuminated:	Non Illuminated
Electrical:	
Wall Material:	
Sign Comment:	

Proposed		
Asset Type:	Exterior	Overall Height:
Sign Number:	EXT - 011	Overall Width:
Sign Type:	Remove	Logo Height:
Description:	Remove existing sign	Letter Height:
Action:	Remove	Illuminated:
Comments:	Directional sign recommended in EXT-010 provides sufficient direction for customers, recommend removal of existing directional sign without replacement.	
Restoration		
Notes:	Remove support pole to grade and cap. Restore ground material and clean area of all Debris.	

Existing Photo



Proposed Photo



Existing	
Asset Zone:	Sign
Asset Type:	Exterior
Sign Number:	EXT - 012
Existing Sign Type:	Awning
Face Material:	
Graphics Material:	Other
Overall Height:	124" est
Face Height:	2'-11" est
Face Width:	120" est
Illuminated:	Non Illuminated
Electrical:	
Wall Material:	
Sign Comment:	Depth: 35"

Proposed	
Asset Type:	Exterior
Sign Number:	EXT - 012
Sign Type:	Remove
Description:	Remove existing awning
Action:	Remove
Comments:	Recommend removal of existing awning and frame without replacement. New steel frame rod canopy to be installed as part of exterior renovation project.
Restoration	
Notes:	Patch and repair existing wall surface to like new condition. For brick or stone walls fill holes with matching silicone.
Repaint to match existing color finish.	

Existing Photo



Proposed Photo



Existing	
Asset Zone:	Sign
Asset Type:	Exterior
Sign Number:	EXT - 013
Existing Sign Type:	Vinyls
Face Material:	
Graphics Material:	Vinyl
Overall Height:	6'-10"
Face Height:	5'-6"
Face Width:	3'
Illuminated:	Non Illuminated
Electrical:	
Wall Material:	
Sign Comment:	

Proposed		
Asset Type:	Exterior	Overall Height:
Sign Number:	EXT - 013	Overall Width:
Sign Type:	Not in Scope	Logo Height:
Description:	Not in Scope - Door Vinyl	Letter Height:
Action:	Not In Scope	Illuminated:
Comments:	Hours (including address numerals, card reader, security camera messages at doors) to be handled by the Bank Merchandising vendor outside of Signchart. Not in signage vendor scope.	
Restoration Notes:		

Existing Photo



Proposed Photo



Standard DOT sign

Existing	
Asset Zone:	Sign
Asset Type:	Exterior
Sign Number:	EXT - 014
Existing Sign Type:	Regulatory - DOT
Face Material:	
Graphics Material:	
Overall Height:	
Face Height:	
Face Width:	
Illuminated:	
Electrical:	
Wall Material:	
Sign Comment:	

Proposed	
Asset Type:	Exterior
Sign Number:	EXT - 014
Sign Type:	Z-DOT-3
Description:	Standard DOT "Do Not Enter" sign
Action:	Remove and Replace
Comments:	Recommend removal of existing and replacing with bank standard DOT "Do Not Enter" sign for increased safety on site. Ensure sign is installed away from directional sign recommended in EXT-010 for increased visibility.
Restoration	
Notes:	Field verification is required for all ground signs to ensure that the recommended sign will fit in the recommended location, taking into account all set-backs, obstructions, underground utilities, etc. If a problem is detected by the field verification, an IFR should be submitted for modification by Maven prior to any manufacturing. Remove and replace pole. Restore ground material to base of new sign. Verify copy w/ bank prior to fabrication. Fabricator to verify if secondary copy is required on sign face (i.e. legal, towing, city ordinances or code information.)

Existing Photo



Proposed Photo



Existing	
Asset Zone:	Sign
Asset Type:	Exterior
Sign Number:	EXT - 015
Existing Sign Type:	Regulatory - DOT
Face Material:	
Graphics Material:	
Overall Height:	
Face Height:	
Face Width:	
Illuminated:	
Electrical:	
Wall Material:	
Sign Comment:	Left ADA parking sign

Proposed	
Asset Type:	Exterior
Sign Number:	EXT - 015
Sign Type:	Leave
Description:	Leave existing ADA Handicap Parking sign as is
Action:	Leave
Comments:	Existing DOT sign is in good shape and maintains accessibility on site, leave as is.
Restoration Notes:	

Existing Photo



Existing	
Asset Zone:	Sign
Asset Type:	Exterior
Sign Number:	EXT - 016
Existing Sign Type:	Regulatory - DOT
Face Material:	
Graphics Material:	
Overall Height:	
Face Height:	
Face Width:	
Illuminated:	
Electrical:	
Wall Material:	
Sign Comment:	"No Parking" sign

Proposed Photo



Proposed	
Asset Type:	Exterior
Sign Number:	EXT - 016
Sign Type:	Leave
Description:	Leave existing DOT sign as is
Action:	Leave
Comments:	Existing DOT sign is in good shape and maintains safety on site, leave as is.
Restoration Notes:	

Existing Photo



Proposed Photo



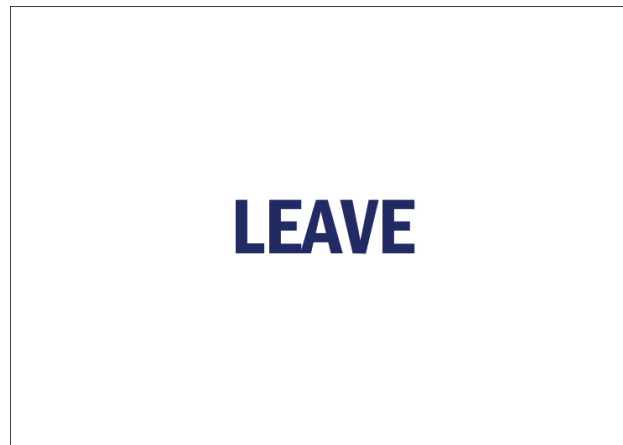
Existing	
Asset Zone:	Sign
Asset Type:	Exterior
Sign Number:	EXT - 017
Existing Sign Type:	Regulatory - DOT
Face Material:	
Graphics Material:	
Overall Height:	
Face Height:	
Face Width:	
Illuminated:	
Electrical:	
Wall Material:	
Sign Comment:	Right ADA parking sign

Proposed	
Asset Type:	Exterior
Sign Number:	EXT - 017
Sign Type:	Leave
Description:	Leave existing ADA Handicap Parking sign as is
Action:	Leave
Comments:	Existing DOT sign is in good shape and maintains accessibility on site, leave as is.
Restoration Notes:	

Existing Photo



Proposed Photo



Existing

Asset Type:	ATM
Asset Zone:	ATM
Sign Number:	ATM1
Terminal No.:	INYH2310
Maker:	Hyosung
Model Type:	
ATM Access:	Drive Up
Power Connection:	
ATM Environment:	Free Standing
Sign Comment:	

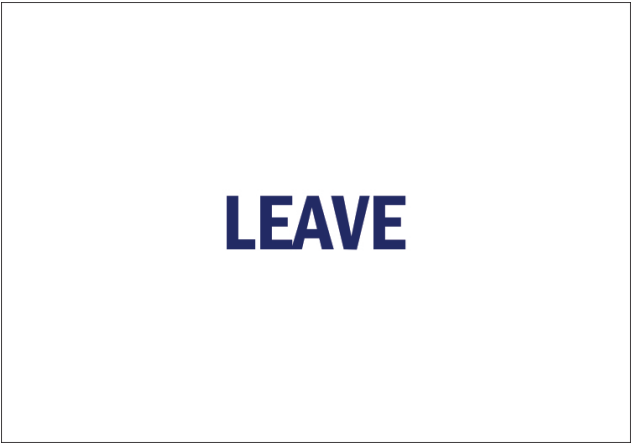
Proposed

Asset Type:	ATM
Sign Number:	ATM1
Sign Type:	Leave
Description:	Leave existing ATM as is
Action:	Leave
Comments:	Leave non branded ATM as is
Restoration Notes:	

Existing Photo



Proposed Photo



Existing	
Asset Type:	ATM
Asset Zone:	ATM
Sign Number:	ATM2
Terminal No.:	INYH2373
Maker:	Hyosung
Model Type:	
ATM Access:	Drive Up
Power Connection:	
ATM Environment:	Free Standing
Sign Comment:	

Proposed	
Asset Type:	ATM
Sign Number:	ATM2
Sign Type:	Leave
Description:	Leave existing ATM as is
Action:	Leave
Comments:	Leave non branded ATM as is
Restoration Notes:	

Existing Photo



Proposed Photo



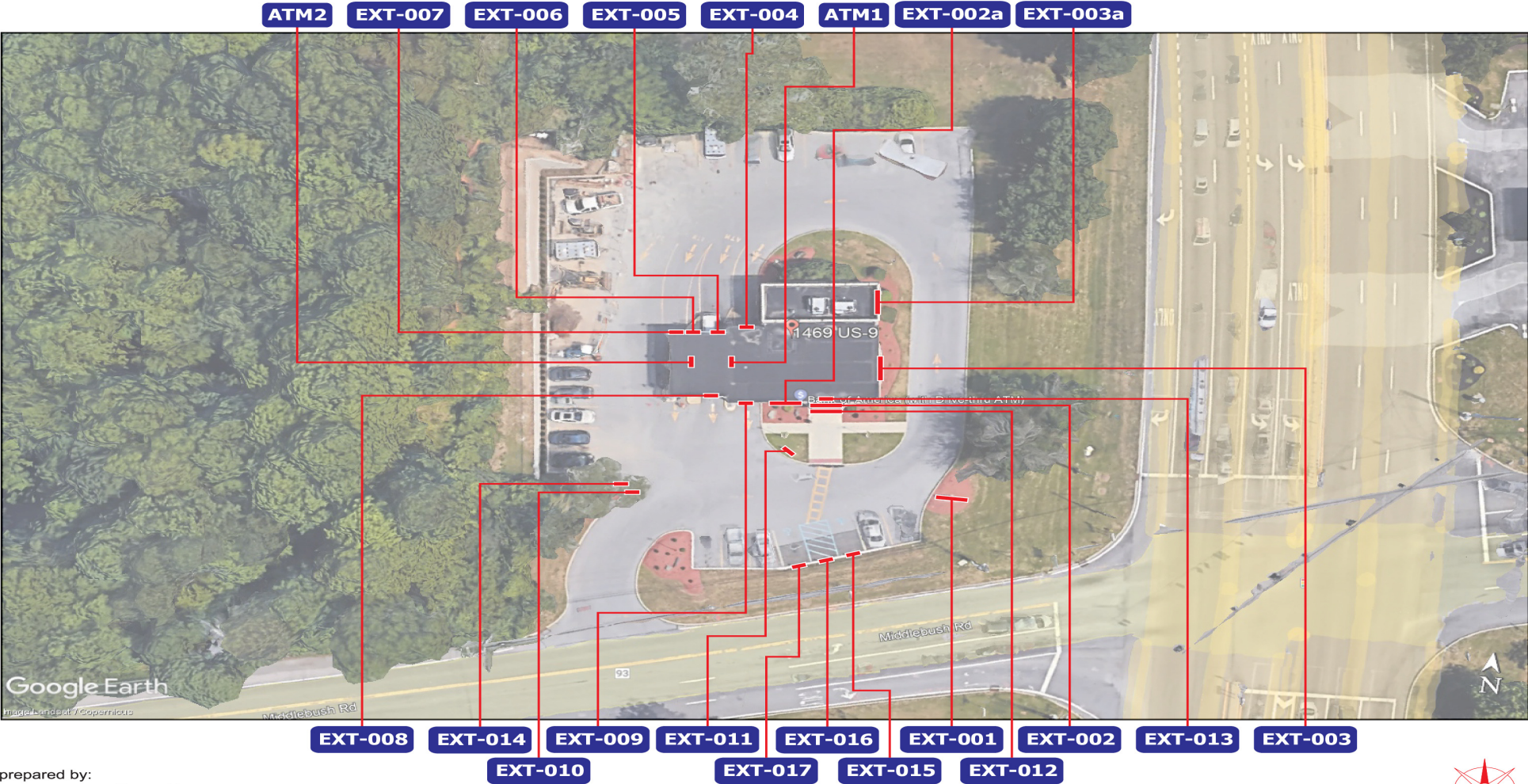
Existing	
Asset Type:	ATM
Asset Zone:	ATM
Sign Number:	ATM3
Terminal No.:	INYN1000
Maker:	NCR
Model Type:	
ATM Access:	Walk Up
Power Connection:	
ATM Environment:	Free Standing
Sign Comment:	BofA: 8" H x 23-1/2"W

Proposed	
Asset Type:	ATM
Sign Number:	ATM3
Sign Type:	Not in Scope
Description:	Not in Scope - ATM
Action:	Not In Scope
Comments:	ATM housing and surrounds will be updated as ATMs are refreshed, not in scope for ExtRen/BAU/FCI
Restoration Notes:	

Bank of America

NY6-255-FC

Wappingers Falls / 1469 Route 9 / Wappingers Falls, NY 12590



prepared by:

monigle

